



*Hanover* / 375

hanoveryachts.com / 2026



**This is no ordinary boat, it's a masterpiece of luxury and performance. With a bold, athletic design and a perfect fusion of style and function, it redefines life on the water.**

**Experience the open sea with elegance, state-of-the-art technology, and world-class amenities, where adventure meets sophistication.**

*Hanover* 375

# AFT & COCKPIT



*Hanover* 375

2025

# GALLEY, CABINS, & HEAD.



*Hanover* 375

2026

# BOW & STERN.



*Hanover* 375



# TECHNICAL SPECIFICATIONS



## LENGTH

Outboards: 39' 2" / 11.95 m  
Inboards: 37' 7" / 11.45 m



## BEAM

11' / 3.35 m



## DRAFT

34" / 0.8 m



## DRY WEIGHT

14,660 lbs / 6,650 kg



## FUEL TANK CAPACITY

170 gal / 630 L



## WATER TANK CAPACITY

50 gal / 190 L



## HOLDING TANK

20 gal / 75 L



## CAPACITY

15 day / 5 Night



## CRUISING SPEED

22-24 mph / 31.3 kph



## WIDE OPEN THROTTLE

43-45 mph / 69.2-72.4 kph



## DEADRISE

16°



## BRIDGE CLEARANCE

10' 2" / 3 m  
12' 2" / 3.7 m with radar  
or anchor light

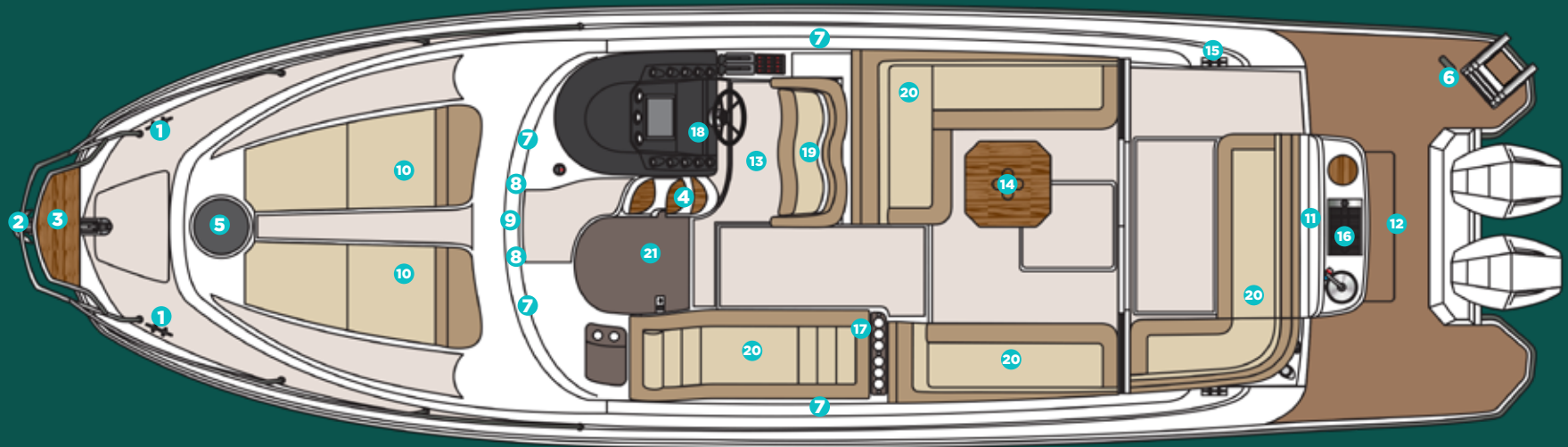


*Hanover 375*

2026

# HULL AND COCKPIT

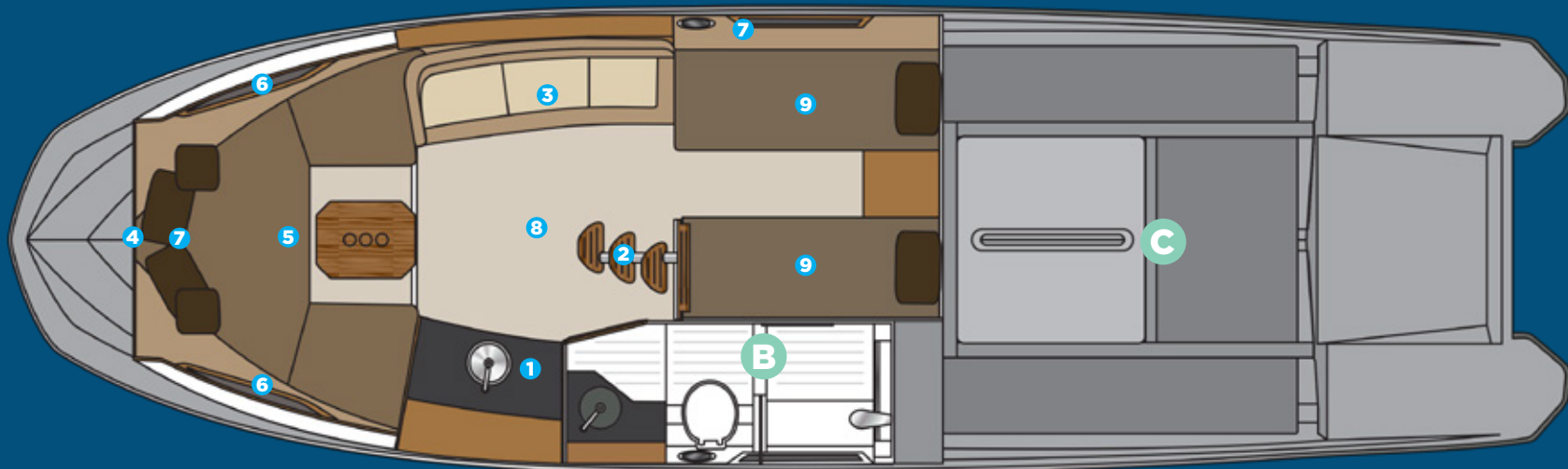
- 1** 8" through bolted stainless steel cleats (O6 count)
- 2** 1 bow eye
- 3** Stainless steel handrail with teak seat in the bow
- 4** Teak steps to the bow
- 5** 20" hatch in the bow from cabin to bow area
- 6** 4-step telescopic ladder on platform
- 7** 4 panoramic tempered glass windows
- 8** 2 tilting tempered glass windows in the cockpit
- 9** Tempered glass windshield and anodized aluminum framebow area
- 10** Double bow solarium with adjustable backrest
- 11** Handle stainless steel in the gourmet space
- 12** Compartment for fenders on the platform floor



- 13** 5 compartments below the cockpit seats
- 14** Teak table
- 15** Acrylic hatch
- 16** Gourmet space with top lid, sink and cutting board
- 17** Acrylic cup holder in the cockpit
- 18** Instrument panel that supports up to two 9" electronics with built-in compass
- 19** Dual rider seat with standing or sitting
- 20** Two seating areas in the cockpit and L-shaped sectional sofa in the stern
- 21** Acrylic access sliding door with lock and key

## A CABIN

- 1 Kitchen with sink, synthetic granite top, space for microwave, induction stove, fridge, 3 drawers and two cabinets
- 2 Stainless steel staircase with 3 wide teak steps
- 3 3 piece sofa
- 4 Decorative mirror on the bow
- 5 U-shaped sofa for 3 people convertibles into a double bed, with teak retractable table
- 6 Shelves in the bow bed
- 7 Luxury layette kit with 10 pillows
- 8 Free standing up of 6'3 in cabin center
- 9 2 x single beds convertible to a King size bed.



## B HEAD

- Electric toilet with 22 gallon waste box, macerator pump and external nozzle
- Cabinet with two doors, sink in synthetic granite with bowl overlaid in tempered glass
- Air cabinet with two mirrored doors
- Decorative coating with glass
- Shower box free standing height 6'0
- Tempered glass box
- Shower with mixer
- Non-slip floor

## C ENGINE

- Interior in gray gelcoat
- Non-slip sole, flat
- Insulation, acoustic and thermal
- Fire extinguisher
- Compartment, sealed, for air conditioning
- Compartment, sealed, for batteries
- Exhaust fans (2)
- Engine room hatch
- Access door with gas pistons and lock
- Fuel tank, aluminum, with level gauge

**CUSTOMIZE  
AND HAVE  
THE MOST  
UNIQUE  
VESSEL  
AT SEA.**



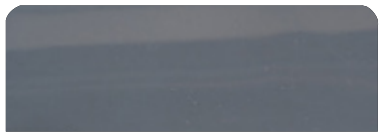
*Hanover* 375

2026

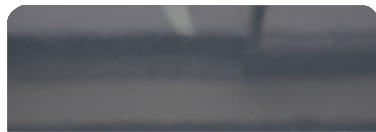


## EXTERIOR PAINT OPTIONS

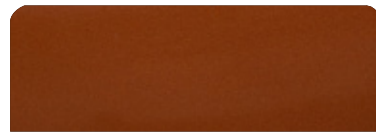
All options are available in either a high-gloss or matte finish.



Moonstone Gray



Pure Gray



Orange Pearl



Spring Blue



Orkney Gray



Ice Silver



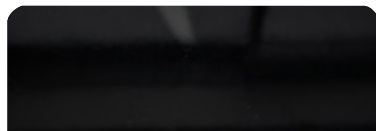
Moscou Red



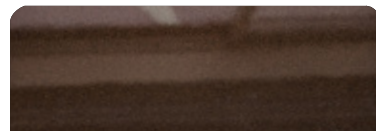
Heraldic Blue



Crayon Gray



Gales Black (Tuxedo)



Marrakesh Brown



Macaw Blue



## UPHOLSTERY OPTIONS



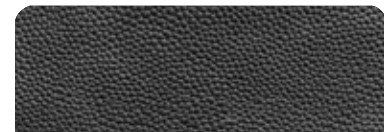
Fern



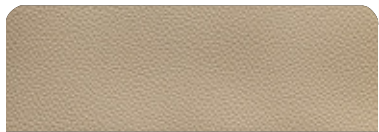
Terracota



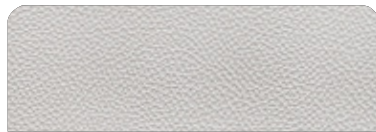
Caramello



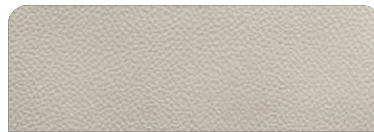
Black



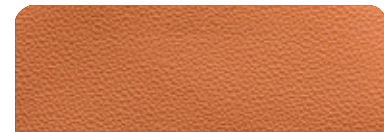
Land Rover



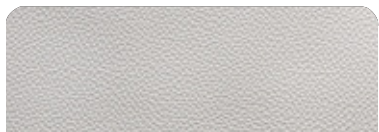
Taupe



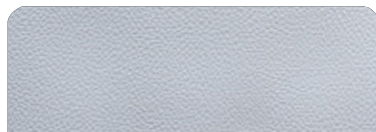
Ivory



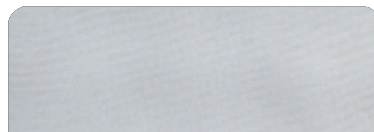
Orange



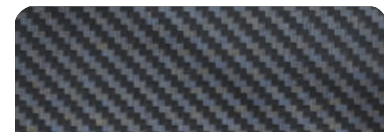
Off White



Gray



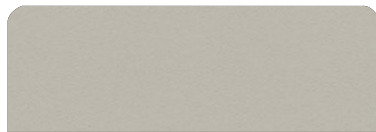
Silver



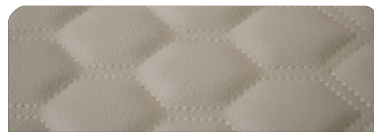
Carbon Fiber



White



Beige



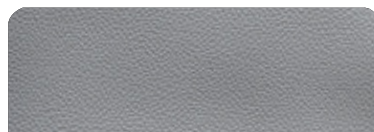
Matelasse Honeycomb



New Corolla



Blue



Corolla

*Hanover* 375

\*Additional options are available upon request.

2026



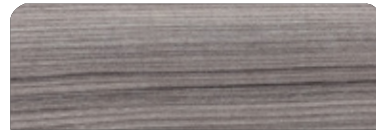
## FURNITURE VINYL OPTIONS



Salina



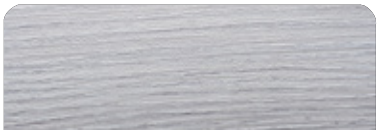
Massal



Cherry



Patina



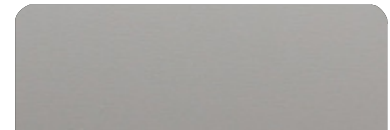
Alder



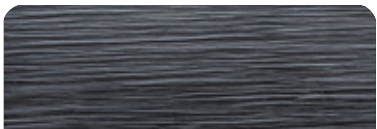
Bronze



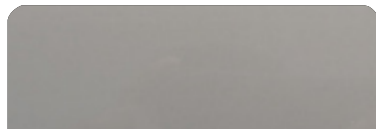
Freije



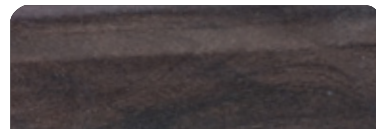
Taupe Super Matte



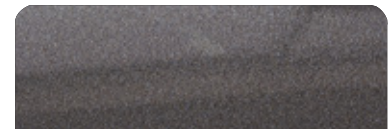
Black Line



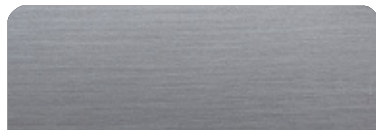
Taupe High Gloss



Canyon



Onix



Metallic



Gray Oak



## INTERIOR FLOORING OPTIONS



Alba



Almond



Pine



Amendola



Sand



Cement



Imbuia



Cumaru



Gray



Duna



Vintage

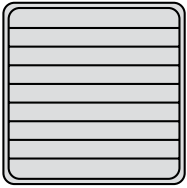


Kashmir

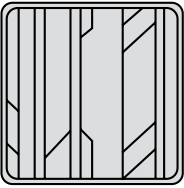


# DECK FLOORING OPTIONS

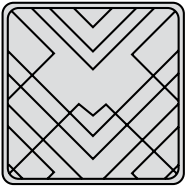
## PATTERNS



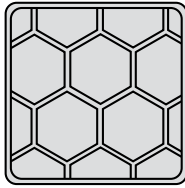
Classic



Aztec



Imperial



Beehive

EVA



Madeira



Gray



Ocher

SYNTHETIC  
TEAK



Madeira



Gray



Sand

# STANDARD EQUIPMENT

## HULL AND DECK

- Hardtop
- Cleats, 8" thru-bolted stainless steel
- Bow eye, two at stern
- Handrail, stainless steel with teak seat in the bow
- Floor, self-draining
- Hatch in the bow from cabin to bow area
- Windows, panoramic tempered glass
- Windows, tilting tempered glass, cockpit
- Windshield, tempered glass with anodized aluminum frame
- Ladder, 4-step telescopic, swim platform
- Sunbathing area, bow, with adjustable backrest
- Fender storage, platform sole
- Storage compartments below the cockpit seats
- Teak table
- Upholstery in anti-mold leather
- Gourmet cooking space with sink and refrigerator
- Storage, acrylic
- Cup holder, acrylic, cockpit
- Instrument panel with built-in compass, supports up to two 9" electronics
- Seat, dual passenger, standing or sitting
- Seating areas (2), cockpit
- Sofa, L-shaped sectional, stern

## HEAD

- Head, marine electric, with 22 gal holding tank and macerator
- Cabinet with doors
- Sink, synthetic granite & tempered glass
- Vanity with mirrored doors
- Shower with tempered glass stall
- Sole, non-slip

## CABIN

- Sofa, U-shaped, converts to double bed
- Teak table, retractable
- Access door, sliding, with lock
- Staircase, stainless steel, with wide teak steps
- Furniture, ultra moisture resistant
- Galley with sink, refrigerator, synthetic granite top, stove, drawers & cabinets
- Shelves, forward bed
- Mirror, decorative
- Coverings in waterproof fabric or anti-mold nautical leather
- Side walls covered with anti-mold foam and nautical leather
- Basic bedding kit with ten pillows

## ENGINE ROOM

- Interior in gray gelcoat
- Non-slip sole, flat
- Insulation, acoustic and thermal
- Fire extinguisher
- Compartment, sealed, for air conditioning and batteries
- Exhaust fans (2)
- Engine room hatch
- Access door with gas pistons and lock
- Fuel tank, aluminum, with level gauge

## PUMPS AND TANKS

- Water tank, potable, 50 gal
- Fresh water pump
- Bilge pumps, engine room, with automatic switches
- Bilge pump, amidships, with automatic switch
- Collection box for shower with pump
- Showerhead, aft, with mixer

## ELECTRICAL

- Circuit breaker board
- Selector switch for dock/generator/inverter
- Electrical panel, cockpit
- Lights, navigation
- Lights, anchoring
- Lighting, indirect LED, throughout
- Spotlights, LED, cabin and cockpit ceiling
- Lighting, engine room
- Outlets, 120V, in the cockpit, cabin and head
- Outlets, 12V / USB, dashboard and cabin
- Shore power connection
- Master switches, individual, for accessory batteries and engines
- Battery charging relay, automatic
- Emergency departure
- Batteries (2), engines
- Battery, generator

## OPTIONS INCLUDED

- Synthetic teak or EVA on bow, cockpit and swim platform
- Sound system
- Anchor Windlass Electric System
- Anchor, 22 lbs, with chain
- VHF Radio w/ Antenna
- Sunroof, electric opening
- Holding tank with macerator
- Air conditioning, 12,000 BTU
- Generator
- Refrigerator
- Trim tabs, electric
- Spotlights
- Shorepower
- Gourmet Area



# OUTBOARD & INBOARD OPTIONS

*Hanover* 375

MERCURY

2026

2026 HANOVER 375

# OUTBOARD

## ESSENTIAL PACKAGE

## PREMIUM PACKAGE

Engine	Twin Mercury® 300HP DTS V8	Twin Mercury® VERADO 300HP V8 w/ Joystick Piloting
GPS	GPS Raymarine® Element 7S (7")	GPS SIMRAD® Go9 (9")
Exterior Painting	1 Color (Hull)	2 Colors or More (Hull, Deck or HT)
A/C	12,000 BTU (Cabin)	12,000 + 6,000 BTU (Cabin - Cockpit)
Refrigerator	79L Refrigerator - 110V	Isotherm®/Dometic® Fridge 12V
VHF Radio	Uniden® VHF Radio w/ Antenna	SIMRAD® VHF Radio w/ Antenna
Power Generator	5KW	Kohler® 6KW
Sound System	Boss Sound Kit + 6 JBL Marine Speakers + Amplifier	Fusion® Marine Sound Kit + 6 Marine Speakers + Amplifier
Electric Trim Tabs (Flaps)	✓	✓
Headlights With Remote (Cruising Spotlight)	✓	✓
Electric Anchor Windlass System	✓	✓
Macerator Pump And Holding Tank	✓	✓
Shore Power System	✓	✓
Shore Power Cord 50A	✓	✓
Power Charger 100A	✓	✓
Heavy Duty Folding Table (Cockpit)	✓	✓
Galvanic Isolator (Electrical Protection)	✓	✓
Lines & Fenders	✓	✓
USCG Boating Safety Kit	✓	✓
Italian Steering Wheel	✓	✓
Design Items Set (Pillows, Bedding, Cushions, Towels, Accessories)	✓	✓
EVA Flooring (Cockpit, Platform, Bow)		✓
Windshield Wipers		✓
Hot Water System - Heater (Shower)		✓
Induction Electric Stove (Cabin)		✓
LED 24" TV Set And Mounting		✓
Upholstered Stools/Chairs On Stern (Kit Of 2 Banquets)		✓
Teak Table On Stern (Platform Extra Table)		✓
Microwave Oven		✓
Kenyon Electric Grill (Cockpit)		✓
LED Mirror Upgrade (Head)		✓

\$519,550

\$582,260

2026 HANOVER 375

INBOARD

ESSENTIAL  
PACKAGE

PREMIUM  
PACKAGE

Engine	Twin Mercury® Mercruiser Axis 300HP w/ Joystick Piloting	Twin Mercury® Mercruiser Axis 350HP w/ Joystick Piloting
GPS	GPS Raymarine® Element 7S (7")	GPS SIMRAD® Go9 (9")
Exterior Painting	1 Color (Hull)	2 Colors or More (Hull, Deck or HT)
A/C	12,000 BTU (Cabin)	12,000 + 6,000 BTU (Cabin - Cockpit)
Refrigerator	79L Refrigerator - 110V	Isotherm®/Dometic® Fridge 12V
VHF Radio	Uniden® VHF Radio w/ Antenna	SIMRAD® VHF Radio w/ Antenna
Power Generator	5KW	Kohler® 6KW
Sound System	Boss Sound Kit + 6 JBL Marine Speakers + Amplifier	Fusion® Marine Sound Kit + 6 Marine Speakers + Amplifier
Electric Trim Tabs (Flaps)	✓	✓
Headlights With Remote (Cruising Spotlight)	✓	✓
Electric Anchor Windlass System	✓	✓
Macerator Pump And Holding Tank	✓	✓
Shore Power System	✓	✓
Shore Power Cord 50A	✓	✓
Power Charger 100A	✓	✓
Heavy Duty Folding Table (Cockpit)	✓	✓
Galvanic Isolator (Electrical Protection)	✓	✓
Lines & Fenders	✓	✓
USCG Boating Safety Kit	✓	✓
Italian Steering Wheel	✓	✓
Design Items Set (Pillows, Bedding, Cushions, Towels, Accessories)	✓	✓
EVA Flooring (Cockpit, Platform, Bow)		✓
Windshield Wipers		✓
Hot Water System - Heater (Shower)		✓
Induction Electric Stove (Cabin)		✓
LED 24" TV Set And Mounting		✓
Upholstered Stools/Chairs On Stern (Kit Of 2 Banquets)		✓
Teak Table On Stern (Platform Extra Table)		✓
Microwave Oven		✓
Kenyon Electric Grill (Cockpit)		✓
LED Mirror Upgrade (Head)		✓

\$534,550

\$587,260

A white motorboat is on a lake. Two women are on the boat; one is sitting on a pedestal. A water slide is being towed behind the boat, with a man and a child on it. The scene is set during sunset or sunrise, with warm lighting on the water.

# BUILD YOUR BOAT.

Choose Upgrades  
Tailored to Your Lifestyle.

*Hanover* 375

2026

## BUILD YOUR BOAT BY SELECTING ITEMS FROM THE LIST BELOW



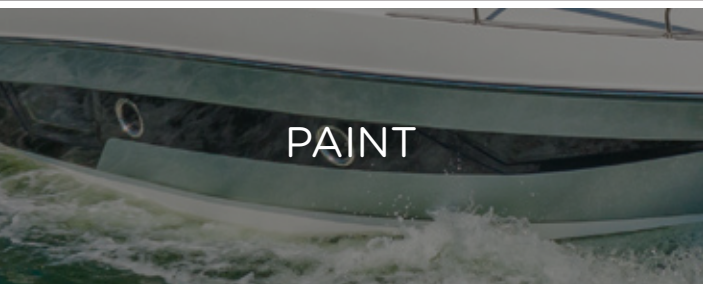
### ENGINES

#### INBOARD

MERCURY TWIN MERCUISER AXIUS 300HP W/ JOYSTICK PILOTING  
MERCURY TWIN MERCUISER AXIUS 350HP W/ JOYSTICK PILOTING  
MERCURY TWIN MERCUISER AXIUS 380HP W/ JOYSTICK PILOTING  
MERCURY TWIN MERCUISER AXIUS 320HP - DIESEL W/ JOYSTICK PILOTING  
MERCURY TWIN MERCUISER AXIUS 350HP - DIESEL W/ JOYSTICK PILOTING  
VOLVO TWIN D4 320HP DIESEL  
VOLVO TWIN D6 380HP DIESEL

#### OUTBOARD

MERCURY TWIN VERADO 300HP V8 OUTBOARDS W/ JOYSTICK PILOTING  
MERCURY TWIN VERADO 350HP V10 OUTBOARDS W/ JOYSTICK PILOTING  
MERCURY TWIN VERADO 400HP V10 OUTBOARDS W/ JOYSTICK PILOTING



### PAINT

EXTERNAL SINGLE PAINTING (1 COLOR, HULL)  
EXTERNAL DOUBLE PAINTING (2 OR MORE COLORS, HULL, DECK OR HT)  
EXTERNAL COMPLETE SPECIAL PAINT AND OR SPECIAL COLOR SELECTION  
BOTTOM PAINT - ANTIFOUL COPPERCOAT PAINT



### NAVIGATION

ELECTRIC TRIM TABS (FLAPS)  
HUMPHREE AUTOMATIC TRIM TABS  
ZIP WAKE AUTOMATIC TRIM TABS  
HEAD LIGHTS WITH REMOTE (CRUISING SPOTLIGHT)  
BOW THRUSTERS  
MC<sup>2</sup> QUICK GYRO STABILIZERS (X10)  
FLIR NIGHT VISION  
ITALIAN STEERING WHEEL



## FLOORING

- EVA FLOORING (COCKPIT, PLATFORM, BOW)
- SYNTHETIC TEAK FLOORING (COCKPIT, PLATFORM, BOW)
- REAL TEAK FLOORING (COCKPIT, PLATFORM, BOW)



## AUDIO

- BOSS SOUND KIT + 6 JBL MARINE SPEAKERS + AMPLIFIER
- FUSION MARINE SOUND SYSTEM KIT + 6 MARINE SPEAKERS + AMPLIFIER
- JBL MARINE SUBWOOFER
- JBL MARINE AMPLIFIER (EXTRA) (2 CHANNELS)
- FUSION MARINE AMPLIFIER (EXTRA) (2 CHANNELS)
- JBL MARINE SPEAKERS (EXTRA PAIR)
- JL AUDIO KIT 1 - MEDIA MASTER + 6 SPEAKERS + AMP
- JL AUDIO KIT 2 - MEDIA MASTER + 8 SPEAKERS + AMP + SUBWOOFER



## ELECTRONICS

- GPS RAYMARINE ELEMENT 7S (7")
- GPS RAYMARINE AXIOM 9"
- GPS RAYMARINE AXIOM 12"
- GPS SIMRAD Go7 (7")
- GPS SIMRAD Go9 (9")
- GPS SIMRAD NSS 10" EVO4 (10")
- GPS SIMRAD NSS12 (12")
- GPS SIMRAD NSX15 ULTRAWIDE (15")
- GPS SIMRAD NSS16 (16")
- GPS GARMIN 9"
- GPS GARMIN 12"
- MERCURY VESSEL VIEW 4"
- MERCURY VESSEL VIEW 7"
- MERCURY VESSEL VIEW 9"
- SIMRAD RADAR HALO20+
- RAYMARINE RADAR QUANTUM II
- GARMIN RADAR
- UNIDEN VHF RADIO W/ ANTENNA
- SIMRAD VHF RADIO W/ ANTENNA



## GENERATOR

KOHLER 6KW POWER GENERATOR  
KOHLER 9KW POWER GENERATOR  
KOHLER 11KW POWER GENERATOR



## COVERS

SET OF WEATHERIZED EXTERIOR SEAT COVERS  
SNAP-ON CANVAS COVER  
EISENGLASS ENCLOSURE




## AIR CONDITIONING

A/C SYSTEM - 6,000 BTU (COCKPIT)  
A/C SYSTEM - 9,000 BTU (COCKPIT)  
A/C SYSTEM - 12,000 BTU (CABIN)  
A/C SYSTEM - 16,000 BTU (CABIN)



## UTILITIES

ELECTRIC ANCHOR WINDLASS SYSTEM - 1000W + 10KG ANCHOR AND 40M CHAIN (35+)  
WINDSHIELD WIPERS  
MACERATOR PUMP AND HOLDING TANK  
HOT WATER SYSTEM - HEATER (SHOWER)  
SHORE POWER SYSTEM  
SHORE POWER CORD 50A  
POWER CHARGER 100A  
POWER CHARGER/INVERTER 1800W  
POWER CHARGER/INVERTER 3000W  
INDUCTION ELECTRIC STOVE (CABIN)  
MICROWAVE OVEN  
79L REFRIGERATOR - 110V  
ISOTHERM 65L FRIDGE 12V  
REFRIGERATED 12V DRAWER (COCKPIT)  
ISOTHERM ICE MAKER  
KENYON ELECTRIC GRILL (STERN)  
LED 24" TV SET AND MOUNTING  
USCG BOATING SAFETY KIT  
LINES & FENDERS



## COMFORT & DESIGN

- WOODEN STOOLS/CHAIRS ON STERN (KIT OF 2 BANQUETS)
- UPHOLSTERED STOOLS/CHAIRS ON STERN (KIT OF 2 BANQUETS)
- TEAK TABLE ON STERN (PLATFORM EXTRA TABLE)
- HEAVY DUTY FOLDING TABLE (COCKPIT)
- BOW TENT (BIMINI TOP ON BOW)
- HYDRAULIC UNDERWATER SWIM PLATFORM (**INBOARDS ONLY**)
- CERAMIC MARBLE DECORATIVE WALL (HEAD)
- MID SHIP CABIN ROOM ENCLOSURE (WOOD/DOOR)
- MAIN CABIN ROOM ENCLOSURE (WOOD/DOOR)
- MANUAL AFT SHADE (STOBAG)
- ELECTRIC AFT SHADE (STOBAG)
- ITALIAN PREMIUM UPHOLSTERY
- LEATHER COVER PANEL (COMPLETE DASHBOARD & HELM)
- ADJUSTABLE SINGLE SEAT - MANUAL
- ADJUSTABLE SINGLE SEAT - ELECTRIC
- LED MIRROR UPGRADE (BATHROOM)
- BLACK EXTERIOR RAILING
- DESIGN ITEMS SET (PILLOWS, BEDDING, CUSHIONS, TOWELS, ACCESSORIES)



## ADDITIONAL UPGRADES

- UNDERWATER LIGHTS (PAIR)
- RGB CHANGING LIGHTS (COCKPIT)
- GALVANIC ISOLATOR (ELECTRICAL PROTECTION)
- FIREBOY - ADVANCED FIRE SUPPRESSION SYSTEM
- LIVWELL (COCKPIT)
- ADJ ENGINE PROTECTION RAILING W/ ROD HOLDERS
- ADJ ENGINE PROTECTION RAILING
- PPF (PAINT PROTECTION FILM)
- YACHT CONTROLLER
- STARLINK
- ADDTL USB / ELECTRICAL OUTLETS
- REMOVABLE LADDER (BEACH CLUB)



For Pricing and more Options  
**Contact us now:**



[www.hanoveryachts.com](http://www.hanoveryachts.com)



[sales@hanoveryachts.com](mailto:sales@hanoveryachts.com)

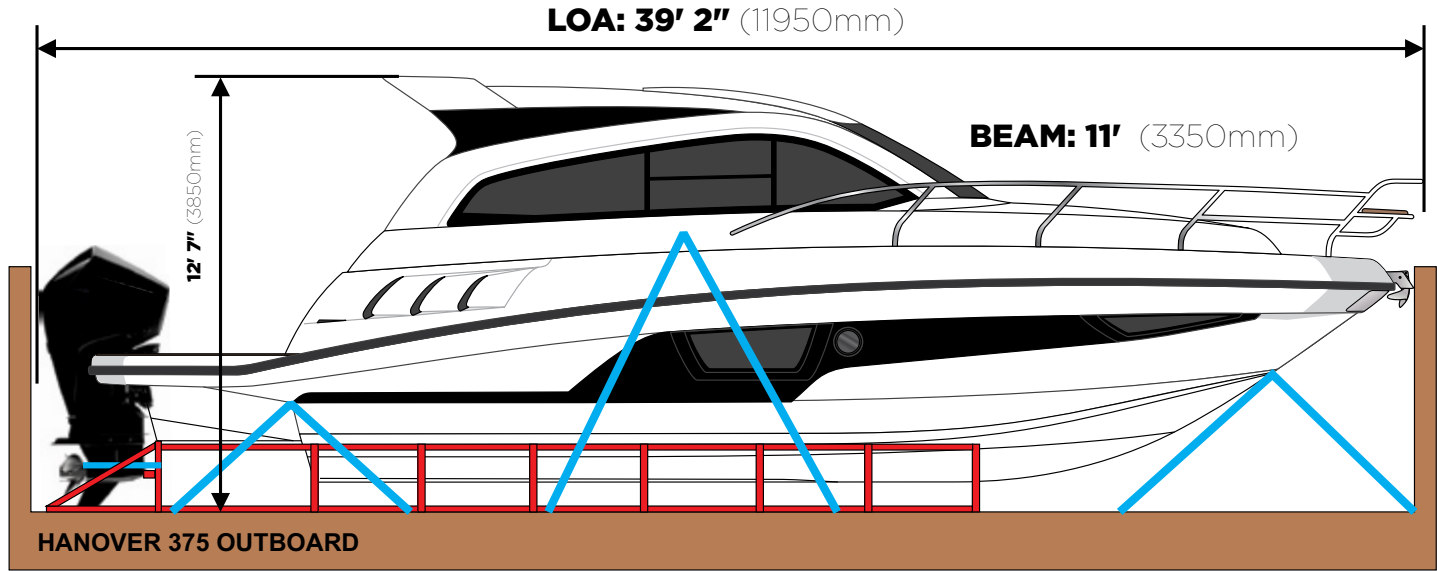
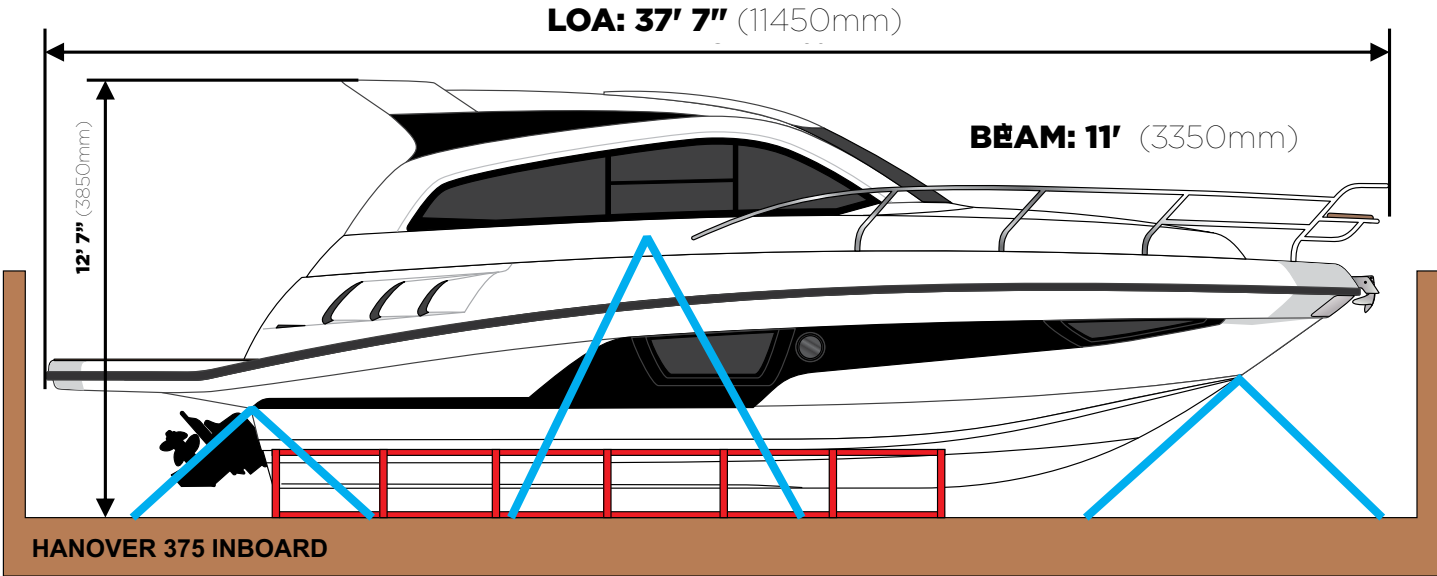


+1 954-355-9204



+1 (305) 452-0002

# SHIPPING DIMENSIONS



# HANOVER OWNERSHIP PROGRAM

---

At Hanover, we ensure an exciting stress-free experience from the moment you discover our brand.

## **STRESS-FREE PRICING**

Our entire lineup comes at our lowest price - no haggling needed. Leave the negotiations to used car salesmen, and enjoy a straightforward buying experience with us.

## **FIRST TRIP**

We've got you covered! You'll receive thorough training, and a captain will accompany you until you feel fully confident at the helm. Enjoy the experience like a pro!

## **MAINTENANCE AND WARRANTY**

Every Hanover vessel includes a 5-Year Premier Level Hull Warranty, 1 Year General, Mechanical and Components Warranty, All Accessories & Electrical Parts Under The Original Manufacturer's Warranty.

Cruise with complete confidence knowing you have a team of dedicated professionals at your service.

**Don't just own a boat, be part of the Hanover Lifestyle.**

*Hanover*

*Hanover*

[www.hanoveryachts.com](http://www.hanoveryachts.com)