



Hanover / 347

hanoveryachts.com / 2026



Experience a unique design and functionality with the Hanover 347. Our innovative approach ensures optimal space utilization for its

category, delivering intuitive features designed to enhance performance while prioritizing your comfort. Time to exceed expectations.

Hanover 347

AFT & COCKPIT



Hanover 347



2025

GALLEY, CABINS, & HEAD.



Hanover 347



BOW & STERN.



TECHNICAL SPECIFICATIONS



LENGTH

Outboards: 35' 3" / 10.75 m
Inboards: 34' 1" / 10.40 m



BEAM

9' 10" / 3 m



DRAFT

33" / 0.8m



DRY WEIGHT

12,500 lbs / 5,670 kg



FUEL TANK CAPACITY

185 gal / 700 L



WATER TANK CAPACITY

52 gal / 200 L



HOLDING TANK

20 gal / 75 L



CAPACITY

14 day / 4 Night



CRUISING SPEED

22-24 mph / 31.3 kph
Range: 22 mph - 11 gal/h



WIDE OPEN THROTTLE

43-45 mph / 69.2-72.4 kph
Range: 45 mph - 63 gal/h



DEADRISE

16°



BRIDGE CLEARANCE

9' 5" / 2.9 m

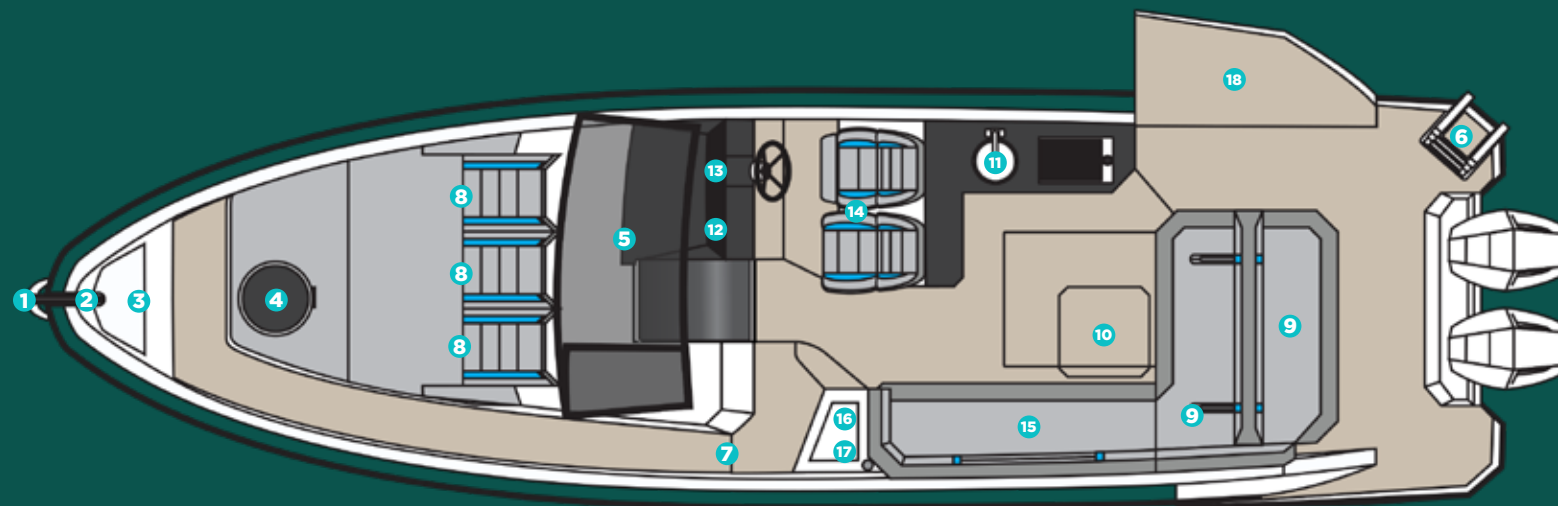
Hanover 347

2026



HULL AND COCKPIT

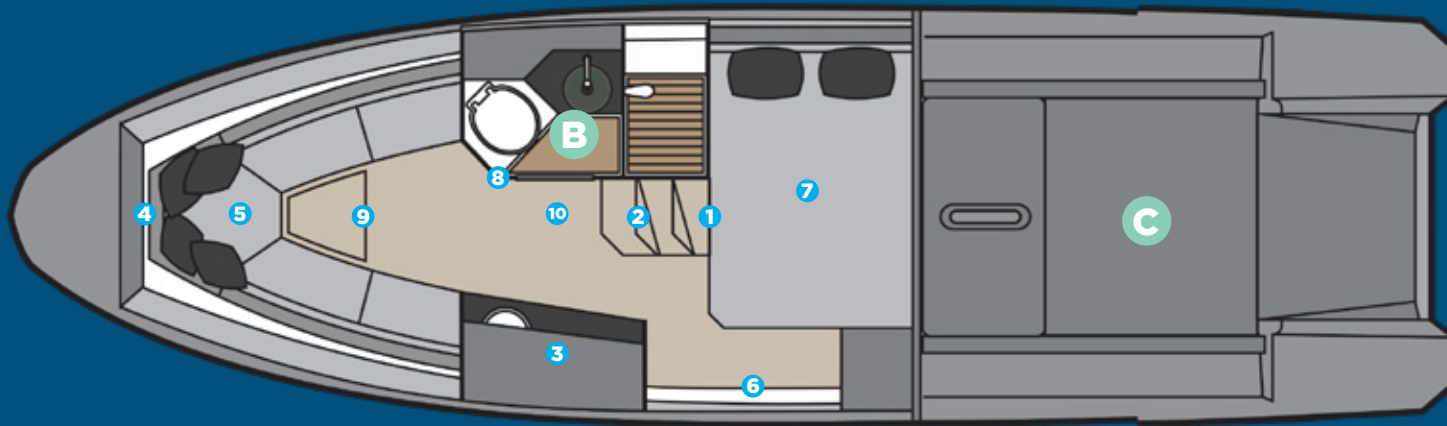
- 1** 1 Bow Eye
- 2** High Stainless Steel Pulpit with Teak Seat at the Bow
- 3** Anchor Bracket + Stainless Steel Protection Plate
- 4** 1 Cabin Hatch (20")
- 5** Tempered Glass Windshield with Anodized Aluminum Frame
- 6** 4-Step Telescopic Swim Ladder on the Swim Platform
- 7** Side Deck Access to the Bow
- 8** Triple Bow Lounge with Adjustable Backrest and Cup Holders
- 9** 5 Storage Compartments Under the Cockpit Seats



- 10** Teak Table
- 11** Side Galley with Top Lid, Sink, and Space for a Grill
- 12** Acrylic Chart Holder on the Dash
- 13** Dashboard Designed for Up to Two 9" Electronics with Built-in Compass
- 14** Double Helm Seat with Leg Support for Standing or Seated Steering
- 15** Portside L-Shaped Sofa with Integrated Foldable Stern Sun Pad
- 16** Side Cooler
- 17** Trash Bin
- 18** Electric Side Deck Hatch

A CABIN

- 1 Acrylic Cabin Door with Lock and Key
- 2 Wide 3-Step Teak Staircase with Handrail
- 3 Galley with Sink, Synthetic Granite Countertop, Space for Microwave, Induction Cooktop, and Storage Cabinet
- 4 Decorative Mirror at the Bow
- 5 U-Shaped Sofa for 3, Convertible into a Double Bed with Retractable Teak Table
- 6 Midship Side Sofa
- 7 Midship Double Berth
- 8 Sidewalls Covered with Foam and Marine-Grade Anti-Mildew Vinyl
- 9 Vinyl Flooring
- 10 6'3" (1.90m) Headroom at the Entrance



B HEAD

- Electric Marine Toilet with 80L Holding Tank, Macerator Pump, and External Discharge Fitting
- Vanity Cabinet with Single Door, Synthetic Granite Countertop, and Above-Counter Basin in Tempered Glass or Ceramic
- Overhead Storage Cabinet with Mirrored Door
- Decorative Wall Paneling
- Shower with Mixer Faucet
- Tempered Glass Enclosed Shower
- 6'2" (1.88m) Headroom
- Non-Slip Flooring

C ENGINE

- Interior Finished in Gray Gelcoat
- Flat Non-Slip Flooring
- Acoustic and Thermal Insulation
- Dedicated Battery Compartment
- 2 Exhaust Fans
- Quick-Access Hatch with Gas Struts and Locking Latch
- Aluminum Fuel Tank with Level Gauge and Carbon Canister

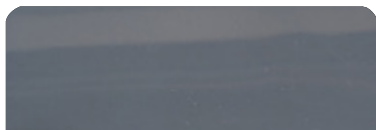


**CUSTOMIZE
AND HAVE
THE MOST
UNIQUE
VESSEL
AT SEA.**

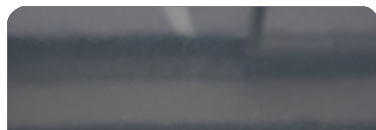


EXTERIOR PAINT OPTIONS

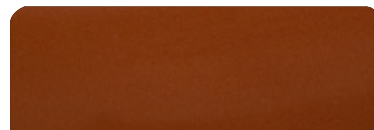
All options are available in either a high-gloss or matte finish.



Moonstone Gray



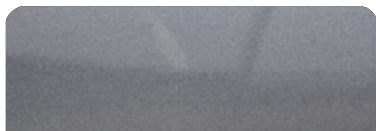
Pure Gray



Orange Pearl



Spring Blue



Orkney Gray



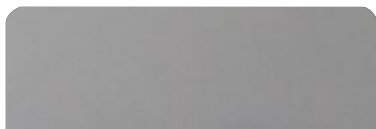
Ice Silver



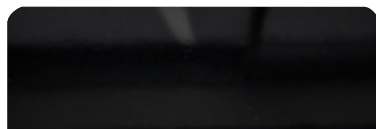
Moscou Red



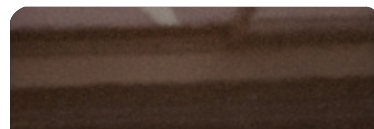
Heraldic Blue



Crayon Gray



Gales Black (Tuxedo)



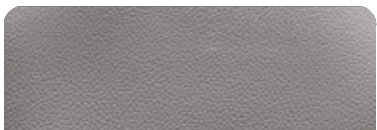
Marrakesh Brown



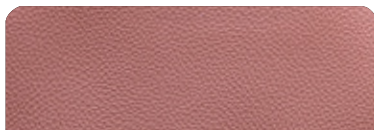
Macaw Blue



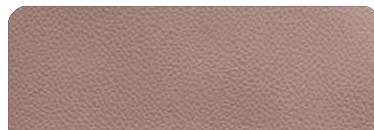
UPHOLSTERY OPTIONS



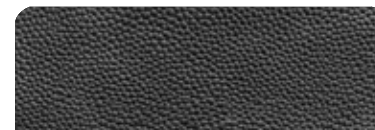
Fern



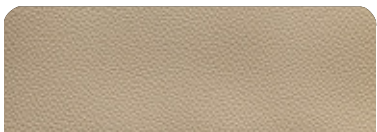
Terracota



Caramello



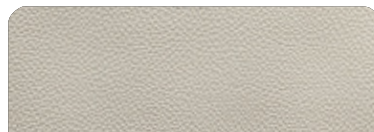
Black



Land Rover



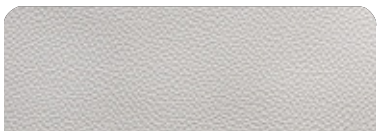
Taupe



Ivory



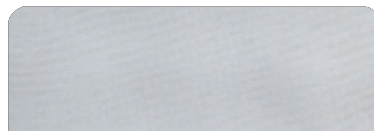
Orange



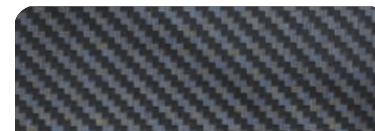
Off White



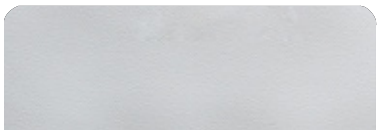
Gray



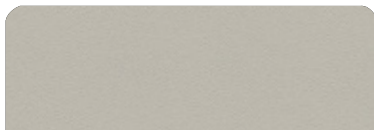
Silver



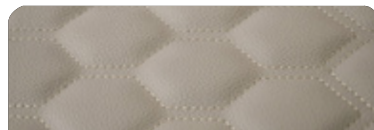
Carbon Fiber



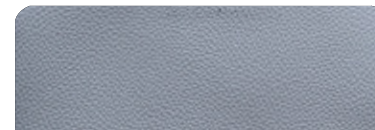
White



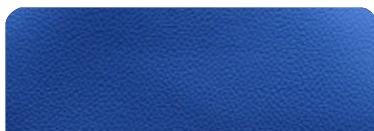
Beige



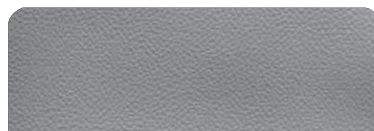
Matelasse Honeycomb



New Corolla



Blue



Corolla

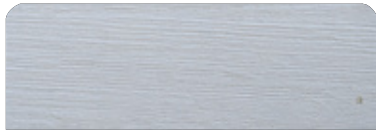
Hanover 347

*Additional options are available upon request.

2026



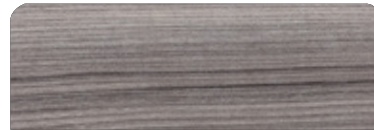
FURNITURE VINYL OPTIONS



Salina



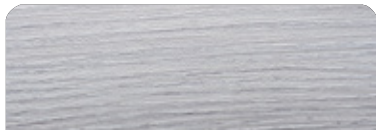
Massal



Cherry



Patina



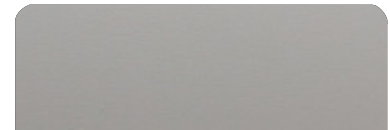
Alder



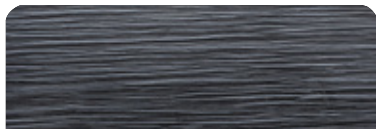
Bronze



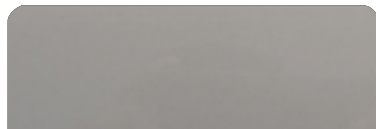
Freije



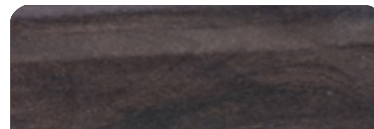
Taupe Super Matte



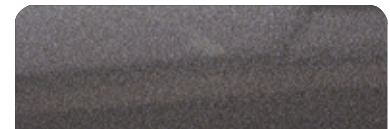
Black Line



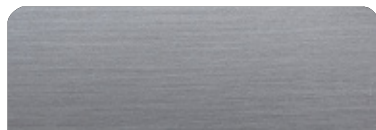
Taupe High Gloss



Canyon



Onix



Metallic



Gray Oak



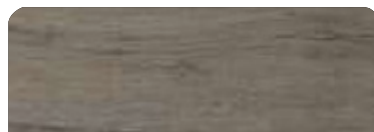
INTERIOR FLOORING OPTIONS



Alba



Almond



Pine



Amendola



Sand



Cement



Imbuia



Cumaru



Gray



Duna



Vintage

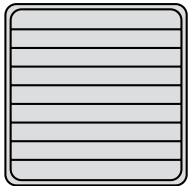


Kashmir

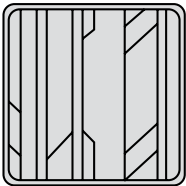


DECK FLOORING OPTIONS

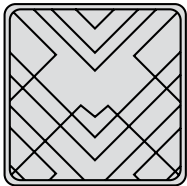
PATTERNS



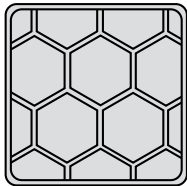
Classic



Aztec



Imperial



Beehive

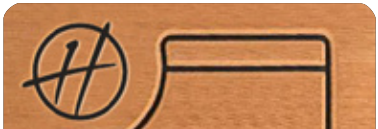
EVA



Madeira

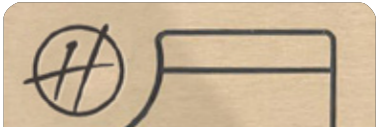


Gray



Ocher

SYNTHETIC
TEAK



Madeira



Gray



Sand

STANDARD EQUIPMENT

HULL AND DECK

- 6 Stainless Steel Mooring Cleats (8")
- 1 Bow Eye
- 2 Stern Eyes
- High Stainless Steel Pulpit with Teak Seat at the Bow
- Anchor Bracket + Stainless Steel Protection Plate
- Stainless Steel Deck Fittings for Water, Fuel, and Wastewater
- Stainless Steel Vents
- Stainless Steel Scuppers
- Stainless Steel Drain
- PVC Rub Rail with Stainless Steel Trim
- 1 Stainless Steel Portlight (10")
- 4 Fixed Panoramic Tempered Glass Windows in the Hull
- 1 Hinged Tempered Glass Window in the Cabin
- 1 Cabin Hatch (20")
- Tempered Glass Windshield with Anodized Aluminum Frame
- 4-Step Telescopic Swim Ladder on the Swim Platform
- Side Deck Access to the Bow
- Triple Bow Lounge with Adjustable Backrest and Cup Holders
- Stainless Steel Handrail for Access to the Bow Sun Pad
- Stainless Steel Handrail in the Galley Area
- 5 Storage Compartments Under the Cockpit Seats
- Teak Table
- Marine-Grade Anti-Mildew Vinyl Upholstery
- Side Galley with Top Lid, Sink, and Space for a Grill
- T-Top with Hard Roof and LED Lighting
- Acrylic Chart Holder on the Dash
- 6 Stainless Steel Cup Holders
- White Isophthalic Gelcoat Finish
- Dashboard Designed for Up to Two 9" Electronics with Built-in Compass
- Double Helm Seat with Leg Support for Standing or Seated Steering
- Portside L-Shaped Sofa with Integrated Foldable Stern Sun Pad
- Side Cooler
- Trash Bin
- Electric Side Deck Hatch

HEAD

- Electric Marine Toilet with 80L Holding Tank, Macerator Pump, and External Discharge Fitting
- Vanity Cabinet with Single Door, Synthetic Granite Countertop, and Above-Counter Basin in Tempered Glass or Ceramic
- Overhead Storage Cabinet with Mirrored Door
- Decorative Wall Paneling
- Shower with Mixer Faucet
- Tempered Glass Enclosed Shower
- 6'2" (1.88m) Headroom
- Non-Slip Flooring

CABIN

- Acrylic Cabin Door with Lock and Key
- Wide 3-Step Teak Staircase with Handrail
- Moisture-Resistant MDF Cabinetry
- Galley with Sink, Synthetic Granite Countertop, Space for Microwave, Induction Cooktop, and Storage Cabinet
- Decorative Mirror at the Bow
- U-Shaped Sofa for 3, Convertible into a Double Bed with Retractable Teak Table
- Midship Side Sofa
- Midship Double Berth
- Waterproof Fabric or Marine-Grade Anti-Mildew Vinyl Upholstery
- Sidewalls Covered with Foam and Marine-Grade Anti-Mildew Vinyl
- Vinyl Flooring
- 6'3" (1.90m) Headroom at the Entrance

ENGINE ROOM

- Interior Finished in Gray Gelcoat
- Flat Non-Slip Flooring
- Acoustic and Thermal Insulation
- Dedicated Battery Compartment
- 2 Exhaust Fans
- Quick-Access Hatch with Gas Struts and Locking Latch
- Aluminum Fuel Tank with Level Gauge and Carbon Canister

PUMPS AND TANKS

- 200L Freshwater Tank with External Fill Port
- 3.5 GPH Pressurizing Pump
- 2 Automatic Bilge Pumps in the Engine Room
- 1 Automatic Bilge Pump at Midship
- Shower Drain Box with Pump
- Stern Hand Shower with Mixer Faucet
- Stainless Steel Faucets in the Galley, Head, and Outdoor Galley

ELECTRICAL

- Breaker Panel
- Electrical Panel at the Helm with Specialty Switches
- Port & Starboard Navigation Lights
- Anchor Light Mast
- Indirect LED Lighting on the Cockpit Ceiling, Cabin, and Under the Sofas
- LED Spotlights on the Cabin Ceiling, Head, and Cockpit
- LED Spotlights for Swim Platform Illumination
- Engine Room Lighting
- 110V Outlets in the Cockpit, Cabin, and Head
- 12V / USB Outlets on the Dash and in the Cabin
- Shore Power Connection
- Dedicated Battery Switches for Accessories and Engines
- Automatic Battery Charge Relay
- 2 x 220Ah Batteries for Accessories
- 2 x 150Ah Batteries for Engines
- 1 x 70Ah Battery for Optional Generator

OPTIONS INCLUDED

- GPS
- Sound System
- Generator
- Air Conditioning
- Anchor Windlass Electric System
- VHF Radio w/ Antenna
- Synthetic Teak or EVA Flooring
- Macerator Pump and Holding Tank
- Electric Trim Tabs (Flaps)
- Shore Power + Shore Cord 50A
- Galvanic Isolator (Electrical Protection)
- Fenders & Lines
- USCG Boating Safety Kit

OUTBOARD & INBOARD OPTIONS

2026 HANOVER 347

OUTBOARD

ESSENTIAL

PACKAGE

PREMIUM

PACKAGE

Engine	Twin Mercury® 225HP DTS V6	Twin Mercury® 250HP DTS V8 w/ Joystick Piloting
GPS	GPS SIMRAD® Go7 (7")	GPS SIMRAD® Go9 (9")
Exterior Painting	1 Color (Hull)	2 Colors or More (Hull, Deck or HT)
A/C	Battery Operated A/C - 7,000 BTU (Cabin)	12,000 BTU (Cabin)
VHF Radio	Uniden® VHF Radio w/ Antenna	SIMRAD® VHF Radio w/ Antenna
Sound System	Boss Sound Kit + 6 JBL Marine Speakers + Amplifier	Fusion® Marine Sound Kit + 6 Marine Speakers + Amplifier
Electric Trim Tabs (Flaps)	✓	✓
Electric Anchor Windlass System	✓	✓
Macerator Pump And Holding Tank	✓	✓
Shore Power System	✓	✓
Shore Power Cord 50A	✓	✓
Power Charger 100A	✓	✓
Heavy Duty Folding Table (Cockpit)	✓	✓
Galvanic Isolator (Electrical Protection)	✓	✓
Lines & Fenders	✓	✓
USCG Boating Safety Kit	✓	✓
Italian Steering Wheel	✓	✓
EVA Flooring (Cockpit, Platform, Bow)		✓
Electric Opening Beach Club		✓
Headlights With Remote (Cruising Spotlight)		✓
Hot Water System - Heater (Shower)		✓
Induction Electric Stove (Cabin)		✓
Upholstered Stools/Chairs On Stern (Kit Of 2 Banquets)		✓
Teak Table On Stern (Platform Extra Table)		✓
Design Items Set (Pillows, Bedding, Cushions, Towels, Accessories)		✓
5KW Power Generator		✓
Microwave Oven		✓
79L Refrigerator - 110V		✓
Kenyon Electric Grill (Cockpit)		✓

\$413,305

\$497,615

INBOARD

ESSENTIAL
PACKAGEPREMIUM
PACKAGE

Engine	Single Mercury® Mercruiser Axis 380HP	Twin Mercury® Mercruiser Axis 250HP w/ Joystick Piloting
GPS	GPS SIMRAD® Go7 (7")	GPS SIMRAD® Go9 (9")
Exterior Painting	1 Color (Hull)	2 Colors or More (Hull, Deck or HT)
A/C	Battery Operated A/C - 7,000 BTU (Cabin)	12,000 BTU (Cabin)
VHF Radio	Uniden® VHF Radio w/ Antenna	SIMRAD® VHF Radio w/ Antenna
Sound System	Boss Sound Kit + 6 JBL Marine Speakers + Amplifier	Fusion® Marine Sound Kit + 6 Marine Speakers + Amplifier
Electric Trim Tabs (Flaps)	✓	✓
Electric Anchor Windlass System	✓	✓
Macerator Pump And Holding Tank	✓	✓
Shore Power System	✓	✓
Shore Power Cord 50A	✓	✓
Power Charger 100A	✓	✓
Heavy Duty Folding Table (Cockpit)	✓	✓
Galvanic Isolator (Electrical Protection)	✓	✓
Lines & Fenders	✓	✓
USCG Boating Safety Kit	✓	✓
Italian Steering Wheel	✓	✓
EVA Flooring (Cockpit, Platform, Bow)		✓
Electric Opening Beach Club		✓
Headlights With Remote (Cruising Spotlight)		✓
Hot Water System - Heater (Shower)		✓
Induction Electric Stove (Cabin)		✓
Upholstered Stools/Chairs On Stern (Kit Of 2 Banquets)		✓
Teak Table On Stern (Platform Extra Table)		✓
Design Items Set (Pillows, Bedding, Cushions, Towels, Accessories)		✓
5KW Power Generator		✓
Microwave Oven		✓
79L Refrigerator - 110V		✓
Kenyon Electric Grill (Cockpit)		✓

\$383,305

\$492,615

BUILD YOUR BOAT.

Choose Upgrades
Tailored to Your Lifestyle.

*Hanover*³⁴⁷

2026



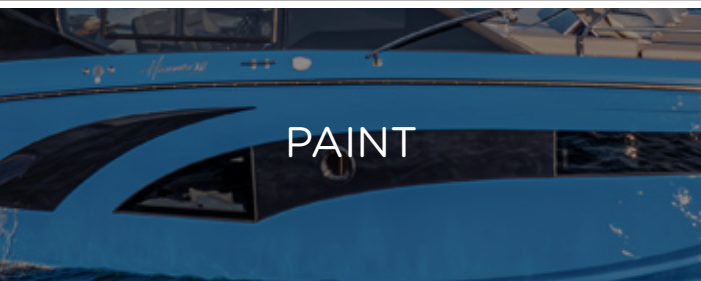
BUILD YOUR BOAT BY SELECTING ITEMS FROM THE LIST BELOW

INBOARD

MERCURY SINGLE MERCUISER AXIUS 380HP
MERCURY TWIN MERCUISER AXIUS 250HP W/ JOYSTICK PILOTING
MERCURY TWIN MERCUISER AXIUS 300HP W/ JOYSTICK PILOTING
MERCURY TWIN MERCUISER AXIUS 350HP W/ JOYSTICK PILOTING
VOLVO TWIN D6 380HP DIESEL
VOLVO TWIN D6 400HP DIESEL

OUTBOARD

MERCURY TWIN 225HP DTS V6 OUTBOARDS
MERCURY TWIN 250HP DTS V8 OUTBOARDS
MERCURY TWIN VERADO 250HP V8 OUTBOARDS W/ JOYSTICK PILOTING
MERCURY TWIN 300HP DTS V8 OUTBOARDS
MERCURY TWIN VERADO 300HP V8 OUTBOARDS W/ JOYSTICK PILOTING
MERCURY TWIN VERADO 350HP V10 OUTBOARDS W/ JOYSTICK PILOTING
MERCURY TWIN VERADO 400HP V10 OUTBOARDS W/ JOYSTICK PILOTING



EXTERNAL SINGLE PAINTING (1 COLOR, HULL)
EXTERNAL DOUBLE PAINTING (2 OR MORE COLORS, HULL, DECK OR HT)
EXTERNAL COMPLETE SPECIAL PAINT AND OR SPECIAL COLOR SELECTION
BOTTOM PAINT - ANTIFOUL COPPERCOAT PAINT



ELECTRIC TRIM TABS (FLAPS)
HUMPHREE AUTOMATIC TRIM TABS
ZIP WAKE AUTOMATIC TRIM TABS
HEAD LIGHTS WITH REMOTE (CRUISING SPOTLIGHT)
BOW THRUSTERS
MC² QUICK GYRO STABILIZERS (X10)
FLIR NIGHT VISION
ITALIAN STEERING WHEEL



FLOORING

EVA FLOORING (COCKPIT, PLATFORM, BOW)
SYNTHETIC TEAK FLOORING (COCKPIT, PLATFORM, BOW)
REAL TEAK FLOORING (COCKPIT, PLATFORM, BOW)



AUDIO

BOSS SOUND KIT + 6 JBL MARINE SPEAKERS + AMPLIFIER
JBL MARINE SPEAKERS (EXTRA PAIR)
JBL MARINE SUBWOOFER
JBL MARINE AMPLIFIER (EXTRA) (2 CHANNELS)
FUSION MARINE AMPLIFIER (EXTRA) (2 CHANNELS)
FUSION MARINE SOUND SYSTEM KIT + 6 MARINE SPEAKERS + AMPLIFIER
JL AUDIO KIT 1 - MEDIA MASTER + 6 SPEAKERS + AMP
JL AUDIO KIT 2 - MEDIA MASTER + 8 SPEAKERS + AMP + SUBWOOFER



ELECTRONICS

GPS RAYMARINE ELEMENT 7S (7")
GPS RAYMARINE AXIOM 9"
GPS RAYMARINE AXIOM 12"
GPS SIMRAD Go7 (7")
GPS SIMRAD Go9 (9")
GPS SIMRAD NSS 10" EVO4 (10")
GPS SIMRAD NSS12 (12")
GPS SIMRAD NSX15 ULTRAWIDE (15")
GPS SIMRAD NSS16 (16")
GPS GARMIN 9"
GPS GARMIN 12"
MERCURY VESSEL VIEW 4"
MERCURY VESSEL VIEW 7"
MERCURY VESSEL VIEW 9"
SIMRAD RADAR HALO20+
RAYMARINE RADAR QUANTUM II
GARMIN RADAR
UNIDEN VHF RADIO W/ ANTENNA
SIMRAD VHF RADIO W/ ANTENNA

A close-up photograph of a generator control panel. It features a digital display screen showing '12.1' and several physical buttons and switches. The panel is mounted on a light-colored surface.

GENERATOR

ONAN 5KW POWER GENERATOR
KOHLER 6KW POWER GENERATOR
KOHLER 9KW POWER GENERATOR
KOHLER 11KW POWER GENERATOR

A photograph showing a close-up of a boat's interior seating area. Two blue, quilted seat covers are visible, resting on a light-colored, textured surface.

COVERS

SET OF WEATHERIZED EXTERIOR SEAT COVERS
SNAP-ON CANVAS COVER
EISENGLASS ENCLOSURE

A photograph of an air conditioning unit installed in a boat's cabin. The unit is white with a black grille and is mounted on a wall. A small, dark, rectangular object is visible on the wall to the left of the unit.

AIR CONDITIONING

A/C SYSTEM - 6,000 BTU (COCKPIT)
A/C SYSTEM - 9,000 BTU (COCKPIT)
A/C SYSTEM - 12,000 BTU (CABIN)
A/C SYSTEM - 16,000 BTU (CABIN)
BATTERY OPERATED A/C - 7,000 BTU (CABIN)

A photograph of a boat's kitchen area. It shows a stainless steel sink with a chrome faucet. In the background, there is a microwave oven mounted on a wall and a small potted plant on the counter.

UTILITIES

ELECTRIC ANCHOR WINDLASS SYSTEM - 1000W + 10KG ANCHOR AND 40M CHAIN
WINDSHIELD WIPERS
MACERATOR PUMP AND HOLDING TANK
HOT WATER SYSTEM - HEATER (SHOWER)
SHORE POWER SYSTEM
SHORE POWER CORD 50A
POWER CHARGER 100A
POWER CHARGER/INVERTER 1800W
POWER CHARGER/INVERTER 3000W
INDUCTION ELECTRIC STOVE (CABIN)
MICROWAVE OVEN
79L REFRIGERATOR - 110V
ISOTHERM 65L FRIDGE 12V
REFRIGERATED 12V DRAWER (COCKPIT)
ISOTHERM ICE MAKER
KENYON ELECTRIC GRILL (STBD)
LED 24" TV SET AND MOUNTING
USCG BOATING SAFETY KIT
LINES & FENDERS



COMFORT & DESIGN

ENCLOSED HARDTOP W/ ELECTRIC SUNROOF
ELECTRIC OPENING BEACH CLUB
WOODEN STOOLS/CHAIRS ON STERN (KIT OF 2 BANQUETS)
UPHOLSTERED STOOLS/CHAIRS ON STERN (KIT OF 2 BANQUETS)
TEAK TABLE ON STERN (PLATFORM EXTRA TABLE)
HEAVY DUTY FOLDING TABLE (COCKPIT)
BOW TENT (BIMINI TOP ON BOW)
HYDRAULIC UNDERWATER SWIM PLATFORM (**INBOARDS ONLY**)
CERAMIC MARBLE DECORATIVE WALL (HEAD)
MID SHIP CABIN ROOM ENCLOSURE (WOOD/DOOR)
MAIN CABIN ROOM ENCLOSURE (WOOD/DOOR)
MANUAL AFT SHADE (STOBAG)
ELECTRIC AFT SHADE (STOBAG)
ITALIAN PREMIUM UPHOLSTERY
LEATHER COVER PANEL (COMPLETE DASHBOARD & HELM)
ADJUSTABLE SINGLE SEAT - MANUAL
ADJUSTABLE SINGLE SEAT - ELECTRIC
LED MIRROR UPGRADE (BATHROOM)
BLACK EXTERIOR RAILING
DESIGN ITEMS SET (PILLOWS, BEDDINES, CUSHIONS, TOWELS, ACCESSORIES)



ADDITIONAL UPGRADES

UNDERWATER LIGHTS (PAIR)
RGB CHANGING LIGHTS (COCKPIT)
GALVANIC ISOLATOR (ELECTRICAL PROTECTION)
FIREBOY - ADVANCED FIRE SUPPRESSION SYSTEM
LIVEWELL (COCKPIT)
ADJ ENGINE PROTECTION RAILING W/ ROD HOLDERS
ADJ ENGINE PROTECTION RAILING
PPF (PAINT PROTECTION FILM)
YACHT CONTROLLER
STARLINK
ADDTL USB / ELECTRICAL OUTLETS
REMOVABLE LADDER (BEACH CLUB)



For Pricing and more Options
Contact us now:



www.hanoveryachts.com



sales@hanoveryachts.com

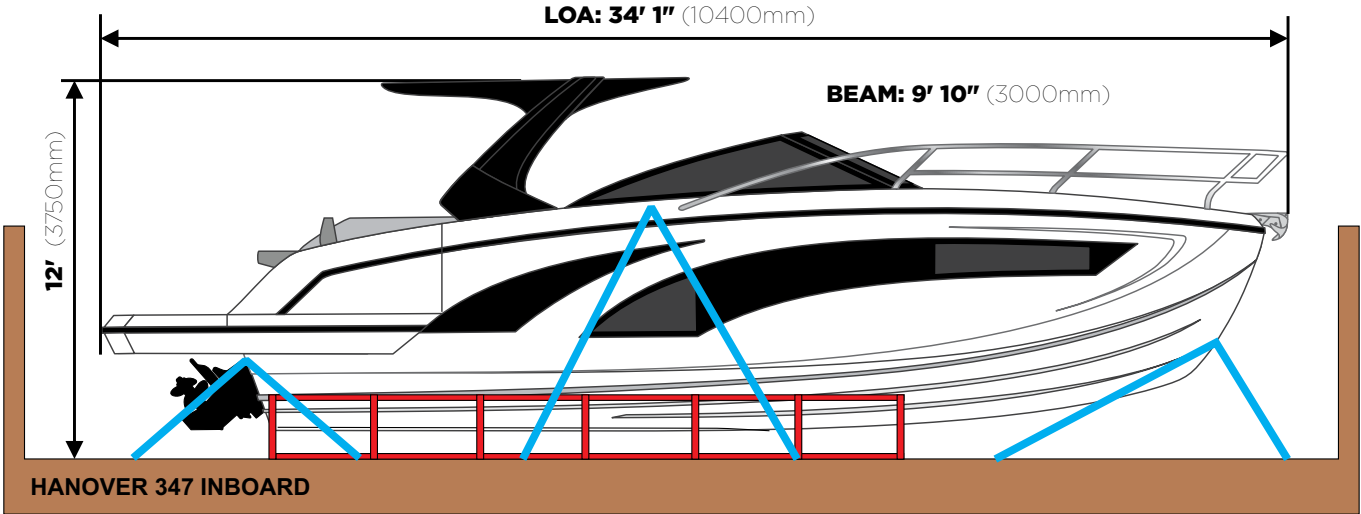
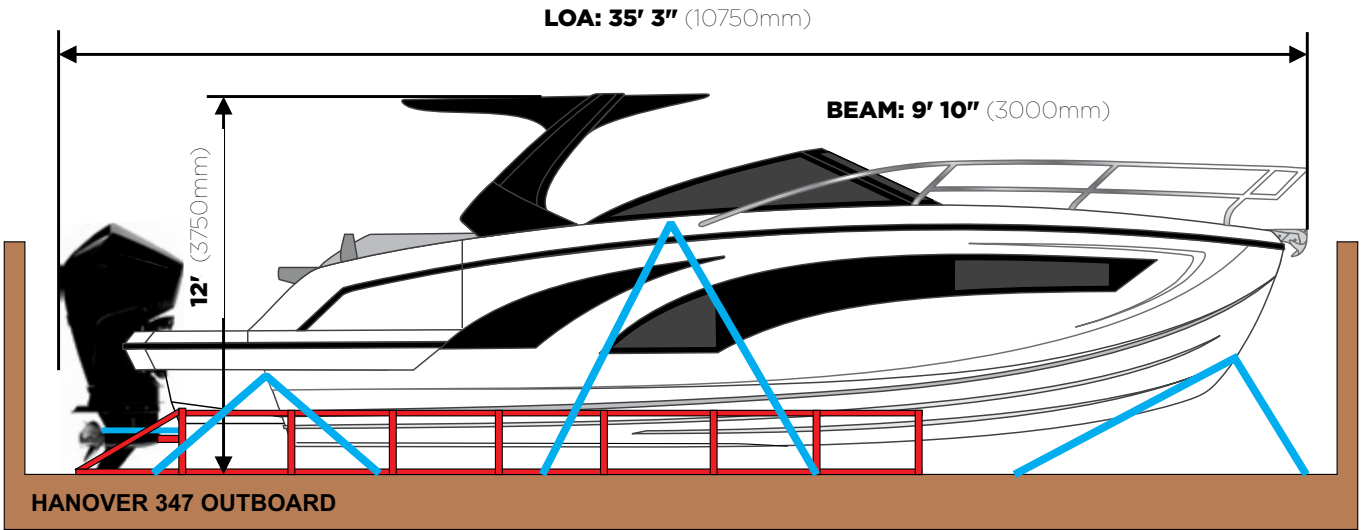


+1 954-355-9204



+1 (305) 452-0002

SHIPPING DIMENSIONS



HANOVER OWNERSHIP PROGRAM

At Hanover, we ensure an exciting stress-free experience from the moment you discover our brand.

STRESS-FREE PRICING

Our entire lineup comes at our lowest price - no haggling needed. Leave the negotiations to used car salesmen, and enjoy a straightforward buying experience with us.

FIRST TRIP

We've got you covered! You'll receive thorough training, and a captain will accompany you until you feel fully confident at the helm. Enjoy the experience like a pro!

MAINTENANCE AND WARRANTY

Every Hanover vessel includes a 5-Year Premier Level Hull Warranty, 1 Year General, Mechanical and Components Warranty, All Accessories & Electrical Parts Under The Original Manufacturer's Warranty.

Cruise with complete confidence knowing you have a team of dedicated professionals at your service.

Don't just own a boat, be part of the Hanover Lifestyle.



Hanover

www.hanoveryachts.com