



Hanover / 415

hanoveryachts.com / 2026



The Hanover 415 has all the space and luxury you could ask for. The walkaround design gives you plenty of room to relax, while two spacious cabins and a fully equipped galley keep things comfortable. And with triple engines delivering serious speed, you won't need, or want, anything else.

Hanover 415

AFT & COCKPIT



Hanover 415

GALLEY, CABINS, & HEAD.



Hanover 415



2026

BOW & STERN.



Hanover 415



2026

TECHNICAL SPECIFICATIONS



LENGTH

Outboards: 43' 2" / 13.15 m
Inboards: 41' 4" / 12.60 m



BEAM

12' 2" / 3,70 m



DRAFT

35.4" / 0.90m



DRY WEIGHT

25,573 lbs / 11,600 kg



FUEL TANK CAPACITY

370 gal / 1192 L



WATER TANK CAPACITY

118 gal / 450 L



HOLDING TANK

20 gal / 75 L



CAPACITY

14 day / 5 Night



CRUISING SPEED

25-27 mph / 40-43 kmh
Range: 27 mph - 37 gal/h
Idle: 6 mph - 15.5 gal/h (aprox.)



WIDE OPEN THROTTLE

40-45 mph / 64-72 kmh
Range: 45 mph - 75 gal/h



DEADRISE

17°



BRIDGE CLEARANCE

10'4" / 3.2 m
12'4" / 3.8 m with accessories

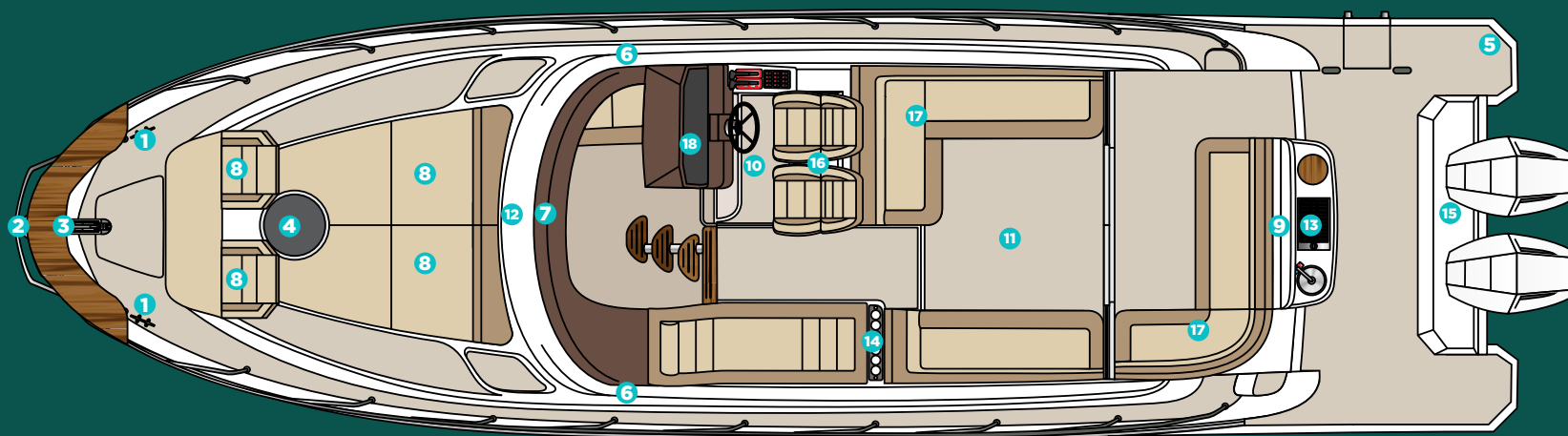


Hanover 415

2026

HULL AND COCKPIT

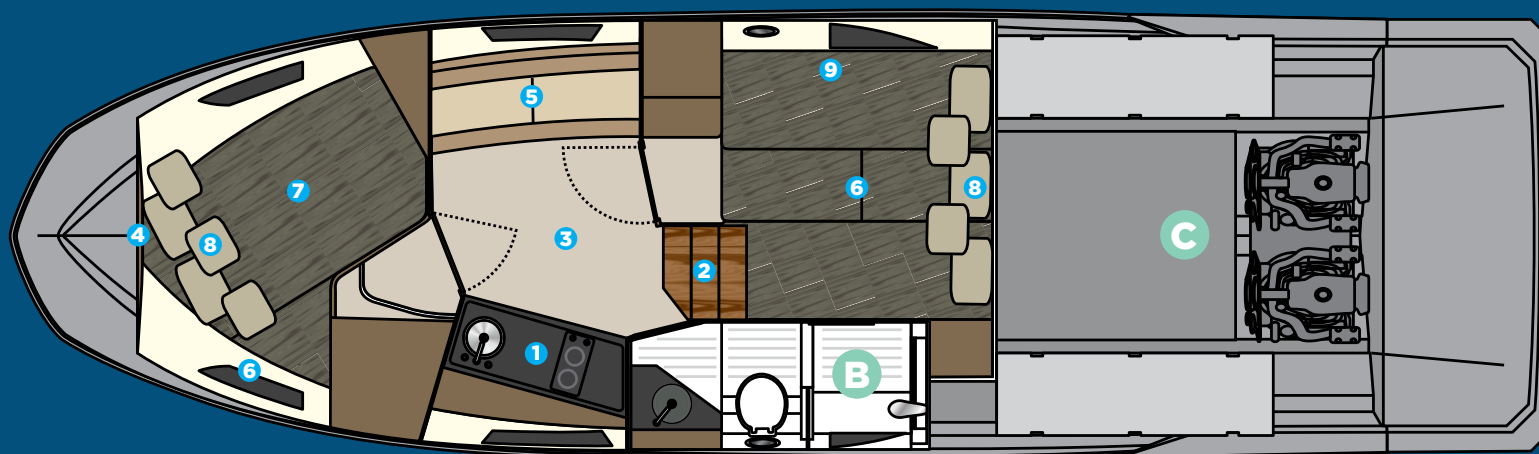
- 1** 8" through bolted stainless steel cleats (06 count)
- 2** 1 bow eye
- 3** Stainless steel handrail with teak seat in the bow
- 4** 20" hatch in the bow from cabin to bow area
- 5** 4-step telescopic ladder on platform
- 6** 6 panoramic tempered glass windows
- 7** Tempered glass windshield and anodized aluminum frame
- 8** 4 adjustable sunpads on the bow
- 9** Handle stainless steel in the gourmet space



- 10** 4 compartments below the cockpit seats
- 11** Teak table
- 12** Teak steps to the bow
- 13** Gourmet space with top lid, sink and grill place
- 14** Acrylic cup holder in the cockpit
- 15** Compartment for fenders on the platform floor
- 16** Dual rider seat with standing or sitting
- 17** Two seating areas in the cockpit
- 18** Instrument panel that supports up to two 9" electronics with built-in compass

A CABIN

- 1 Kitchen with sink, synthetic granite top, space for microwave, induction stove, fridge, 3 drawers and 3 cabinets
- 2 Staircase with 3 wide teak steps
- 3 Vinilic special flooring
- 4 Decorative mirror on the bow
- 5 Sofa for 3 people with Teak table
- 6 Sofa for 3 people convertibles into a double bed in the Middle ship cabin
- 7 Couple bed in the bow cabin
- 8 Luxury layette kit with 10 pillows



B HEAD

- Electric toilet with 22 gallon waste box, macerator pump and external nozzle
- Cabinet with four doors, sink in synthetic granite with bowl overlaid in tempered glass
- Air cabinet with four mirrored doors
- Decorative coating with glass inserts
- Shower box free standing height 6'2" /1,88 min
- Tempered glass box
- Shower with mixer
- Non-slip floor

C ENGINE

- Interior in gray gelcoat
- Non-slip sole, flat
- Insulation, acoustic and thermal
- Fire extinguisher
- Compartment, sealed, for air conditioning
- Compartment, sealed, for batteries
- Exhaust fans (2)
- Engine room hatch
- Access door with gas pistons and lock
- Fuel tank, aluminum, with level gauge

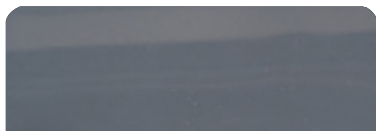
**CUSTOMIZE
AND HAVE
THE MOST
UNIQUE
VESSEL
AT SEA.**



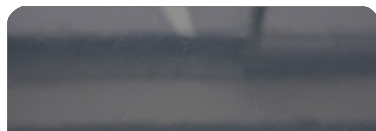


EXTERIOR PAINT OPTIONS

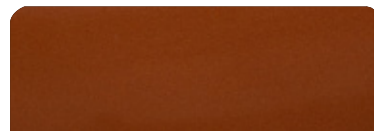
All options are available in either a high-gloss or matte finish.



Moonstone Gray



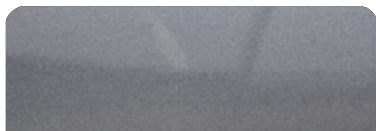
Pure Gray



Orange Pearl



Spring Blue



Orkney Gray



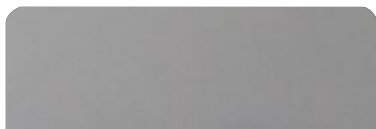
Ice Silver



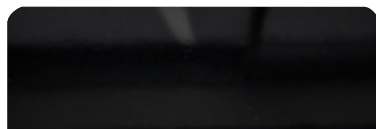
Moscou Red



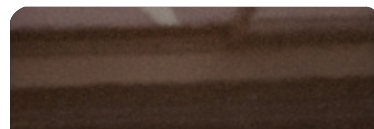
Heraldic Blue



Crayon Gray



Gales Black (Tuxedo)



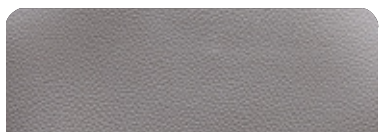
Marrakesh Brown



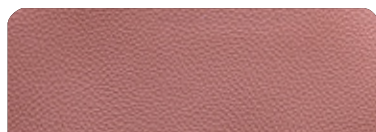
Macaw Blue



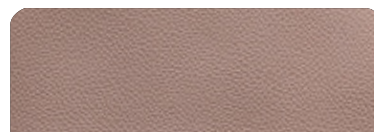
UPHOLSTERY OPTIONS



Fern



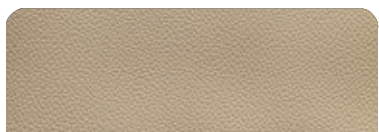
Terracota



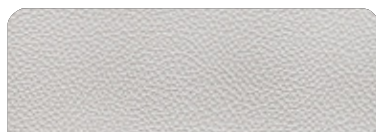
Caramello



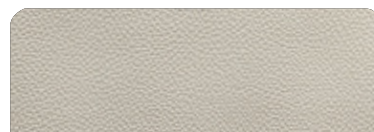
Black



Land Rover



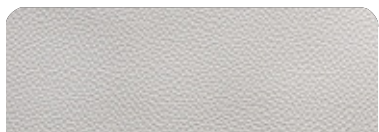
Taupe



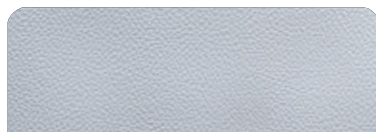
Ivory



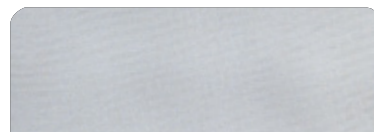
Orange



Off White



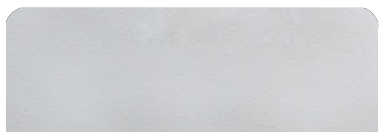
Gray



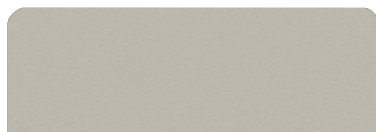
Silver



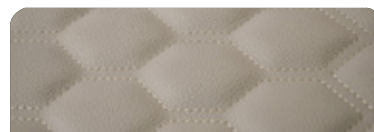
Carbon Fiber



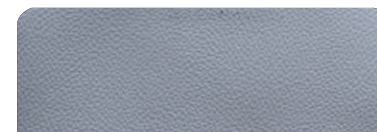
White



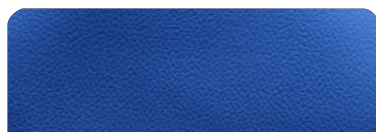
Beige



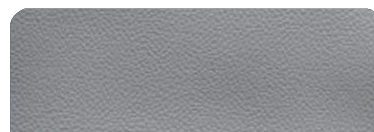
Matelasse Honeycomb



New Corolla



Blue



Corolla

Hanover 415

*Additional options are available upon request.

2026

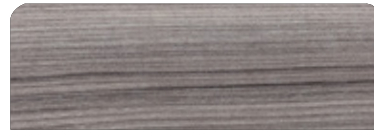
FURNITURE VINYL OPTIONS



Salina



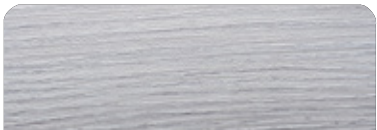
Massal



Cherry



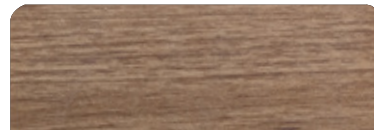
Patina



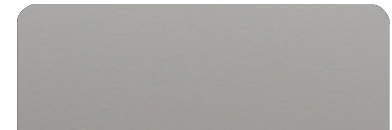
Alder



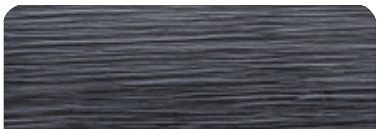
Bronze



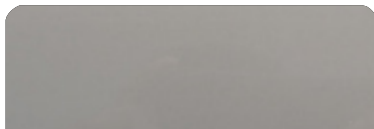
Freije



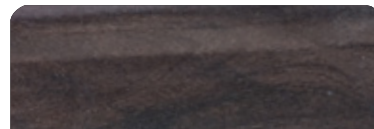
Taupe Super Matte



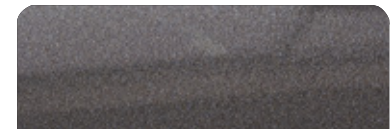
Black Line



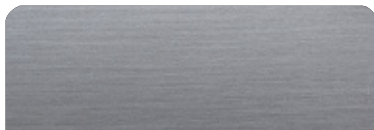
Taupe High Gloss



Canyon



Onix



Metallic



Gray Oak



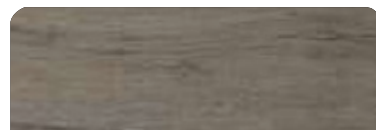
INTERIOR FLOORING OPTIONS



Alba



Almond



Pine



Amendola



Sand



Cement



Imbuia



Cumaru



Gray



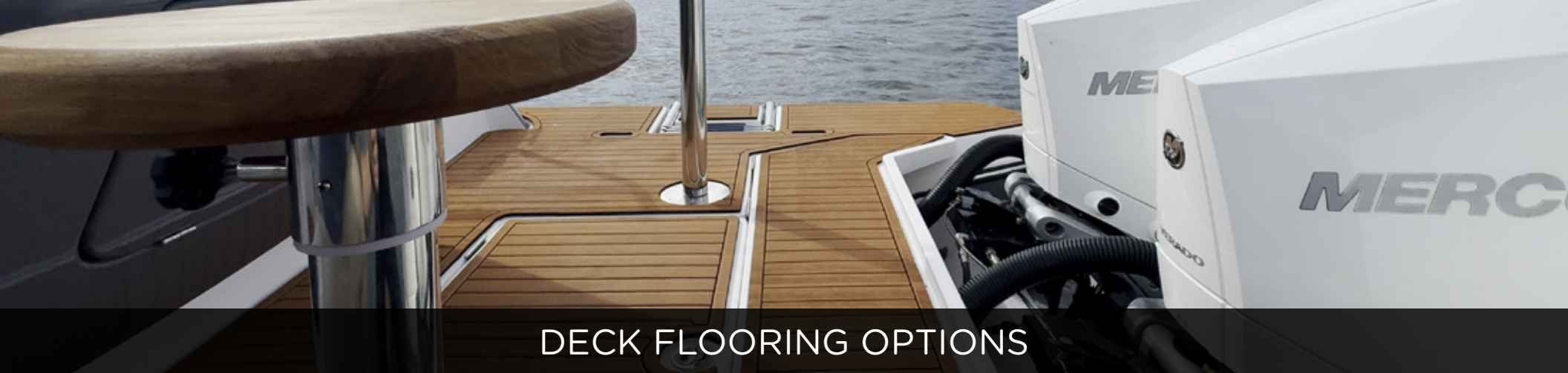
Duna



Vintage

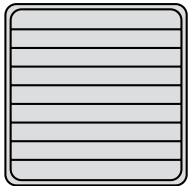


Kashmir

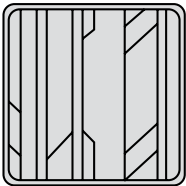


DECK FLOORING OPTIONS

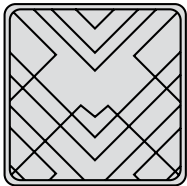
PATTERNS



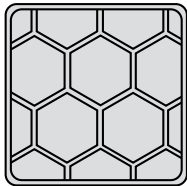
Classic



Aztec



Imperial



Beehive

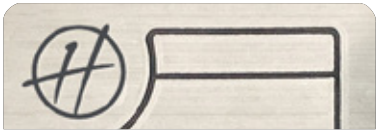
EVA



Tuscany



Ocher



Gray

SYNTHETIC
TEAK



Gray



Madeira



Sand

STANDARD EQUIPMENT

HULL AND DECK

- 8" through bolted stainless steel cleats
- (06 count)
- 1 bow eye
- 2 eyes at the stern
- Stainless steel handrail with teak seat in the bow
- Self-draining floor
- 20" hatch in the bow from cabin to bow area
- 6 panoramic tempered glass windows
- Tempered glass windshield and anodized aluminum frame
- 4-step telescopic ladder on platform
- Double bow solarium with adjustable backrest
- Handle stainless steel in the gourmet space
- Compartment for fenders on the platform floor
- 4 compartments below the cockpit seats
- Teak table
- Upholstery in anti-mold leather
- Gourmet space with top lid, sink, cooler, cutting board and grill place
- Hard-Top with electric opening
- Acrylic cup holder in the cockpit
- Instrument panel that supports up to two 9" electronics with built-in compass
- Dual rider seat with standing or sitting
- Two seating areas in the cockpit
- Garbage Displacement

PUMPS AND TANKS

- Water tank, potable
- Fresh water pump
- Bilge pumps, engine room, with automatic switches
- Bilge pump, at midships, with automatic switch
- Collection box for shower with pump
- Showerhead, aft, with mixer

CABIN

- Staircase with 3 wide teak steps
- Ultra moisture resistant MDF furniture
- Kitchen with sink, synthetic granite top, space for microwave, induction stove, fridge, 3 drawers and 3 cabinets
- Vinilic special flooring
- Decorative mirror on the bow
- Sofa for 3 people with Teak table
- Sofa for 3 people convertibles into a double bed in the Middle ship cabin
- Couple bed in the bow cabin
- Coverings in waterproof fabric or anti-mold nautical leather
- Side walls covered with anti-mold foam and nautical leather
- Luxury layette kit with 10 pillows

ENGINE ROOM

- Interior in gray gelcoat
- Non-slip sole, flat
- Insulation, acoustic and thermal
- Fire extinguisher
- Compartment, sealed, for air conditioning and batteries
- Exhaust fans (2)
- Engine room hatch
- Access door with gas pistons and lock
- Fuel tank, aluminum, with level gauge

HEAD

- Electric toilet with 22 gallon waste box, macerator pump and external nozzle
- Cabinet with four doors, sink in synthetic granite with bowl overlaid in tempered glass
- Air cabinet with four mirrored doors
- Decorative coating with glass inserts
- Shower with mixer
- Tempered glass box
- Shower box free standing height 6'2" /1,88 m
- Non-slip floor

ELECTRICAL

- Circuit breaker board
- Selector switch for pier/generator/inverter
- Electrical panel in the cockpit with special switches
- Navigation lights
- Anchoring lights
- Indirect LED lighting on the cockpit ceiling, bathroom, cabin, cabinet and under the sofas and dashboard
- LED spotlights on the cabin and cockpit ceiling
- Lighting in the engine room
- 120v sockets in the cockpit, cabin and bathroom
- 12v / USB sockets on the dashboard and in the cabin
- Shore power socket
- Individual master switches for accessory batteries and motors 2023

OPTIONS INCLUDED

- Synthetic teak or EVA on bow, cockpit and swim platform
- Sound system
- Anchor Windlass Electric System
- Anchor, 22 lbs, with chain
- VHF Radio w/ Antenna
- Sunroof, electric opening
- Holding tank with macerator
- Air conditioning, 12,000 BTU
- Generator
- Refrigerator
- Trim tabs, electric
- Spotlights
- Shorepower
- Gourmet Area
- HardTop with an electric sunroof

An aerial photograph of a Hanover 415 motorboat on the water. The boat features a large grey storage hatch on the deck, a swim platform with a ladder, and three outboard engines at the stern. The deck is finished with teak planking. The text "OUTBOARD & INBOARD OPTIONS" is overlaid in white on the left side of the image.

OUTBOARD & INBOARD OPTIONS

2026 HANOVER 415

OUTBOARD

ESSENTIAL PACKAGE

PREMIUM PACKAGE

Engine	Twin Mercury® VERADO 350HP V10 w/ Joystick Piloting	Twin Mercury® VERADO 400HP V10 w/ Joystick Piloting
GPS	GPS SIMRAD® Go9 (9")	GPS SIMRAD® NSX15 Ultrawide (15")
Exterior Painting	1 Color (Hull)	2 Colors or More (Hull, Deck or HT)
A/C	12,000 + 6,000 BTU (Cabin - Cockpit)	16,000 + 9,000 BTU (Cabin - Cockpit)
Refrigerator	79L Refrigerator - 110V	Isotherm®/Dometic® Fridge 12V
VHF Radio	Uniden® VHF Radio w/ Antenna	SIMRAD® VHF Radio w/ Antenna
Power Generator	Kohler® 6KW	Kohler® 9KW
Sound System	Boss Sound Kit + 6 JBL Marine Speakers + Amplifier	Fusion® Marine Sound Kit + 6 Marine Speakers + Amplifier
Electric Trim Tabs (Flaps)	✓	✓
Headlights With Remote (Cruising Spotlight)	✓	✓
EVA Flooring (Cockpit, Platform, Bow)	✓	✓
Electric Anchor Windlass System - 1000w + 10kg Anchor And 40m Chain (35+)	✓	✓
Windshield Wipers	✓	✓
Macerator Pump And Holding Tank	✓	✓
Hot Water System - Heater (Shower)	✓	✓
Shore Power System + Shore Power Cord 50A	✓	✓
Power Charger 100A	✓	✓
Italian Steering Wheel	✓	✓
Heavy Duty Folding Table (Cockpit)	✓	✓
Galvanic Isolator (Electrical Protection)	✓	✓
Induction Electric Stove (Cabin)	✓	✓
LED 24" TV Set And Mounting		✓
Microwave Oven		✓
Kenyon Electric Grill (Aft Deck)		✓
Upholstered Stools/chairs On Stern (Kit Of 2 Banquets)		✓
Teak Table On Stern (Platform Extra Table)		✓
Design Items Set (Pillows, Bedding, Cushions, Towels, Accessories)		✓
Electric Aft Shade (Stobag)		✓
Main Cabin Room Enclosure (Wood/Door)		✓
Mid Ship Cabin Room Enclosure (Wood/Door)		✓
Glass Door Enclosure (Cockpit)		✓

\$751,135

\$839,640

2026 HANOVER 415

INBOARD

ESSENTIAL PACKAGE

PREMIUM PACKAGE

Engine	Twin Mercury® Mercruiser Axis 350HP W/ Joystick Piloting	Twin Mercury® Mercruiser Axis 380HP W/ Joystick Piloting
GPS	GPS SIMRAD® Go9 (9")	GPS SIMRAD® NSX15 Ultrawide (15")
Exterior Painting	1 Color (Hull)	2 Colors or More (Hull, Deck or HT)
A/C	12,000 + 6,000 BTU (Cabin - Cockpit)	16,000 + 9,000 BTU (Cabin - Cockpit)
Refrigerator	79L Refrigerator - 110V	Isotherm®/Dometic® Fridge 12V
VHF Radio	Uniden® VHF Radio w/ Antenna	SIMRAD® VHF Radio w/ Antenna
Power Generator	Kohler® 6KW	Kohler® 9KW
Sound System	Boss Sound Kit + 6 JBL Marine Speakers + Amplifier	Fusion® Marine Sound Kit + 6 Marine Speakers + Amplifier
Electric Trim Tabs (Flaps)	✓	✓
Headlights With Remote (Cruising Spotlight)	✓	✓
EVA Flooring (Cockpit, Platform, Bow)	✓	✓
Electric Anchor Windlass System - 1000w + 10kg Anchor And 40m Chain (35+)	✓	✓
Windshield Wipers	✓	✓
Macerator Pump And Holding Tank	✓	✓
Hot Water System - Heater (Shower)	✓	✓
Shore Power System + Shore Power Cord 50A	✓	✓
Power Charger 100A	✓	✓
Italian Steering Wheel	✓	✓
Heavy Duty Folding Table (Cockpit)	✓	✓
Galvanic Isolator (Electrical Protection)	✓	✓
Induction Electric Stove (Cabin)	✓	✓
LED 24" TV Set And Mounting		✓
Microwave Oven		✓
Kenyon Electric Grill (Aft Deck)		✓
Upholstered Stools/chairs On Stern (Kit Of 2 Banquets)		✓
Teak Table On Stern (Platform Extra Table)		✓
Design Items Set (Pillows, Bedding, Cushions, Towels, Accessories)		✓
Electric Aft Shade (Stobag)		✓
Main Cabin Room Enclosure (Wood/Door)		✓
Mid Ship Cabin Room Enclosure (Wood/Door)		✓
Glass Door Enclosure (Cockpit)		✓

\$726,135

\$819,640

A high-angle, close-up shot of the stern of a dark blue motorboat. Two women are relaxing on the white vinyl deck. One woman with long dark hair is sitting up, wearing a white lace dress. The other woman with blonde hair is lying down, wearing a light-colored patterned dress. The deck is bordered by teak planking and stainless steel railings. A circular hatch is visible on the deck. The boat is on choppy blue water, and the sun is reflecting off the surface. The text 'BUILD YOUR BOAT.' is overlaid in large white letters on the left side.

BUILD YOUR BOAT.

Choose Upgrades
Tailored to Your Lifestyle.

Hanover 415

2026



ENGINES

BUILD YOUR BOAT BY SELECTING ITEMS FROM THE LIST BELOW

INBOARD

MERCURY TWIN MERCUISER AXIUS 350HP W/ JOYSTICK PILOTING

MERCURY TWIN MERCUISER AXIUS 380HP W/ JOYSTICK PILOTING

VOLVO TWIN D6 380HP DIESEL

VOLVO TWIN D6 400HP DIESEL

VOLVO TWIN IPS 600 440HP DIESEL W/ JOYSTICK

VOLVO TWIN IPS 600 650HP DIESEL W/ JOYSTICK

OUTBOARD

MERCURY TWIN VERADO 350HP V10 W/ JOYSTICK PILOTING

MERCURY TWIN VERADO 400HP V10 W/ JOYSTICK PILOTING

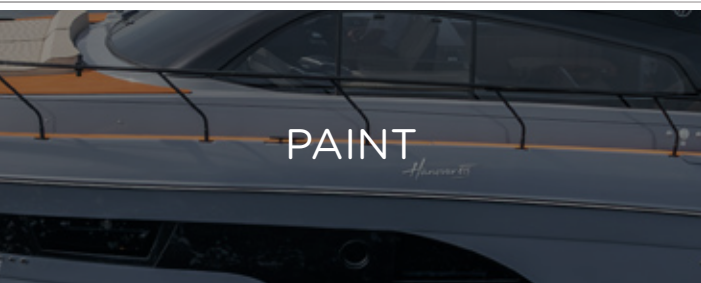
MERCURY TWIN VERADO 600HP V12 W/ JOYSTICK PILOTING

MERCURY TRIPLE VERADO 300HP V8 W/ JOYSTICK PILOTING

MERCURY TRIPLE VERADO 300R RACING W/ JOYSTICK PILOTING

MERCURY TRIPLE VERADO 350HP V10 W/ JOYSTICK PILOTING

MERCURY TRIPLE VERADO 400HP V10 OUTBOARDS W/ JOYSTICK PILOTING



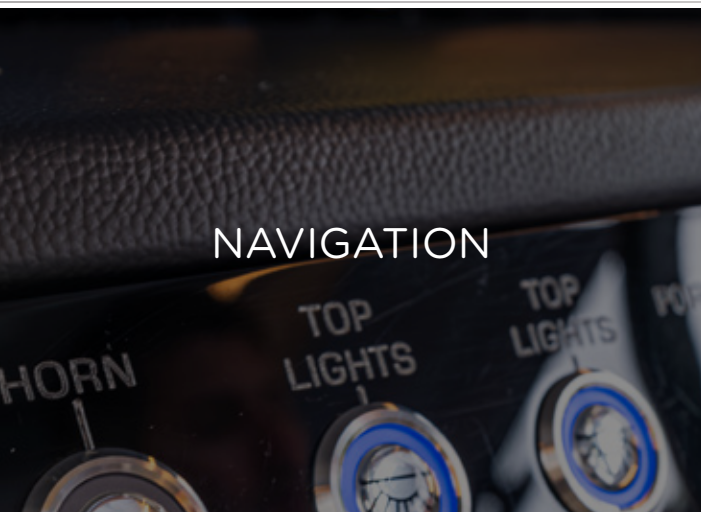
PAINT

EXTERNAL SINGLE PAINTING (1 COLOR, HULL)

EXTERNAL DOUBLE PAINTING (2 OR MORE COLORS, HULL, DECK OR HT)

EXTERNAL COMPLETE SPECIAL PAINT AND OR SPECIAL COLOR SELECTION

BOTTOM PAINT - ANTIFOUL COPPERCOAT PAINT



NAVIGATION

ELECTRIC TRIM TABS (FLAPS)

HUMPHREE AUTOMATIC TRIM TABS

ZIP WAKE AUTOMATIC TRIM TABS

HEAD LIGHTS WITH REMOTE (CRUISING SPOTLIGHT)

BOW THRUSTERS

MC² QUICK GYRO STABILIZERS (X10)

FLIR NIGHT VISION

ITALIAN STEERING WHEEL



FLOORING

EVA FLOORING (COCKPIT, PLATFORM, BOW)
SYNTHETIC TEAK FLOORING (COCKPIT, PLATFORM, BOW)
REAL TEAK FLOORING (COCKPIT, PLATFORM, BOW)




AUDIO

BOSS SOUND KIT + 6 JBL MARINE SPEAKERS + AMPLIFIER
FUSION MARINE SOUND SYSTEM KIT + 6 MARINE SPEAKERS + AMPLIFIER
JBL MARINE SUBWOOFER
JBL MARINE AMPLIFIER (EXTRA) (2 CHANNELS)
FUSION MARINE AMPLIFIER (EXTRA) (2 CHANNELS)
JBL MARINE SPEAKERS (EXTRA PAIR)
JL AUDIO KIT 1 - MEDIA MASTER + 6 SPEAKERS + AMP
JL AUDIO KIT 2 - MEDIA MASTER + 8 SPEAKERS + AMP + SUBWOOFER



ELECTRONICS

GPS RAYMARINE ELEMENT 7S (7")
GPS RAYMARINE AXIOM 9"
GPS RAYMARINE AXIOM 12"
GPS SIMRAD Go7 (7")
GPS SIMRAD Go9 (9")
GPS SIMRAD NSS 10" EVO4 (10")
GPS SIMRAD NSS12 (12")
GPS SIMRAD NSX15 ULTRAWIDE (15")
GPS SIMRAD NSS16 (16")
GPS GARMIN 9"
GPS GARMIN 12"
MERCURY VESSEL VIEW 4"
MERCURY VESSEL VIEW 7"
MERCURY VESSEL VIEW 9"
SIMRAD RADAR HALO20+
RAYMARINE RADAR QUANTUM II
GARMIN RADAR
UNIDEN VHF RADIO W/ ANTENNA
SIMRAD VHF RADIO W/ ANTENNA



GENERATOR

KOHLER 6KW POWER GENERATOR
KOHLER 9KW POWER GENERATOR
KOHLER 11KW POWER GENERATOR




COVERS

SET OF WEATHERIZED EXTERIOR SEAT COVERS
SNAP-ON CANVAS COVER
EISENGLASS ENCLOSURE



AIR CONDITIONING

A/C SYSTEM - 6,000 BTU (COCKPIT)
A/C SYSTEM - 9,000 BTU (COCKPIT)
A/C SYSTEM - 12,000 BTU (CABIN)
A/C SYSTEM - 16,000 BTU (CABIN)



UTILITIES

ELECTRIC ANCHOR WINDLASS SYSTEM - 1000W + 10KG ANCHOR AND 40M CHAIN (35+)
WINDSHIELD WIPERS
MACERATOR PUMP AND HOLDING TANK
HOT WATER SYSTEM - HEATER (SHOWER)
SHORE POWER SYSTEM
SHORE POWER CORD 50A
POWER CHARGER 100A
INDUCTION ELECTRIC STOVE (CABIN)
MICROWAVE OVEN
79L REFRIGERATOR - 110V
ISOTHERM 65L FRIDGE 12V
REFRIGERATED 12V DRAWER (COCKPIT)
ISOTHERM ICE MAKER (CABIN)
KENYON ELECTRIC GRILL (STERN)
LED 24" TV SET AND MOUNTING
ELECTRONIC OPENING TV SET (COCKPIT)
USCG BOATING SAFETY KIT
LINES & FENDERS



COMFORT & DESIGN

ITALIAN PREMIUM UPHOLSTERY
WOODEN STOOLS/CHAIRS ON STERN (KIT OF 2 BANQUETS)
UPHOLSTERED STOOLS/CHAIRS ON STERN (KIT OF 2 BANQUETS)
TEAK TABLE ON STERN (PLATFORM EXTRA TABLE)
HEAVY DUTY FOLDING TABLE (COCKPIT)
BOW TENT (BIMINI TOP ON BOW)
HYDRAULIC UNDERWATER SWIM PLATFORM (**INBOARDS ONLY**)
CERAMIC MARBLE DECORATIVE WALL (HEAD)
MID SHIP CABIN ROOM ENCLOSURE (WOOD/DOOR)
MAIN CABIN ROOM ENCLOSURE (WOOD/DOOR)
MANUAL AFT SHADE (STOBAG)
ELECTRIC AFT SHADE (STOBAG)
GLASS DOOR ENCLOSURE FOR COCKPIT (415)
LEATHER COVER PANEL (COMPLETE DASHBOARD & HELM)
ADJUSTABLE SINGLE SEAT - MANUAL
ADJUSTABLE SINGLE SEAT - ELECTRIC
LED MIRROR UPGRADE (BATHROOM)
BLACK EXTERIOR RAILING
DESIGN ITEMS SET (PILLOWS, BEDDINES, CUSHIONS, TOWELS, ACCESSORIES)



ADDITIONAL UPGRADES

UNDERWATER LIGHTS (PAIR)
RGB CHANGING LIGHTS (COCKPIT)
GALVANIC ISOLATOR (ELECTRICAL PROTECTION)
FIREBOY - ADVANCED FIRE SUPPRESSION SYSTEM
LIVWELL (COCKPIT)
ADJ ENGINE PROTECTION RAILING W/ ROD HOLDERS
ADJ ENGINE PROTECTION RAILING
PPF (PAINT PROTECTION FILM)
YACHT CONTROLLER
STARLINK
ADDTL USB / ELECTRICAL OUTLETS



For Pricing and more Options
Contact us now:



www.hanoveryachts.com



sales@hanoveryachts.com



+1 954-355-9204



+1 (305) 452-0002

HANOVER OWNERSHIP PROGRAM

At Hanover, we ensure an exciting stress-free experience from the moment you discover our brand.

STRESS-FREE PRICING

Our entire lineup comes at our lowest price - no haggling needed. Leave the negotiations to used car salesmen, and enjoy a straightforward buying experience with us.

FIRST TRIP

We've got you covered! You'll receive thorough training, and a captain will accompany you until you feel fully confident at the helm. Enjoy the experience like a pro!

MAINTENANCE AND WARRANTY

Every Hanover vessel includes a 5-Year Premier Level Hull Warranty, 1 Year General, Mechanical and Components Warranty, All Accessories & Electrical Parts Under The Original Manufacturer's Warranty.

Cruise with complete confidence knowing you have a team of dedicated professionals at your service.

Don't just own a boat, be part of the Hanover Lifestyle.



Hanover

www.hanoveryachts.com