



*Hanover* / 387

hanoveryachts.com / 2026





First impressions matter, but with the Hanover 387, you have nothing to worry about. Its striking Hard-Top, wide beam, and spacious design offer unmatched comfort

on deck and in the cabin. With premium amenities and elegant details, you can relax and sleep comfortably, making every voyage unforgettable.

*Hanover* 387



# AFT & COCKPIT



Hanover 387



2026



# GALLEY, CABINS, & HEAD.



*Hanover* 387

2026



# BOW & STERN.



*Hanover* 387

2026



# TECHNICAL SPECIFICATIONS



## LENGTH

Outboards: 38' 10" / 11.85 m  
Inboards: 37' 3" / 11.35 m



## BEAM

10' 10" / 3.30 m



## DRAFT

33" / 0.8 m



## DRY WEIGHT

15,220 lbs / 6,904 kg



## FUEL TANK CAPACITY

265 gal / 946 L



## WATER TANK CAPACITY

50 gal / 190 L



## HOLDING TANK

20 gal / 75 L



## CAPACITY

15 day / 5 Night



## CRUISING SPEED

34 mph / 54 kmh  
Range: 34 mph - 39.6 gal/h  
Idle: 6.7 mph - 4.6 gal/h



## WIDE OPEN THROTTLE

46.5 mph / 74.8 kmh  
Range: 46.5 mph - 66.2 gal/h



## DEADRISE

16°



## BRIDGE CLEARANCE

10' 7" / 3.2 m  
12' 7" / 3.8 m with radar  
or anchor light

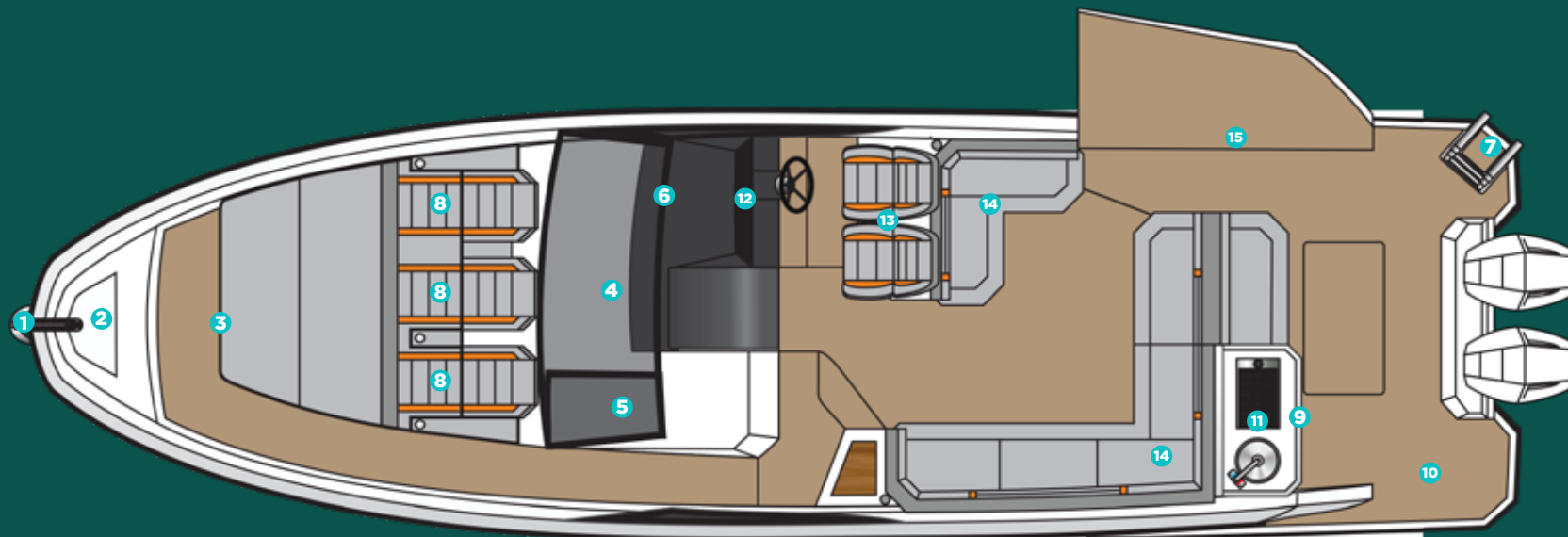


*Hanover* 387

2026

# HULL AND COCKPIT

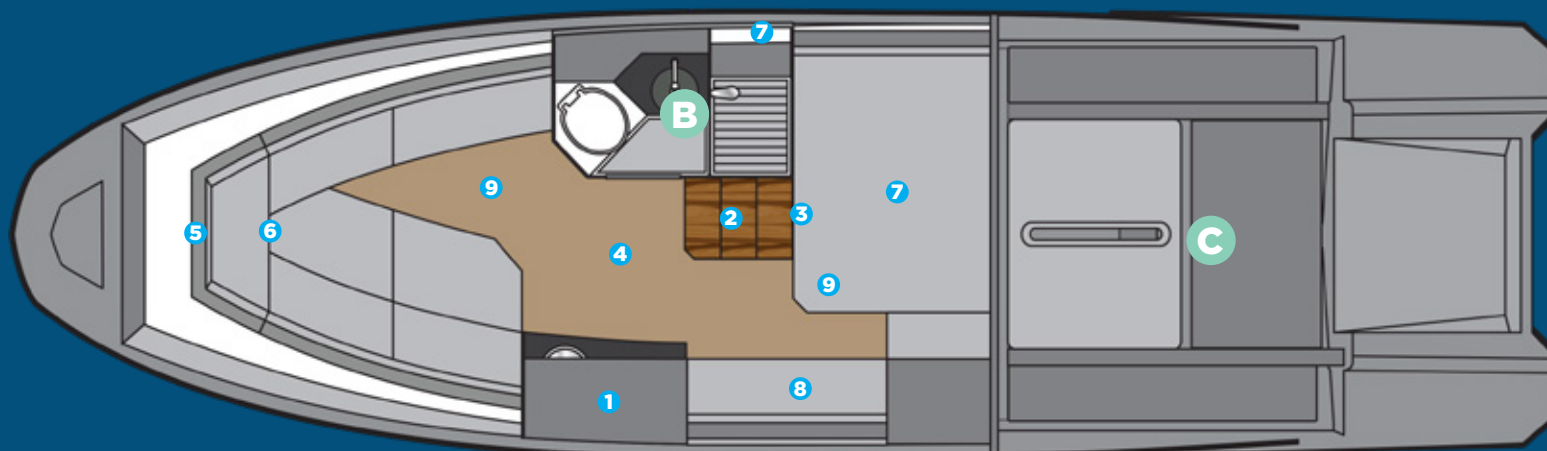
- 1** 1 bow eye
- 2** Stainless steel handrail with teak seat in the bow
- 3** 20" hatch in the bow from cabin to bow area
- 4** 4 panoramic tempered glass windows
- 5** 2 tilting tempered glass windows in the cockpit
- 6** Tempered glass windshield and anodized aluminum frame
- 7** 4-step telescopic ladder on platform
- 8** Triple bow solarium with adjustable backrest
- 9** Handle stainless steel in the gourmet space



- 10** Teak table
- 11** Gourmet space with top lid and sink
- 12** Instrument panel that supports up to two 9" electronics with built-in compass
- 13** Dual rider seat with standing or sitting
- 14** Two L-shaped sectional sofa in the cockpit and another in the stern
- 15** Electric Opening Lateral Deck - Beach Club System

## A CABIN

- 1 Kitchen with sink, synthetic granite top, space for microwave, induction stove, fridge, 3 drawers and two cabinets
- 2 Stainless steel staircase with 3 wide teak steps
- 3 Acrylic access sliding door with lock and key
- 4 High Quality Laminate Flooring
- 5 Decorative mirror on the bow
- 6 U-shaped sofa for 3 people that converts into a double bed, with teak retractable table
- 7 Double bed in the middle ship cabin
- 8 Sofa in the middle ship cabin
- 9 Free standing up of 9' in cabin center



## B HEAD

- Electric toilet with 22 gallon waste box, macerator pump and external nozzle
- Cabinet with two doors, sink in synthetic granite with bowl overlaid in tempered glass
- Air cabinet with two mirrored doors
- Decorative coating with glass inserts
- Shower box free standing height 6'2" /1,88 min
- Tempered glass box
- Shower with mixer
- Non-slip floor

## C ENGINE

- Interior in gray gelcoat
- Non-slip sole, flat
- Insulation, acoustic and thermal
- Fire extinguisher
- Compartment, sealed, for air conditioning
- Compartment, sealed, for batteries
- Exhaust fans (2)
- Engine room hatch
- Access door with gas pistons and lock
- Fuel tank, aluminum, with level gauge





**CUSTOMIZE  
AND HAVE  
THE MOST  
UNIQUE  
VESSEL  
AT SEA.**

*Hanover* 387

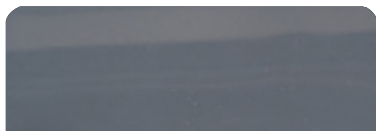
2026



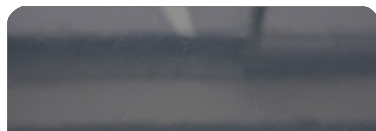


## EXTERIOR PAINT OPTIONS

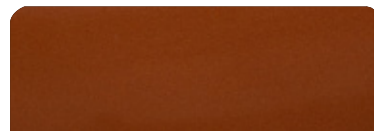
All options are available in either a high-gloss or matte finish.



Moonstone Gray



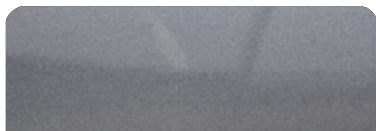
Pure Gray



Orange Pearl



Spring Blue



Orkney Gray



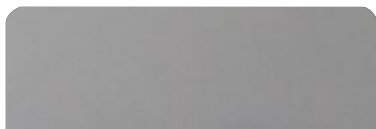
Ice Silver



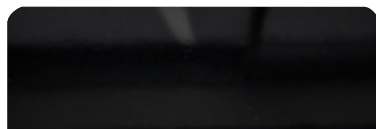
Moscou Red



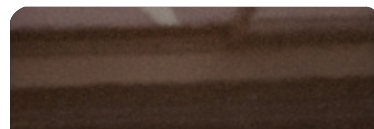
Heraldic Blue



Crayon Gray



Gales Black (Tuxedo)



Marrakesh Brown

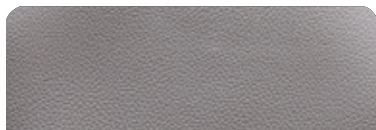


Macaw Blue

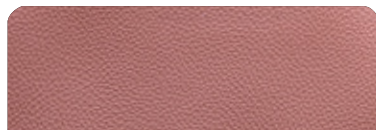




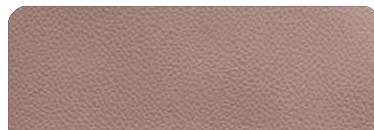
## UPHOLSTERY OPTIONS



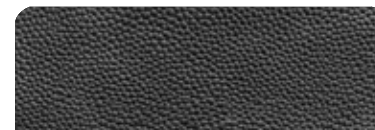
Fern



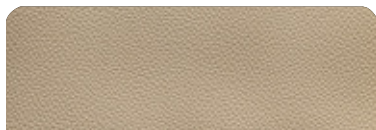
Terracota



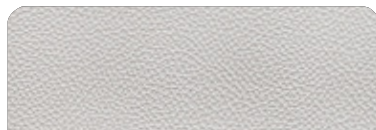
Caramello



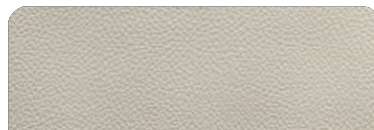
Black



Land Rover



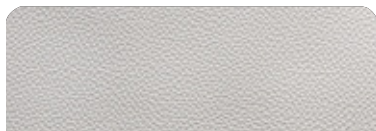
Taupe



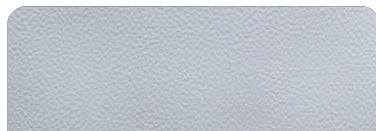
Ivory



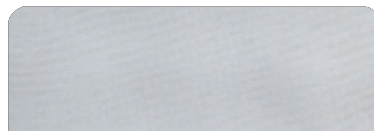
Orange



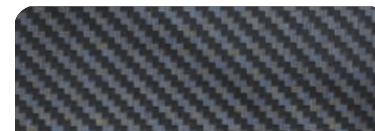
Off White



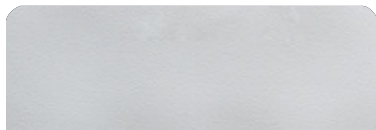
Gray



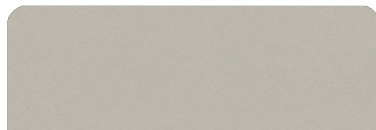
Silver



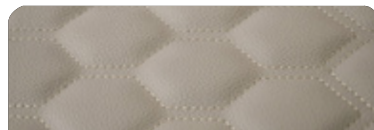
Carbon Fiber



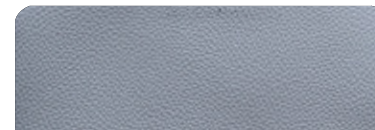
White



Beige



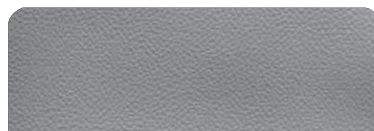
Matelasse Honeycomb



New Corolla



Blue



Corolla

*Hanover* 387

\*Additional options are available upon request.

2026





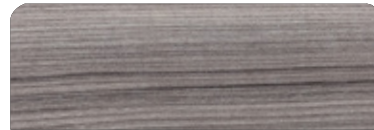
## FURNITURE VINYL OPTIONS



Salina



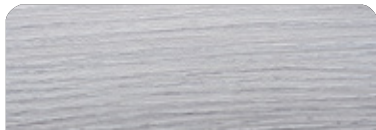
Massal



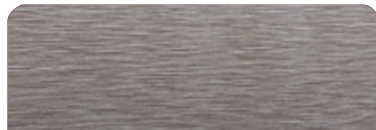
Cherry



Patina



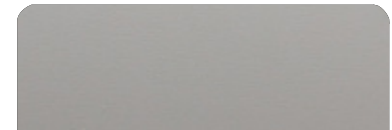
Alder



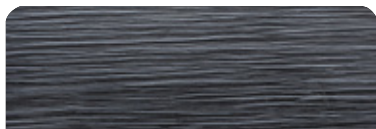
Bronze



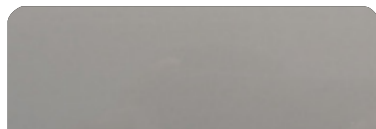
Freije



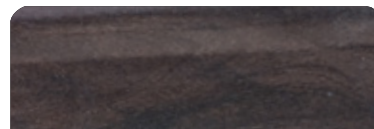
Taupe Super Matte



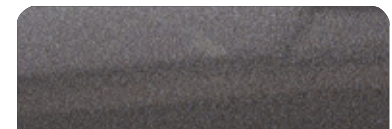
Black Line



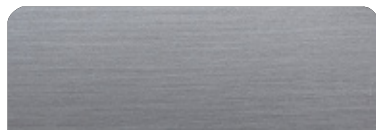
Taupe High Gloss



Canyon



Onix



Metallic



Gray Oak





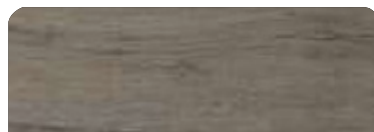
## INTERIOR FLOORING OPTIONS



Alba



Almond



Pine



Amendola



Sand



Cement



Imbuia



Cumaru



Gray



Duna



Vintage



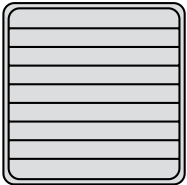
Kashmir



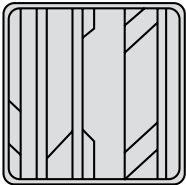


DECK FLOORING OPTIONS

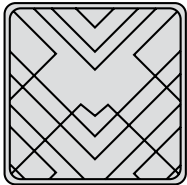
PATTERNS



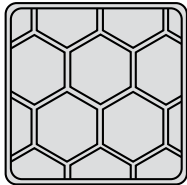
Classic



Aztec



Imperial

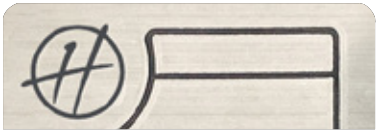


Beehive

EVA



Madeira



Gray



Ocher

SYNTHETIC  
TEAK



Madeira



Gray



Sand



# STANDARD EQUIPMENT

## HULL AND DECK

- 8" through bolted stainless steel cleats (06 count)
- 1 bow eye
- 2 eyes at the stern
- Stainless steel handrail with teak seat in the bow
- Self-draining floor
- 20" hatch in the bow from cabin to bow area
- 4 panoramic tempered glass windows
- 2 tilting tempered glass windows in the cockpit
- Tempered glass windshield and anodized aluminum frame
- 4-step telescopic ladder on platform
- Double bow solarium with adjustable backrest
- Handle stainless steel in the gourmet space
- Compartment for fenders on the platform floor
- 5 compartments below the cockpit seats
- Teak table
- Upholstery in anti-mold leather
- Gourmet space with top lid, sink, fridge, cutting board
- Hard-Top
- Storage, acrylic
- Acrylic cup holder in the cockpit
- Instrument panel that supports up to two 9" electronics with built-in compass
- Dual rider seat with standing or sitting
- Two seating areas in the cockpit
- Cooler
- Garbage Displacement
- Electric Opening Lateral Deck - Beach Club System

## HEAD

- Electric toilet with 22 gallon waste box, macerator pump and external nozzle
- Cabinet with two doors, sink in synthetic granite with bowl overlaid in tempered glass
- Air cabinet with two mirrored doors
- Decorative coating with glass inserts
- Shower with mixer
- Tempered glass box
- Shower box free standing height 6'2" /1,88 m
- Non-slip floor

## CABIN

- Acrylic access sliding door with lock and key
- Stainless steel staircase with 3 wide teak steps
- Ultra moisture resistant MDF furniture
- Kitchen with sink, synthetic granite top, space for microwave, induction stove, fridge, 3 drawers and two cabinets
- High Quality Laminate Flooring
- Decorative mirror on the bow
- U-shaped sofa for 3 people that converts into a double bed, with teak retractable table
- Double bed in the middle ship cabin
- Sofa in the middle ship cabin
- Coverings in waterproof fabric or anti-mold nautical leather
- Side walls covered with anti-mold foam and nautical leather
- Luxury layette kit with 10 pillows
- Free standing up of 9' in cabin center

## ENGINE ROOM

- Interior in gray gelcoat
- Non-slip sole, flat
- Insulation, acoustic and thermal
- Fire extinguisher
- Compartment, sealed, for air conditioning and batteries
- Exhaust fans (2)
- Engine room hatch
- Access door with gas pistons and lock
- Fuel tank, aluminum, with level gauge

## PUMPS AND TANKS

- Water tank, potable, 50 gal
- Fresh water pump
- Bilge pumps, engine room, with automatic switches
- Bilge pump, amidships, with automatic switch
- Collection box for shower with pump
- Showerhead, aft, with mixer

## ELECTRICAL

- Circuit breaker board
- Selector switch for pier/generator/inverter
- Electrical panel in the cockpit with special switches
- Navigation lights
- Anchoring lights
- Indirect LED lighting on the cockpit ceiling, bathroom, cabin, cabinet and under the sofas and dashboard
- LED spotlights on the cabin and cockpit ceiling
- Lighting in the engine room
- 120v sockets in the cockpit, cabin and bathroom
- 12v / USB sockets on the dashboard and in the cabin
- Shore power socket
- Individual master switches for accessory batteries and motors

## OPTIONS INCLUDED

- Synthetic teak or EVA on bow, cockpit and swim platform
- Sound system
- Anchor Windlass Electric System
- Anchor, 22 lbs, with chain
- VHF Radio w/ Antenna
- Sunroof, electric opening
- Holding tank with macerator
- Air conditioning, 12,000 BTU
- Generator
- Refrigerator,
- Trim tabs, electric
- Spotlights
- Shorepower
- Gourmet Area

A photograph showing two white Mercury Verado outboard motors mounted on the stern of a boat. The boat is moving across a body of water, creating a white wake. In the background, there is a shoreline with some industrial structures and a clear blue sky with scattered clouds. The text 'OUTBOARD & INBOARD OPTIONS' is overlaid on the left side of the image in a large, white, sans-serif font.

# OUTBOARD & INBOARD OPTIONS

*Hanover* 387

2026



2026 HANOVER 387

# OUTBOARD

## ESSENTIAL PACKAGE

## PREMIUM PACKAGE

Engine	Twin Mercury® DTS 300HP V8	Twin Mercury® Verado 350HP V10 w/ Joystick Piloting
GPS	GPS SIMRAD® Go7 (7")	GPS SIMRAD® Go9 (9")
Exterior Painting	1 Color (Hull)	2 Colors or More (Hull, Deck or HT)
A/C	12,000 BTU (Cabin)	12,000 + 6,000 BTU (Cabin - Cockpit)
Refrigerator	79L Refrigerator - 110V	Isotherm® / Dometic® Fridge 12V
VHF Radio	Uniden® VHF Radio w/ Antenna	SIMRAD® VHF Radio w/ Antenna
Power Generator	5KW	Kohler® 6KW
Sound System	Boss® Sound Kit + 6 JBL Marine Speakers + Amplifier	Fusion® Marine Sound Kit + 6 Marine Speakers + Amplifier
Electric Trim Tabs (Flaps)	✓	✓
Headlights With Remote (Cruising Spotlight)	✓	✓
EVA Flooring (Cockpit, Platform, Bow)	✓	✓
Electric Anchor Windlass System - 1000w + 10kg Anchor And 40m Chain (35+)	✓	✓
Windshield Wipers	✓	✓
Macerator Pump And Holding Tank	✓	✓
Shore Power System	✓	✓
Shore Power Cord 50A	✓	✓
Power Charger 100A	✓	✓
Heavy Duty Folding Table (Cockpit)	✓	✓
Galvanic Isolator (Electrical Protection)	✓	✓
Lines & Fenders	✓	✓
USCG Boating Safety Kit	✓	✓
Italian Steering Wheel	✓	✓
Design Items Set (Pillows, Bedding, Cushions, Towels, Accessories)	✓	✓
Microwave Oven		✓
LED Mirror Upgrade (Head)		✓
Hot Water System - Heater (Shower)		✓
Induction Electric Stove (Cabin)		✓
Kenyon® Electric Grill (Cockpit)		✓
LED 24" TV Set And Mounting		✓
Upholstered Stools/Chairs On Stern (Kit Of 2 Banquets)		✓

\$551,900

\$636,655

2026 HANOVER 387

# INBOARD

## ESSENTIAL PACKAGE

## PREMIUM PACKAGE

Engine	Twin Mercury® Mercruiser Axius 300HP B3	Twin Mercury® Mercruiser Axius 350hp W/ Joystick Piloting
GPS	GPS SIMRAD® Go7 (7")	GPS SIMRAD® Go9 (9")
Exterior Painting	1 Color (Hull)	2 Colors or More (Hull, Deck or HT)
A/C	12,000 BTU (Cabin)	12,000 + 6,000 BTU (Cabin - Cockpit)
Refrigerator	79L Refrigerator - 110V	Isotherm® / Dometic® Fridge 12V
VHF Radio	Uniden® VHF Radio w/ Antenna	SIMRAD® VHF Radio w/ Antenna
Power Generator	5KW	Kohler® 6KW
Sound System	Boss® Sound Kit + 6 JBL Marine Speakers + Amplifier	Fusion® Marine Sound Kit + 6 Marine Speakers + Amplifier
Electric Trim Tabs (Flaps)	✓	✓
Headlights With Remote (Cruising Spotlight)	✓	✓
EVA Flooring (Cockpit, Platform, Bow)	✓	✓
Electric Anchor Windlass System - 1000w + 10kg Anchor And 40m Chain (35+)	✓	✓
Windshield Wipers	✓	✓
Macerator Pump And Holding Tank	✓	✓
Shore Power System	✓	✓
Shore Power Cord 50A	✓	✓
Power Charger 100A	✓	✓
Heavy Duty Folding Table (Cockpit)	✓	✓
Galvanic Isolator (Electrical Protection)	✓	✓
Lines & Fenders	✓	✓
USCG Boating Safety Kit	✓	✓
Italian Steering Wheel	✓	✓
Design Items Set (Pillows, Bedding, Cushions, Towels, Accessories)	✓	✓
Microwave Oven		✓
LED Mirror Upgrade (Head)		✓
Hot Water System - Heater (Shower)		✓
Induction Electric Stove (Cabin)		✓
Kenyon® Electric Grill (Cockpit)		✓
LED 24" TV Set And Mounting		✓
Upholstered Stools/Chairs On Stern (Kit Of 2 Banquets)		✓

\$551,900

\$611,655



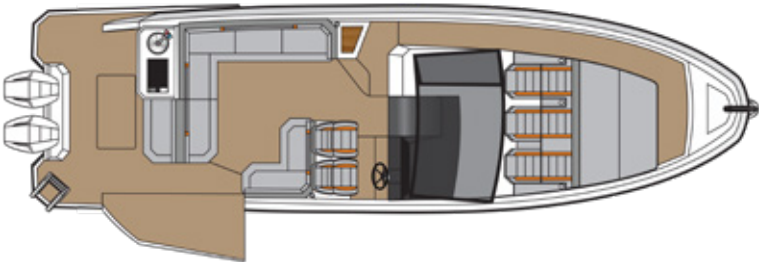
A man and two women are sitting on a boat, looking out at the water. The man is on the right, wearing a grey t-shirt and sunglasses. The two women are on the left, wearing black bikinis. They are sitting on a red cushioned bench. The water is blue and white with waves. The text "BUILD YOUR BOAT." is overlaid on the left side of the image.

# BUILD YOUR BOAT.

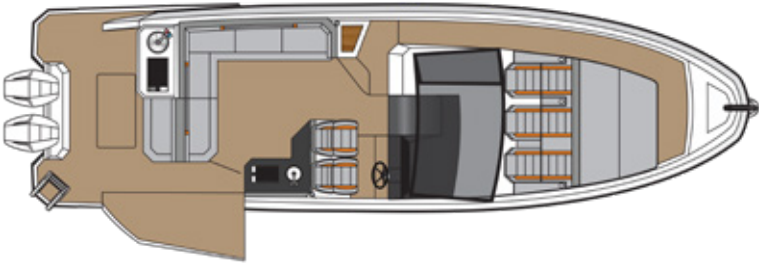
Choose Upgrades  
Tailored to Your Lifestyle.

# LAYOUT OPTIONS

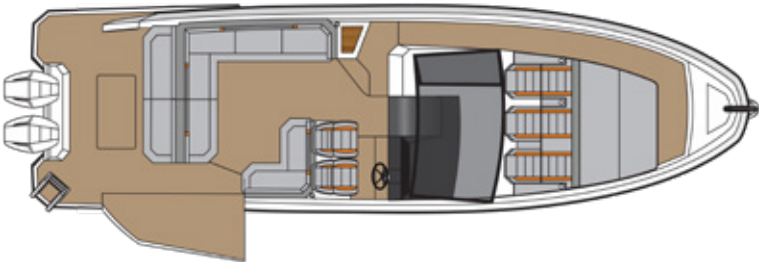
Aft-Grill



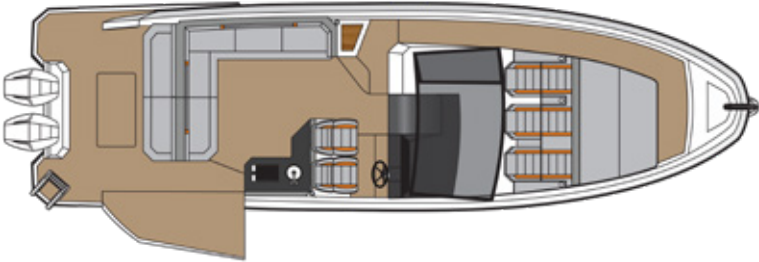
Starboard Kitchen  
and Aft-Grill



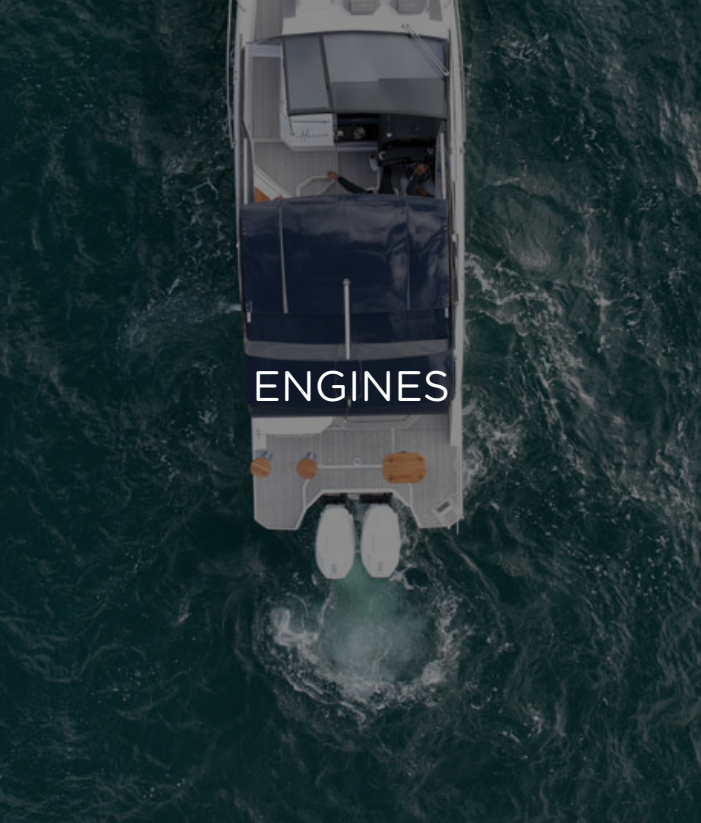
Aft-Sundeck



Starboard Kitchen  
and Aft-Sundeck







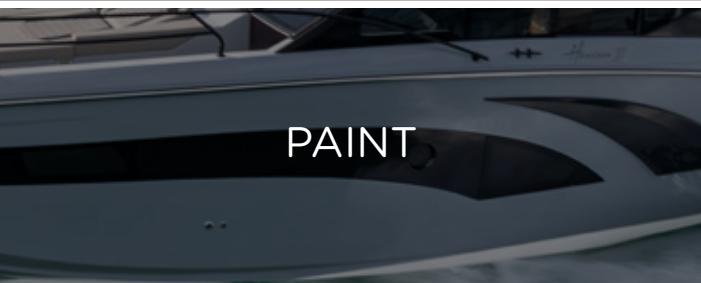
## BUILD YOUR BOAT BY SELECTING ITEMS FROM THE LIST BELOW

### INBOARD

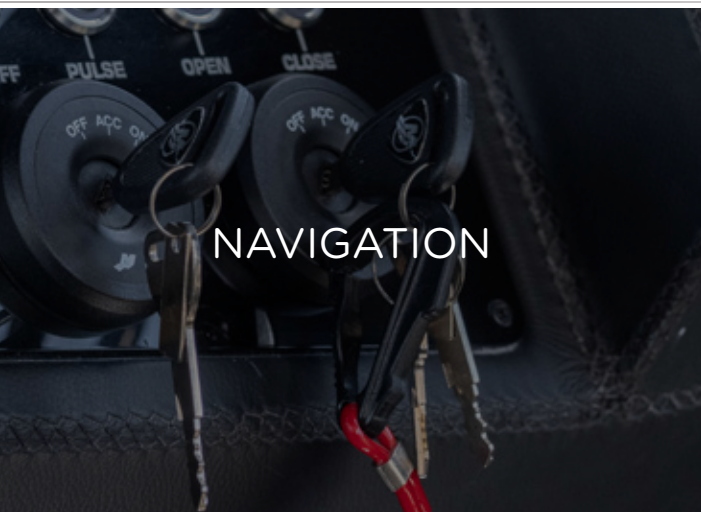
MERCURY TWIN MERCUISER AXIUS 300HP W/ JOYSTICK PILOTING  
MERCURY TWIN MERCUISER AXIUS 350HP W/ JOYSTICK PILOTING  
MERCURY TWIN MERCUISER AXIUS 380HP W/ JOYSTICK PILOTING  
MERCURY TWIN MERCUISER AXIUS 320HP - DIESEL W/ JOYSTICK PILOTING  
MERCURY TWIN MERCUISER AXIUS 350HP - DIESEL W/ JOYSTICK PILOTING  
VOLVO TWIN D4 320HP DIESEL  
VOLVO TWIN D6 380HP DIESEL

### OUTBOARD

MERCURY TWIN VERADO 300HP V8 OUTBOARDS W/ JOYSTICK PILOTING  
MERCURY TWIN VERADO 350HP V10 OUTBOARDS W/ JOYSTICK PILOTING  
MERCURY TWIN VERADO 400HP V10 OUTBOARDS W/ JOYSTICK PILOTING



EXTERNAL SINGLE PAINTING (1 COLOR, HULL)  
EXTERNAL DOUBLE PAINTING (2 OR MORE COLORS, HULL, DECK OR HT)  
EXTERNAL COMPLETE SPECIAL PAINT AND OR SPECIAL COLOR SELECTION  
BOTTOM PAINT - ANTIFOUL COPPERCOAT PAINT (415)



ELECTRIC TRIM TABS (FLAPS)  
HUMPHREE AUTOMATIC TRIM TABS  
ZIP WAKE AUTOMATIC TRIM TABS  
HEAD LIGHTS WITH REMOTE (CRUISING SPOTLIGHT)  
BOW THRUSTERS  
MC<sup>2</sup> QUICK GYRO STABILIZERS (X10)  
FLIR NIGHT VISION  
ITALIAN STEERING WHEEL



## FLOORING

EVA FLOORING (COCKPIT, PLATFORM, BOW)  
SYNTHETIC TEAK FLOORING (COCKPIT, PLATFORM, BOW)  
REAL TEAK FLOORING (COCKPIT, PLATFORM, BOW)



## AUDIO


BOSS SOUND KIT + 6 JBL MARINE SPEAKERS + AMPLIFIER  
FUSION MARINE SOUND SYSTEM KIT + 6 MARINE SPEAKERS + AMPLIFIER  
JBL MARINE SUBWOOFER  
JBL MARINE AMPLIFIER (EXTRA) (2 CHANNELS)  
FUSION MARINE AMPLIFIER (EXTRA) (2 CHANNELS)  
JBL MARINE SPEAKERS (EXTRA PAIR)  
JL AUDIO KIT 1 - MEDIA MASTER + 6 SPEAKERS + AMP  
JL AUDIO KIT 2 - MEDIA MASTER + 8 SPEAKERS + AMP + SUBWOOFER



## ELECTRONICS

GPS RAYMARINE ELEMENT 7S (7")  
GPS RAYMARINE AXIOM 9"  
GPS RAYMARINE AXIOM 12"  
GPS SIMRAD Go7 (7")  
GPS SIMRAD Go9 (9")  
GPS SIMRAD NSS 10" EVO4 (10")  
GPS SIMRAD NSS12 (12")  
GPS SIMRAD NSX15 ULTRAWIDE (15")  
GPS SIMRAD NSS16 (16")  
GPS GARMIN 9"  
GPS GARMIN 12"  
MERCURY VESSEL VIEW 4"  
MERCURY VESSEL VIEW 7"  
MERCURY VESSEL VIEW 9"  
SIMRAD RADAR HALO20+  
RAYMARINE RADAR QUANTUM II  
GARMIN RADAR  
UNIDEN VHF RADIO W/ ANTENNA  
SIMRAD VHF RADIO W/ ANTENNA





## GENERATOR

KOHLER 6KW POWER GENERATOR  
KOHLER 9KW POWER GENERATOR  
KOHLER 11KW POWER GENERATOR



## COVERS

SET OF WEATHERIZED EXTERIOR SEAT COVERS  
SNAP-ON CANVAS COVER  
EISENGLASS ENCLOSURE




## AIR CONDITIONING

A/C SYSTEM - 6,000 BTU (COCKPIT)  
A/C SYSTEM - 9,000 BTU (COCKPIT)  
A/C SYSTEM - 12,000 BTU (CABIN)  
A/C SYSTEM - 16,000 BTU (CABIN)



## UTILITIES

ELECTRIC ANCHOR WINDLASS SYSTEM - 1000W + 10KG ANCHOR AND 40M CHAIN (35+)  
WINDSHIELD WIPERS  
MACERATOR PUMP AND HOLDING TANK  
HOT WATER SYSTEM - HEATER (SHOWER)  
SHORE POWER SYSTEM  
SHORE POWER CORD 50A  
POWER CHARGER 100A  
POWER CHARGER/INVERTER 1800W  
POWER CHARGER/INVERTER 3000W  
INDUCTION ELECTRIC STOVE (CABIN)  
MICROWAVE OVEN  
79L REFRIGERATOR - 110V  
ISOTHERM 65L FRIDGE 12V  
REFRIGERATED 12V DRAWER (COCKPIT)  
ISOTHERM ICE MAKER  
KENYON ELECTRIC GRILL (STERN)  
LED 24" TV SET AND MOUNTING  
USCG BOATING SAFETY KIT  
LINES & FENDERS



## COMFORT & DESIGN

WOODEN STOOLS/CHAIRS ON STERN (KIT OF 2 BANQUETS)  
UPHOLSTERED STOOLS/CHAIRS ON STERN (KIT OF 2 BANQUETS)  
TEAK TABLE ON STERN (PLATFORM EXTRA TABLE)  
HEAVY DUTY FOLDING TABLE (COCKPIT)  
BOW TENT (BIMINI TOP ON BOW)  
HYDRAULIC UNDERWATER SWIM PLATFORM (INBOARDS ONLY)  
CERAMIC MARBLE DECORATIVE WALL (HEAD)  
MID SHIP CABIN ROOM ENCLOSURE (WOOD/DOOR)  
MAIN CABIN ROOM ENCLOSURE (WOOD/DOOR)  
MANUAL AFT SHADE (STOBAG)  
ELECTRIC AFT SHADE (STOBAG)  
ITALIAN PREMIUM UPHOLSTERY  
LEATHER COVER PANEL (COMPLETE DASHBOARD & HELM)  
ADJUSTABLE SINGLE SEAT - MANUAL  
ADJUSTABLE SINGLE SEAT - ELECTRIC  
LED MIRROR UPGRADE (BATHROOM)  
BLACK EXTERIOR RAILING  
DESIGN ITEMS SET (PILLOWS, BEDDINES, CUSHIONS, TOWELS, ACCESSORIES)



## ADDITIONAL UPGRADES

UNDERWATER LIGHTS (PAIR)  
RGB CHANGING LIGHTS (COCKPIT)  
GALVANIC ISOLATOR (ELECTRICAL PROTECTION)  
FIREBOY - ADVANCED FIRE SUPPRESSION SYSTEM  
LIVWELL (COCKPIT)  
ADJ ENGINE PROTECTION RAILING W/ ROD HOLDERS  
ADJ ENGINE PROTECTION RAILING  
PPF (PAINT PROTECTION FILM)  
YACHT CONTROLLER  
STARLINK  
ADDTL USB / ELECTRICAL OUTLETS  
REMOVABLE LADDER (BEACH CLUB)



For Pricing and more Options  
**Contact us now:**



[www.hanoveryachts.com](http://www.hanoveryachts.com)



[sales@hanoveryachts.com](mailto:sales@hanoveryachts.com)



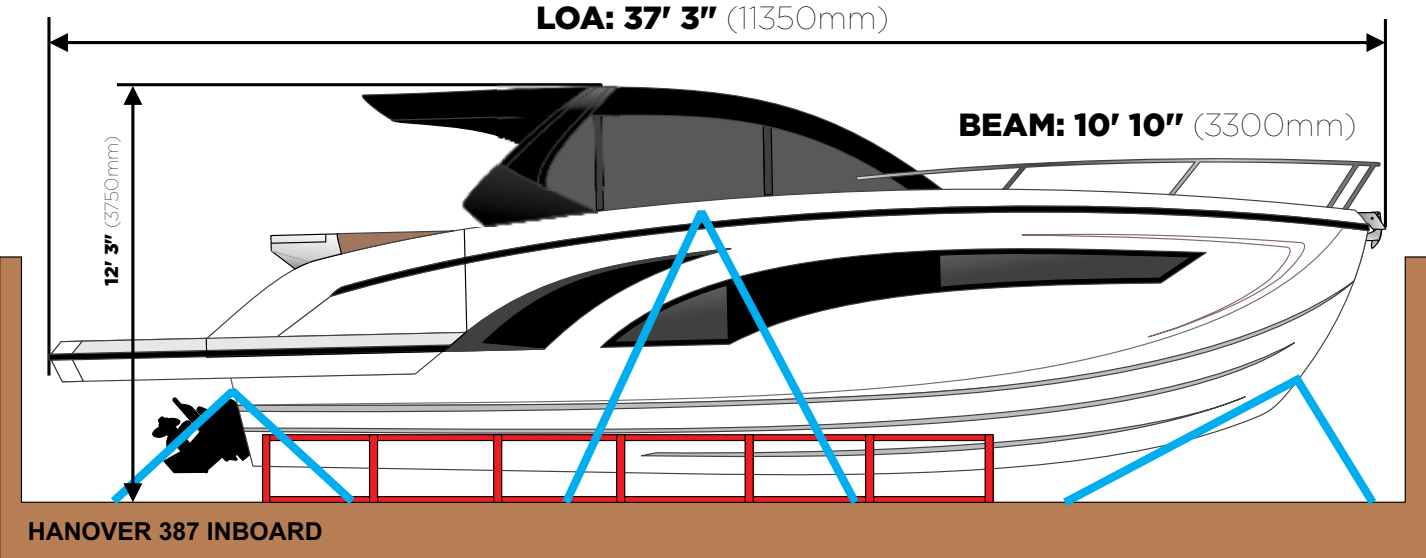
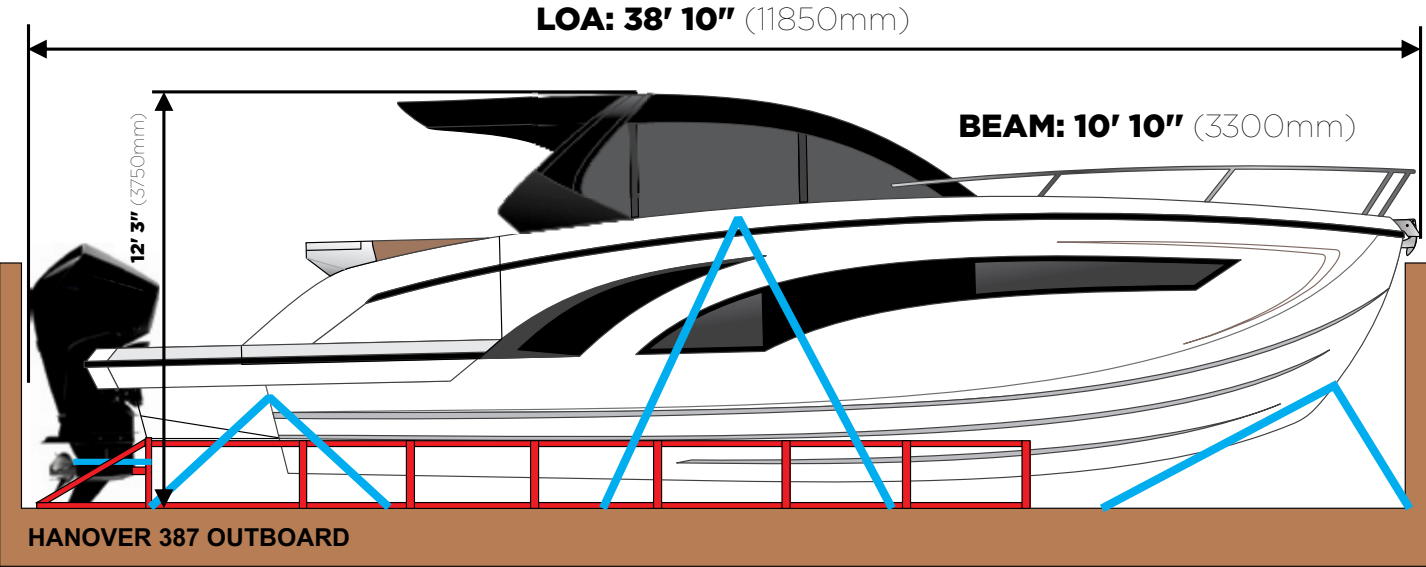
+1 954-355-9204



+1 (305) 452-0002



# SHIPPING DIMENSIONS



# HANOVER OWNERSHIP PROGRAM

---

At Hanover, we ensure an exciting stress-free experience from the moment you discover our brand.

## **STRESS-FREE PRICING**

Our entire lineup comes at our lowest price - no haggling needed. Leave the negotiations to used car salesmen, and enjoy a straightforward buying experience with us.

## **FIRST TRIP**

We've got you covered! You'll receive thorough training, and a captain will accompany you until you feel fully confident at the helm. Enjoy the experience like a pro!

## **MAINTENANCE AND WARRANTY**

Every Hanover vessel includes a 5-Year Premier Level Hull Warranty, 1 Year General, Mechanical and Components Warranty, All Accessories & Electrical Parts Under The Original Manufacturer's Warranty.

Cruise with complete confidence knowing you have a team of dedicated professionals at your service.

**Don't just own a boat, be part of the Hanover Lifestyle.**





*Hanover*

[www.hanoveryachts.com](http://www.hanoveryachts.com)