



*Hanover* / 265

hanoveryachts.com / 2026





The Hanover 265 is your gateway to a comfortable cabin boat, with the performance of a lightweight bowrider, ready to take on a beautiful day out on

the water. And here's the twist: when it's time to unwind, you can kick back and rest right on your stunning boat. The Hanover 265 has you covered.

*Hanover* 265



# STERN & COCKPIT & BOW



*Hanover* 265

2026



# CABIN & HEAD



*Hanover* 265



2026



# TECHNICAL SPECIFICATIONS



## LENGTH

Outboards: 26' 9" / 8.15 m  
Inboards: 25' 5" / 7.75 m



## BEAM

8' 6" / 2,60 m



## DRAFT

26" / 0.6 m



## DRY WEIGHT

3196 lbs / 1450 kg



## FUEL TANK CAPACITY

60 gal / 230 L



## WATER TANK CAPACITY

18 gal / 70 L



## DEADRISE

18°



## CAPACITY

10 day / 2 night



## CRUISING SPEED

25 mph / 40 kmh  
Range: 25 mph - 18 gal/h  
Idle: 6.5 mph - 2 gal/h (aprox.)



## WIDE OPEN THROTTLE

49 mph / 78 kmh  
Range: 49 mph - 36 gal/h



## BRIDGE CLEARANCE


8' 2" / 2.4m



*Hanover* 265

2026



A scenic view of a lake with a boat and rocky cliffs. The boat is a blue and white speedboat with yellow accents, moving across the water. The background features a large, rocky cliff on the left and a forested hill on the right. The sky is blue with some clouds.

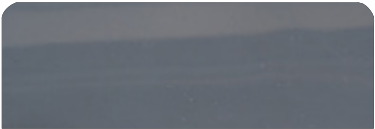
**CUSTOMIZE  
AND HAVE  
THE MOST  
UNIQUE  
VESSEL  
AT SEA.**





# EXTERIOR PAINT OPTIONS

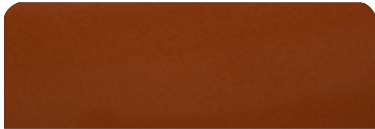
All options are available in either a high-gloss or matte finish.



Moonstone Gray



Pure Gray



Orange Pearl



Spring Blue



Orkney Gray



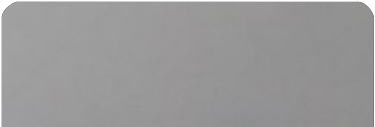
Ice Silver



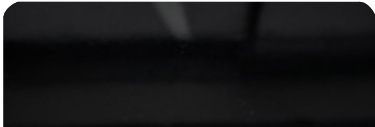
Moscou Red



Heraldic Blue



Crayon Gray



Gales Black (Tuxedo)



Marrakesh Brown

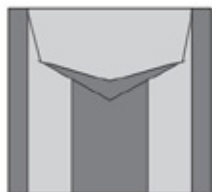


Macaw Blue

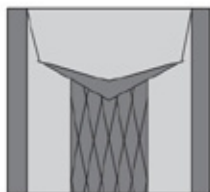


## UPHOLSTERY OPTIONS

### UPHOLSTERY DESIGN



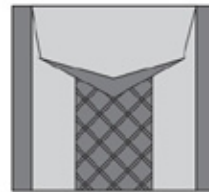
Classic



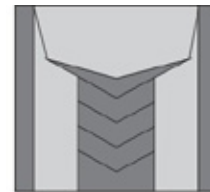
Diamond



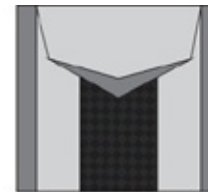
Vintage



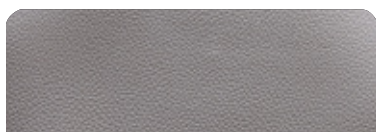
Elegant



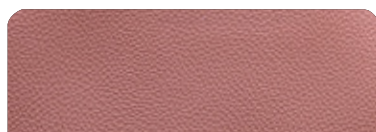
Sporty



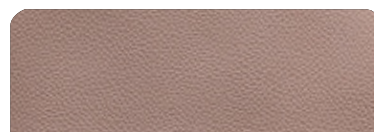
Carbon Fiber



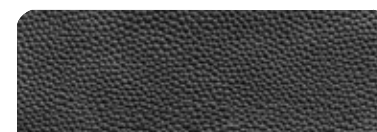
Fern



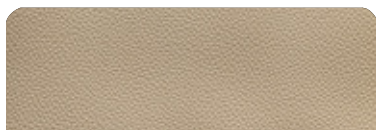
Terracotta



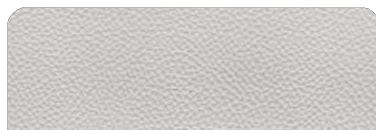
Caramello



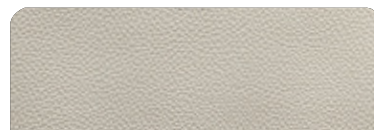
Black



Land Rover



Taupe



Ivory

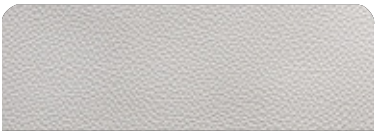


Orange

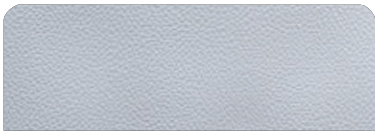




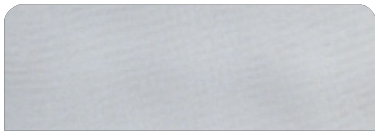
UPHOLSTERY OPTIONS



Off White



Gray



Silver



Carbon Fiber



White



Beige



Matelasse Honeycomb



New Corolla



Blue

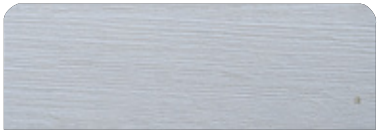


Corolla





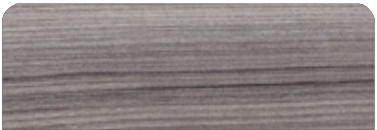
FURNITURE VINYL OPTIONS



Salina



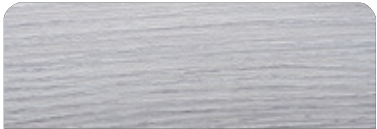
Massal



Cherry



Patina



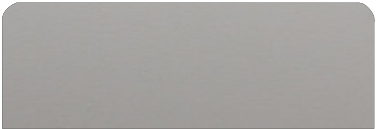
Alder



Bronze



Freije



Taupe Super Matte



Black Line



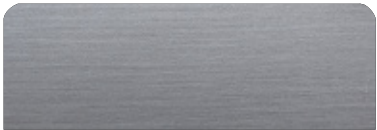
Taupe High Gloss



Canyon



Onix



Metallic



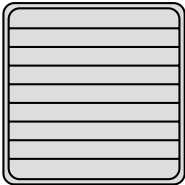
Gray Oak



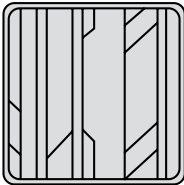


DECK FLOORING OPTIONS

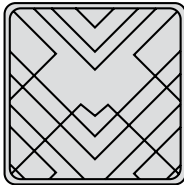
PATTERNS



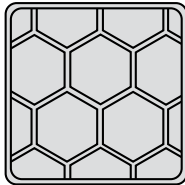
Classic



Aztec



Imperial

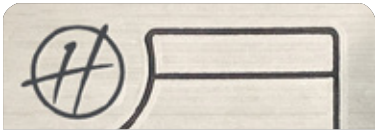


Beehive

EVA



Madeira



Gray



Ocher

SYNTHETIC  
TEAK



Madeira



Gray



Sand



# STANDARD EQUIPMENT

---

- External supply
- Acrylic Bar
- Pressurized water pump
- Refrigerator or Glacier Box
- Dry box
- Cart with caster
- Stern shower
- Stainless steel wedges
- Stainless ladder 03 stern steps
- Inner and outer padding (curved or woven)
- Anchor locker in the bow
- Stainless steel high guard
- Panoramic windows-bow (02)
- Mast light
- Navigation light
- Courtesy lights
- Internal 6-circuit breaker panel
- Electric panel
- Anchor store
- Aluminum and tempered glass windshield
- External sink
- Stern platform
- Coaster
- Acrylic deck access door
- Stainless steel bow thruster
- Stern solarium
- Water tank
- Fuel tank
- Toilet with manual flush





# OUTBOARD & INBOARD OPTIONS



*Hanover* 265

2026



2026 HANOVER 265

# OUTBOARD

ENGINES

## ESSENTIAL

PACKAGE

## PREMIUM

PACKAGE

Engine	Single Mercury® 225hp DTS V6	Single Mercury® 250hp DTS V8
GPS	GPS Raymarine® Element 7S (7")	GPS SIMRAD® Go9 (9")
Exterior Painting	1 Color (Hull)	2 Colors or More (Hull, Deck or HT)
VHF Radio	Uniden® VHF Radio w/ Antenna	SIMRAD® VHF Radio w/ Antenna
Sound System	Boss Sound Kit + 6 JBL Marine Speakers + Amplifier	Fusion® Marine Sound Kit + 6 Marine Speakers + Amplifier
Toilet	Manual	Electric
Power	Power Charger 100A	Power Charger/Inverter 1800W
Electric Trim Tabs (Flaps)	✓	✓
EVA Flooring (Cockpit, Platform, Bow)	✓	✓
Electric Anchor Windlass System - 1000w + 10kg Anchor And 40m Chain (35+)	✓	✓
Shore Power System	✓	✓
Shore Power Cord 30A	✓	✓
Power Charger 100A	✓	✓
Galvanic Isolator (Electrical Protection)	✓	✓
Lines & Fenders	✓	✓
USCG Boating Safety Kit	✓	✓
Italian Steering Wheel		✓
Bimini Top Cover		✓
Teak Table		✓
Macerator Pump And Holding Tank		✓
Folding System For Sunbeds (Bow)		✓
Design Items Set (Pillows, Bedding, Cushions, Towels, Accessories)		✓
Headlights With Remote (Cruising Spotlight)	\$161,900	\$186,135



2026 HANOVER 265

# INBOARD

## ENGINES

# ESSENTIAL

## PACKAGE

# PREMIUM

## PACKAGE

Engine	Single Mercury® Mercruiser 250hp	Single Mercury® Mercruiser 300hp
GPS	GPS Raymarine® Element 7S (7")	GPS SIMRAD® Go9 (9")
Exterior Painting	1 Color (Hull)	2 Colors or More (Hull, Deck or HT)
VHF Radio	Uniden® VHF Radio w/ Antenna	SIMRAD® VHF Radio w/ Antenna
Sound System	Boss Sound Kit + 6 JBL Marine Speakers + Amplifier	Fusion® Marine Sound Kit + 6 Marine Speakers + Amplifier
Toilet	Manual	Electric
Power	Power Charger 100A	Power Charger/Inverter 1800W
Electric Trim Tabs (Flaps)	✓	✓
EVA Flooring (Cockpit, Platform, Bow)	✓	✓
Electric Anchor Windlass System - 1000w + 10kg Anchor And 40m Chain (35+)	✓	✓
Shore Power System	✓	✓
Shore Power Cord 30A	✓	✓
Power Charger 100A	✓	✓
Galvanic Isolator (Electrical Protection)	✓	✓
Lines & Fenders	✓	✓
USCG Boating Safety Kit	✓	✓
Italian Steering Wheel		✓
Bimini Top Cover		✓
Teak Table		✓
Macerator Pump And Holding Tank		✓
Folding System For Sunbeds (Bow)		✓
Design Items Set (Pillows, Bedding, Cushions, Towels, Accessories)		✓
Headlights With Remote (Cruising Spotlight)	\$161,900	\$187,135



# BUILD YOUR BOAT.

Choose Upgrades  
Tailored to Your Lifestyle.

*Hanover* 265

2026



## BUILD YOUR BOAT BY SELECTING ITEMS FROM THE LIST BELOW



### ENGINES

#### INBOARD

MERCURY SINGLE MERCUISER 250HP  
MERCURY SINGLE MERCUISER 300HP  
MERCURY MERCUISER 270HP - DIESEL INBOARD  
MERCURY MERCUISER 320HP - DIESEL INBOARD

#### OUTBOARD

MERCURY SINGLE 225HP DTS V6 OUTBOARD  
MERCURY SINGLE 250HP DTS V8 OUTBOARD  
MERCURY SINGLE 300HP DTS V8 OUTBOARD



### PAINT

EXTERNAL SINGLE PAINTING (1 COLOR, HULL)  
EXTERNAL DOUBLE PAINTING (2 OR MORE COLORS, HULL, DECK OR HT)  
EXTERNAL COMPLETE SPECIAL PAINT AND OR SPECIAL COLOR SELECTION  
BOTTOM PAINT - ANTIFOUL COPPERCOAT PAINT



### NAVIGATION

ELECTRIC TRIM TABS (FLAPS)  
HUMPHREE AUTOMATIC TRIM TABS  
ZIP WAKE AUTOMATIC TRIM TABS  
SEAKEEPER RIDE AUTOMATIC TRIM TABS  
HEAD LIGHTS WITH REMOTE (CRUISING SPOTLIGHT)  
BOW THRUSTERS  
FLIR NIGHT VISION  
ITALIAN STEERING WHEEL






## FLOORING

EVA FLOORING (COCKPIT, PLATFORM, BOW)  
SYNTHETIC TEAK FLOORING (COCKPIT, PLATFORM, BOW)  
REAL TEAK FLOORING (COCKPIT, PLATFORM, BOW)



## AUDIO

BOSS SOUND KIT + 6 JBL MARINE SPEAKERS + AMPLIFIER  
JBL MARINE SPEAKERS (EXTRA PAIR)  
JBL MARINE SUBWOOFER  
JBL MARINE AMPLIFIER (EXTRA) (2 CHANNELS)  
FUSION MARINE AMPLIFIER (EXTRA) (2 CHANNELS)  
FUSION MARINE SOUND SYSTEM KIT + 6 MARINE SPEAKERS + AMPLIFIER  
JL AUDIO KIT 1 - MEDIA MASTER + 6 SPEAKERS + AMP  
JL AUDIO KIT 2 - MEDIA MASTER + 8 SPEAKERS + AMP + SUBWOOFER



## ELECTRONICS

GPS RAYMARINE ELEMENT 7S (7")  
GPS RAYMARINE AXIOM 9"  
GPS RAYMARINE AXIOM 12"  
GPS SIMRAD Go7 (7")  
GPS SIMRAD Go9 (9")  
GPS SIMRAD NSS 10" EVO4 (10")  
GPS SIMRAD NSS12 (12")  
GPS SIMRAD NSX15 ULTRA WIDE (15")  
GPS SIMRAD NSS16 (16")  
GPS GARMIN 9"  
GPS GARMIN 12"  
MERCURY VESSEL VIEW 4"  
MERCURY VESSEL VIEW 7"  
MERCURY VESSEL VIEW 9"  
SIMRAD RADAR HALO20+  
RAYMARINE RADAR QUANTUM II  
GARMIN RADAR  
UNIDEN VHF RADIO W/ ANTENNA  
SIMRAD VHF RADIO W/ ANTENNA



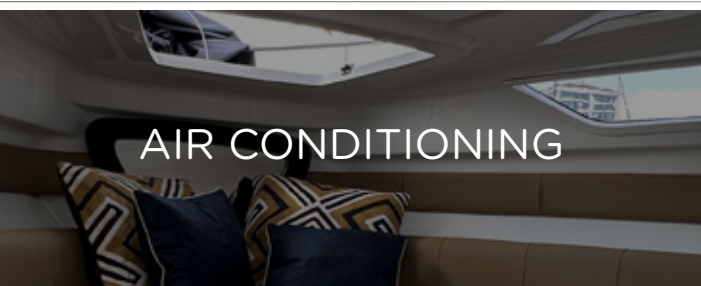
## GENERATOR

N/A



## COVERS

SET OF WEATHERIZED EXTERIOR SEAT COVERS  
SNAP-ON CANVAS COVER



## AIR CONDITIONING

N/A



## UTILITIES


ELECTRIC ANCHOR WINDLASS SYSTEM - 1000W + 10KG ANCHOR AND 40M CHAIN (35+)  
ELECTRIC TOILET  
MANUAL TOILET  
MACERATOR PUMP AND HOLDING TANK  
SHORE POWER SYSTEM  
SHORE POWER CORD 30A  
POWER CHARGER 100A  
POWER CHARGER/INVERTER 1800W  
POWER CHARGER/INVERTER 3000W  
ISOTHERM FRIDGE 12V (COCKPIT)  
USCG BOATING SAFETY KIT  
LINES & FENDERS





## COMFORT & DESIGN

- BIMINI TOP COVER
- BIMINI TOP COVER W/ STAINLESS STEEL STRUCTURE
- T TOP FOR HANOVER 255 - FIBERGLASS
- FOLDING SYSTEM FOR SUNBEDS (BOW)
- TEAK TABLE (COCKPIT)
- BOW TENT (BIMINI TOP ON BOW)
- MANUAL AFT SHADE (STOBAG)
- ELECTRIC AFT SHADE (STOBAG)
- BLACK EXTERIOR RAILING
- DESIGN ITEMS SET (PILLOWS, BEDDING, CUSHIONS, TOWELS, ACCESSORIES)
- BATTERY OPERATED A/C - 5,000 BTU (CABIN)



## ADDITIONAL UPGRADES

- UNDERWATER LIGHTS (PAIR)
- RGB CHANGING LIGHTS (COCKPIT)
- GALVANIC ISOLATOR (ELECTRICAL PROTECTION)
- LIVEWELL (COCKPIT)
- ADJ ENGINE PROTECTION RAILING W/ ROD HOLDERS
- ADJ ENGINE PROTECTION RAILING
- PPF (PAINT PROTECTION FILM)
- WATER TOYS / SKI TOW
- WATER TOYS / SKI TOW TOWER
- STARLINK
- ADDTL USB / ELECTRICAL OUTLETS



For Pricing and more Options  
**Contact us now:**



[www.hanoveryachts.com](http://www.hanoveryachts.com)



[sales@hanoveryachts.com](mailto:sales@hanoveryachts.com)



+1 954-355-9204



+1 (305) 452-0002



# HANOVER OWNERSHIP PROGRAM

---

At Hanover, we ensure an exciting stress-free experience from the moment you discover our brand.

## **STRESS-FREE PRICING**

Our entire lineup comes at our lowest price - no haggling needed. Leave the negotiations to used car salesmen, and enjoy a straightforward buying experience with us.

## **FIRST TRIP**

We've got you covered! You'll receive thorough training, and a captain will accompany you until you feel fully confident at the helm. Enjoy the experience like a pro!

## **MAINTENANCE AND WARRANTY**

Every Hanover vessel includes a 5-Year Premier Level Hull Warranty, 1 Year General, Mechanical and Components Warranty, All Accessories & Electrical Parts Under The Original Manufacturer's Warranty.

Cruise with complete confidence knowing you have a team of dedicated professionals at your service.

**Don't just own a boat, be part of the Hanover Lifestyle.**





*Hanover*

[www.hanoveryachts.com](http://www.hanoveryachts.com)