



Hanover / 447

hanoveryachts.com / 2025



Elevate your luxury lifestyle to new heights with a vessel where every detail is meticulously

crafted to make your time on the water as comfortable as being at home but better!

Hanover 447

AFT & COCKPIT



Hanover 447

2025

GALLEY, CABINS, & HEAD.



Hanover 447

2025

BOW & STERN.



Hanover 447



2025

TECHNICAL SPECIFICATIONS



LENGTH

Outboards: 45' 3" / 13.80 m
Inboards: 44' 3" / 13.50 m



BEAM

13' 3" / 4,05 m



DRAFT

3' 11" / 1.20 m



DRY WEIGHT

30,423 lbs / 13,800 kg



FUEL TANK CAPACITY

396 gal / 1500 L



WATER TANK CAPACITY

132 gal / 500 L



HOLDING TANK

20 gal / 75 L



CAPACITY

18 day / 5 Night



CRUISING SPEED

23 mph / 37 kmh
Range: 15 gal/h



WIDE OPEN THROTTLE

49 mph / 78 kmh
Range: 37 gal/h



DEADRISE

17°



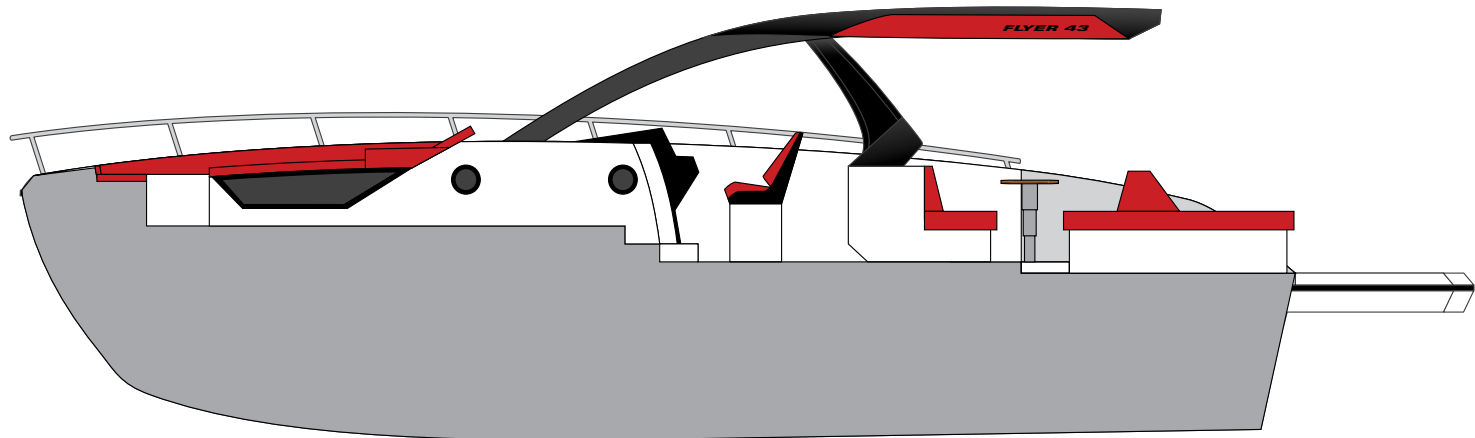
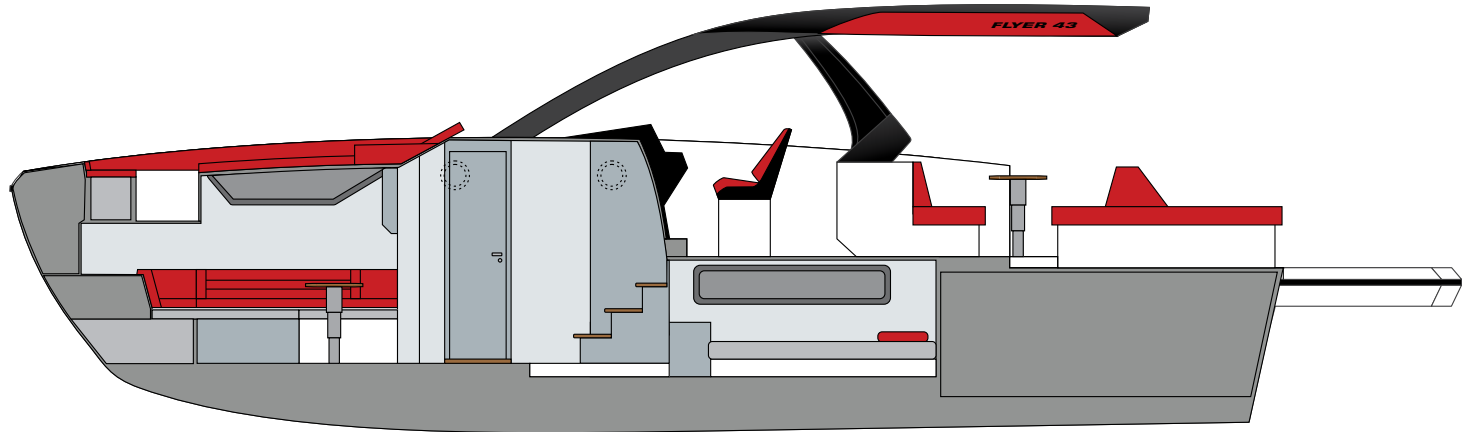
BRIDGE CLEARANCE

11' 6" / 3.5 m



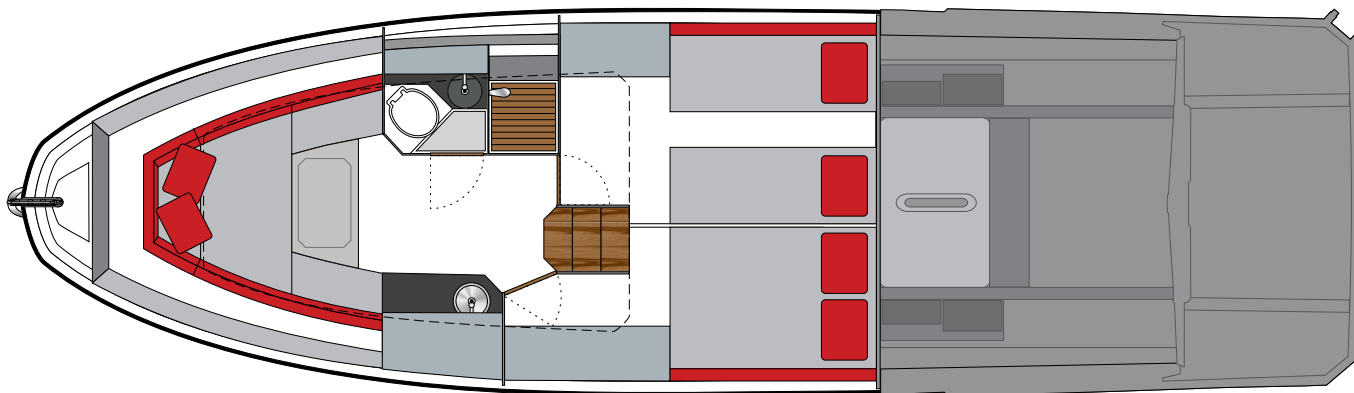
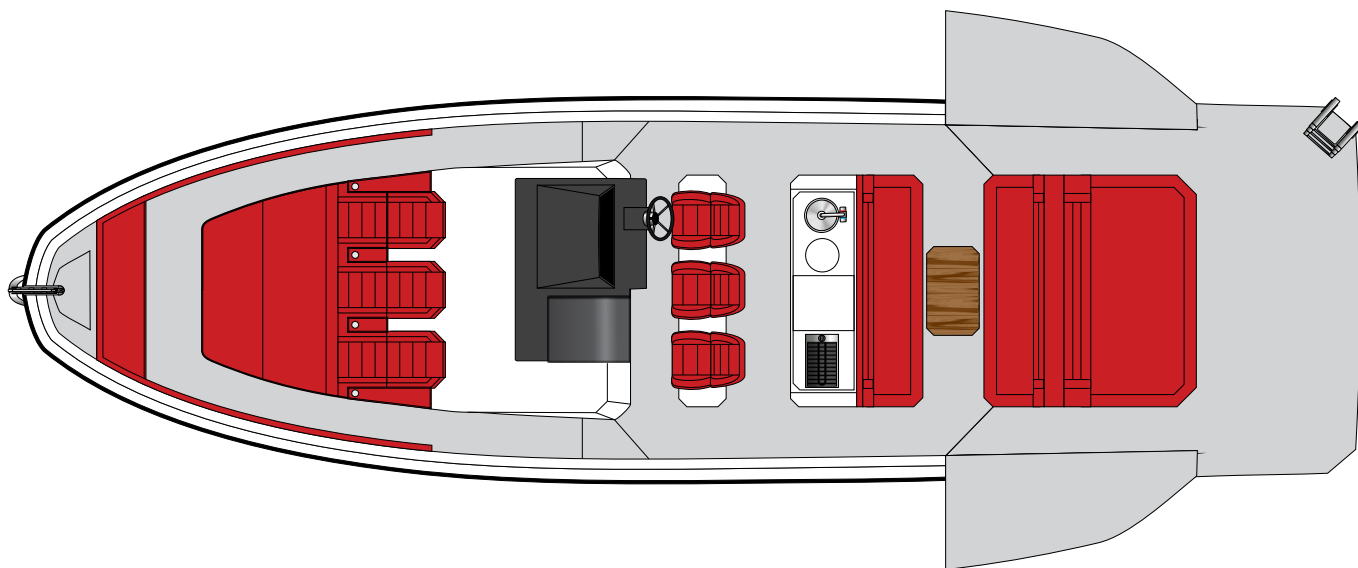
FLOORING PLAN

SIDE VIEW



FLOORING PLAN

TOP VIEW



**CUSTOMIZE
AND HAVE
THE MOST
UNIQUE
VESSEL
AT SEA.**



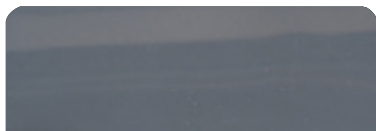
Hanover 447

2025

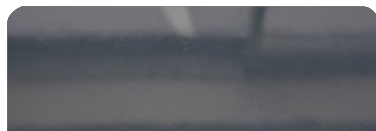


EXTERIOR PAINT OPTIONS

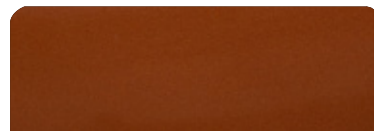
All options are available in either a high-gloss or matte finish.



Moonstone Gray



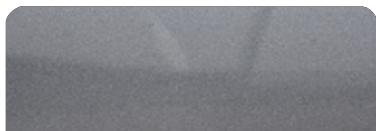
Pure Gray



Orange Pearl



Spring Blue



Orkney Gray



Ice Silver



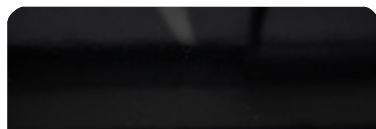
Moscou Red



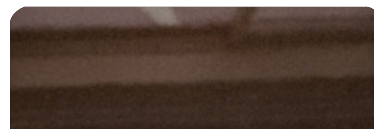
Heraldic Blue



Crayon Gray



Gales Black (Tuxedo)



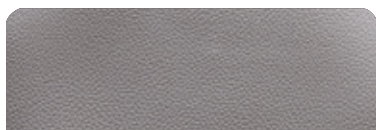
Marrakesh Brown



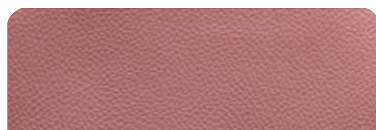
Macaw Blue



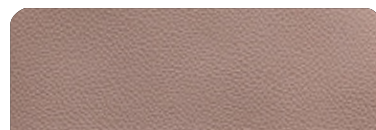
UPHOLSTERY OPTIONS



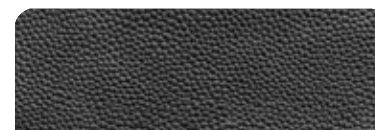
Fern



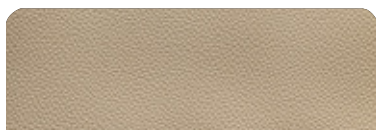
Terracota



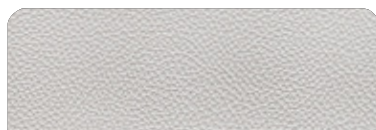
Caramello



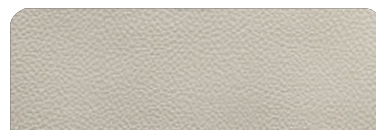
Black



Land Rover



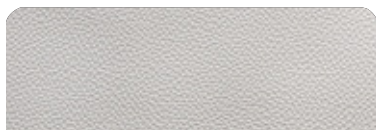
Taupe



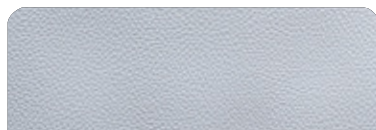
Ivory



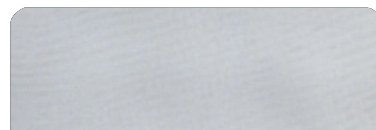
Orange



Off White



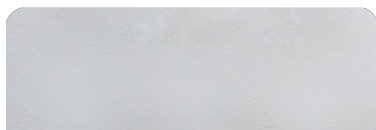
Gray



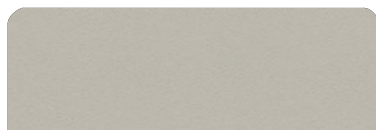
Silver



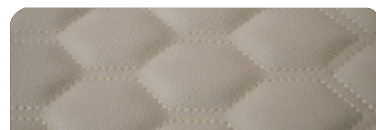
Carbon Fiber



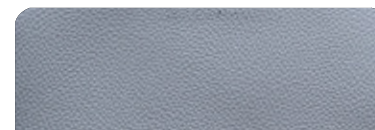
White



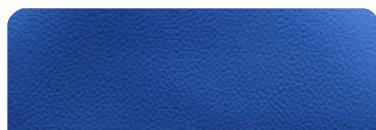
Beige



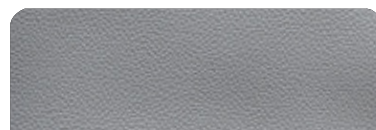
Matelasse Honeycomb



New Corolla

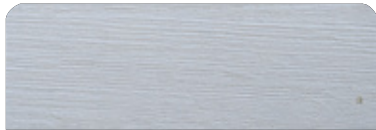


Blue



Corolla

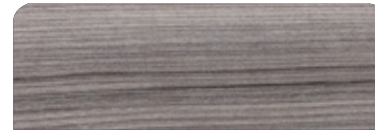
FURNITURE VINYL OPTIONS



Salina



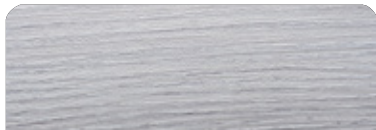
Massal



Cherry



Patina



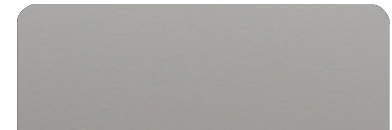
Alder



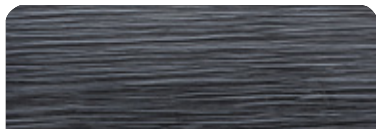
Bronze



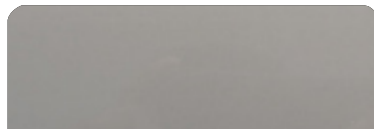
Freije



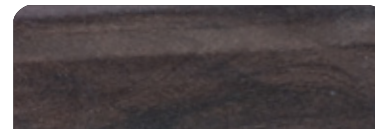
Taupe Super Matte



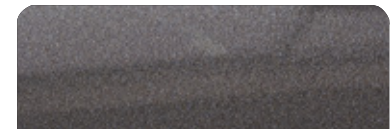
Black Line



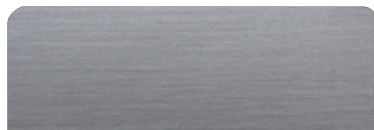
Taupe High Gloss



Canyon



Onix



Metallic



Gray Oak



INTERIOR FLOORING OPTIONS



Alba



Almond



Pine



Amendola



Sand



Cement



Imbuia



Cumaru



Gray



Duna



Vintage

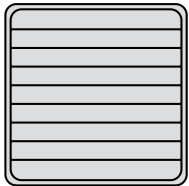


Kashmir

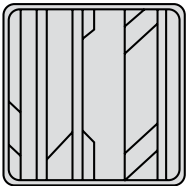


DECK FLOORING OPTIONS

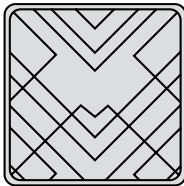
PATTERNS



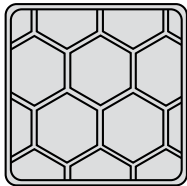
Classic



Aztec



Imperial



Beehive

EVA



Madeira

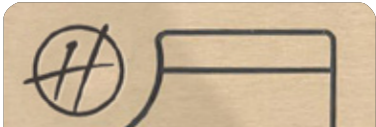


Gray



Ocher

SYNTHETIC
TEAK



Madeira



Gray



Sand

An aerial photograph of a Hanover 447 motorboat on green water. The boat features a large swim platform with a wooden deck, a large orange cushioned seating area, and three white outboard engines at the stern. The text "OUTBOARD & INBOARD OPTIONS" is overlaid on the left side of the image.

OUTBOARD & INBOARD OPTIONS

Hanover 447

2025

2025 HANOVER 447

OUTBOARD

ENGINES

ESSENTIAL

PACKAGE

PREMIUM

PACKAGE

Engine	Mercury® Twin Verado 400HP V10 W/ Joystick Piloting	Mercury® Triple Verado 300HP V8 W/ Joystick Piloting
GPS	GPS Simrad® NSX15 Ultrawide (15")	GPS Simrad® NSX15 Ultrawide (15")
Exterior Painting	1 Color (Hull)	2 Colors or More (Hull, Deck or HT)
A/C	12,000 BTU (Main Cabin + Aft Cabin)	12,000 BTU (Main Cabin + Aft Cabin)
Refrigerator	Refrigerator - 110V	Isotherm® 65L Fridge 12V
VHF Radio	Uniden® VHF Radio w/ Antenna	SIMRAD® VHF Radio w/ Antenna
Fusion® Sound System + 6 Marine Speakers + Amplifier	✓	✓
Power Generator Kohler® 9KVA	✓	✓
Complete EVA Flooring	✓	✓
Vynilic Flooring (Cabin)	✓	✓
Anchor Windlass Electric System	✓	✓
Electric Trim Tabs (Flaps)	✓	✓
Fenders & Lines	✓	✓
USCG Boating Safety Kit	✓	✓
Shore Power + Shore Cord 50A	✓	✓
Macerator Pump and Holding Tank	✓	✓
Galvanic Isolator (Electrical Protection)	✓	✓
Windshield Wipers	✓	✓
Heavy Duty Folding Table (Cockpit)	✓	✓
Power Charger / Complete Electric System	✓	✓
Italian Steering Wheel	✓	✓
Headlights w/ Remote (Cruising Spotlight)	✓	✓
Hot Water System - Heater (Shower)	✓	✓
Induction Electric Stove (Cabin)	✓	✓
Electric Aft Shade (Stobag)	✓	✓
Bow Tent (Bimini Top On Bow)	✓	✓
Design Items Set (Pillows, Beddings, Cushions, Towels, Accessories)	✓	✓
Kenyon Electric Grill (Stern)	✓	✓

\$985,645

\$1,059,585

2025 HANOVER 447

INBOARD

ENGINES

ESSENTIAL

PACKAGE

PREMIUM

PACKAGE

Engine	Mercury Twin Axis 380HP W/ Joystick Piloting	Volvo® Twin D6 440HP Diesel
GPS	GPS Simrad® NSX15 Ultrawide (15")	GPS Simrad® NSX15 Ultrawide (15")
Exterior Painting	1 Color (Hull)	2 Colors or More (Hull, Deck or HT)
A/C	12,000 BTU (Main Cabin + Aft Cabin)	12,000 BTU (Main Cabin + Aft Cabin)
Refrigerator	Refrigerator - 110V	Isotherm® 65L Fridge 12V
VHF Radio	Uniden® VHF Radio w/ Antenna	SIMRAD® VHF Radio w/ Antenna
Fusion® Sound System + 6 Marine Speakers + Amplifier	✓	✓
Power Generator Kohler® 9KVA	✓	✓
Complete EVA Flooring	✓	✓
Vynilic Flooring (Cabin)	✓	✓
Anchor Windlass Electric System	✓	✓
Electric Trim Tabs (Flaps)	✓	✓
Fenders & Lines	✓	✓
USCG Boating Safety Kit	✓	✓
Shore Power + Shore Cord 50A	✓	✓
Macerator Pump and Holding Tank	✓	✓
Galvanic Isolator (Electrical Protection)	✓	✓
Windshield Wipers	✓	✓
Heavy Duty Folding Table (Cockpit)	✓	✓
Power Charger / Complete Electric System	✓	✓
Italian Steering Wheel	✓	✓
Headlights w/ Remote (Cruising Spotlight)	✓	✓
Hot Water System - Heater (Shower)	✓	✓
Induction Electric Stove (Cabin)	✓	✓
Electric Aft Shade (Stobag)	✓	✓
Bow Tent (Bimini Top On Bow)	✓	✓
Design Items Set (Pillows, Beddings, Cushions, Towels, Accessories)	✓	✓
Kenyon Electric Grill (Stern)	✓	✓

\$921,595

\$1,147,585

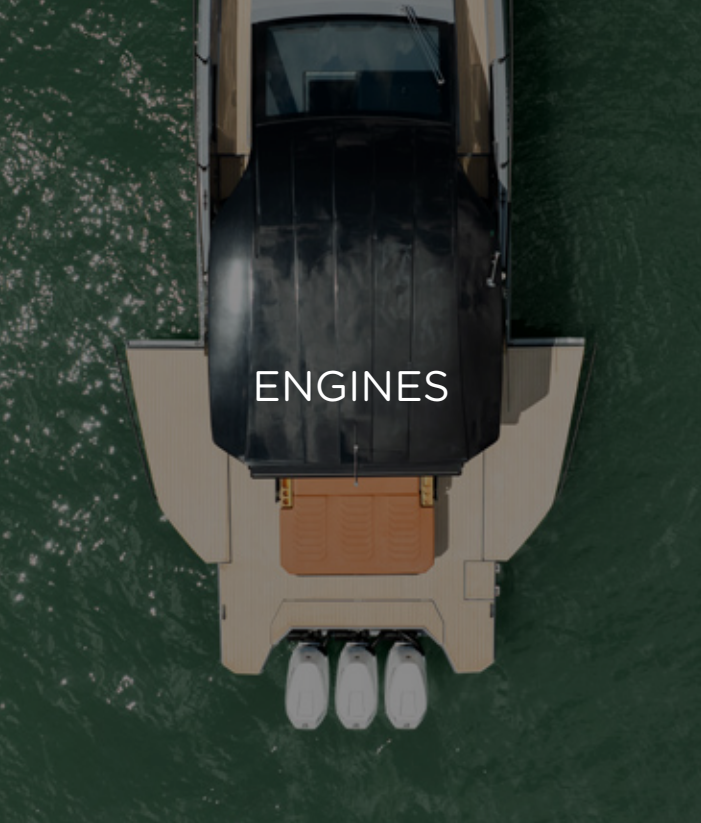
BUILD YOUR BOAT.

Choose Upgrades
Tailored to Your Lifestyle.



Hanover 447

2025



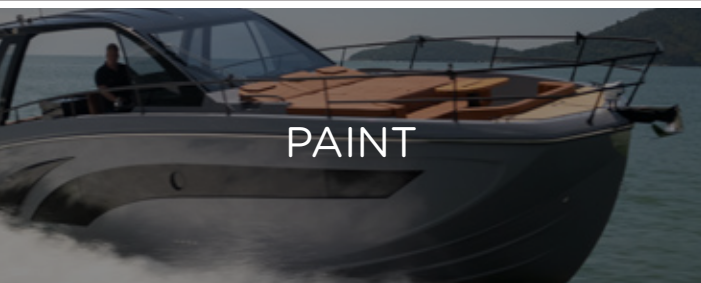
BUILD YOUR BOAT BY SELECTING ITEMS FROM THE LIST BELOW

INBOARD

MERCURY TWIN MERCUISER AXIUS 350HP W/ JOYSTICK PILOTING
MERCURY TWIN MERCUISER AXIUS 380HP W/ JOYSTICK PILOTING
VOLVO TWIN D6 380HP DIESEL
VOLVO TWIN D6 400HP DIESEL
VOLVO TWIN IPS 600 440HP DIESEL W/ JOYSTICK
VOLVO TWIN IPS 600 650HP DIESEL W/ JOYSTICK

OUTBOARD

MERCURY TWIN VERADO 350HP V10 W/ JOYSTICK PILOTING
MERCURY TWIN VERADO 400HP V10 W/ JOYSTICK PILOTING
MERCURY TWIN VERADO 600HP V12 W/ JOYSTICK PILOTING
MERCURY TRIPLE VERADO 300HP V8 W/ JOYSTICK PILOTING
MERCURY TRIPLE VERADO 300R RACING W/ JOYSTICK PILOTING
MERCURY TRIPLE VERADO 350HP V10 W/ JOYSTICK PILOTING
MERCURY TRIPLE VERADO 400HP V10 OUTBOARDS W/ JOYSTICK PILOTING



EXTERNAL SINGLE PAINTING (1 COLOR, HULL)
EXTERNAL DOUBLE PAINTING (2 OR MORE COLORS, HULL, DECK OR HT)
EXTERNAL COMPLETE SPECIAL PAINT AND OR SPECIAL COLOR SELECTION
BOTTOM PAINT - ANTIFOUL COPPERCOAT PAINT



ELECTRIC TRIM TABS (FLAPS)
HUMPHREE AUTOMATIC TRIM TABS
ZIP WAKE AUTOMATIC TRIM TABS
HEAD LIGHTS WITH REMOTE (CRUISING SPOTLIGHT)
BOW THRUSTERS
MC² QUICK GYRO STABILIZERS (X10)
FLIR NIGHT VISION
ITALIAN STEERING WHEEL



FLOORING

EVA FLOORING (COCKPIT, PLATFORM, BOW)
SYNTHETIC TEAK FLOORING (COCKPIT, PLATFORM, BOW)
REAL TEAK FLOORING (COCKPIT, PLATFORM, BOW)




AUDIO

BOSS SOUND KIT + 6 JBL MARINE SPEAKERS + AMPLIFIER
FUSION MARINE SOUND SYSTEM KIT + 6 MARINE SPEAKERS + AMPLIFIER
JBL MARINE SUBWOOFER
JBL MARINE AMPLIFIER (EXTRA) (2 CHANNELS)
FUSION MARINE AMPLIFIER (EXTRA) (2 CHANNELS)
JBL MARINE SPEAKERS (EXTRA PAIR)
JL AUDIO KIT 1 - MEDIA MASTER + 6 SPEAKERS + AMP
JL AUDIO KIT 2 - MEDIA MASTER + 8 SPEAKERS + AMP + SUBWOOFER



ELECTRONICS

GPS RAYMARINE ELEMENT 7S (7")
GPS RAYMARINE AXIOM 9"
GPS RAYMARINE AXIOM 12"
GPS SIMRAD Go7 (7")
GPS SIMRAD Go9 (9")
GPS SIMRAD NSS 10" EVO4 (10")
GPS SIMRAD NSS12 (12")
GPS SIMRAD NSX15 ULTRAWIDE (15")
GPS SIMRAD NSS16 (16")
GPS GARMIN 9"
GPS GARMIN 12"
MERCURY VESSEL VIEW 4"
MERCURY VESSEL VIEW 7"
MERCURY VESSEL VIEW 9"
SIMRAD RADAR HALO20+
RAYMARINE RADAR QUANTUM II
GARMIN RADAR
UNIDEN VHF RADIO W/ ANTENNA
SIMRAD VHF RADIO W/ ANTENNA



GENERATOR

KOHLER 6KW POWER GENERATOR
KOHLER 9KW POWER GENERATOR
KOHLER 11KW POWER GENERATOR




COVERS

SET OF WEATHERIZED EXTERIOR SEAT COVERS
SNAP-ON CANVAS COVER
EISENGLASS ENCLOSURE




AIR CONDITIONING

A/C SYSTEM - 6,000 BTU (COCKPIT)
A/C SYSTEM - 9,000 BTU (COCKPIT)
A/C SYSTEM - 12,000 BTU (CABIN)
A/C SYSTEM - 16,000 BTU (CABIN)



UTILITIES

ELECTRIC ANCHOR WINDLASS SYSTEM - 1000W + 10KG ANCHOR AND 40M CHAIN (35+)
WINDSHIELD WIPERS
MACERATOR PUMP AND HOLDING TANK
HOT WATER SYSTEM - HEATER (SHOWER)
SHORE POWER SYSTEM
SHORE POWER CORD 50A
POWER CHARGER 100A
INDUCTION ELECTRIC STOVE (CABIN)
MICROWAVE OVEN
79L REFRIGERATOR - 110V
ISOTHERM 65L FRIDGE 12V
REFRIGERATED 12V DRAWER (COCKPIT)
ISOTHERM ICE MAKER (CABIN)
KENYON ELECTRIC GRILL (STERN)
LED 24" TV SET AND MOUNTING
ELECTRONIC OPENING TV SET (COCKPIT)
USCG BOATING SAFETY KIT
LINES & FENDERS



COMFORT & DESIGN

ITALIAN PREMIUM UPHOLSTERY
WOODEN STOOLS/CHAIRS ON STERN (KIT OF 2 BANQUETS)
UPHOLSTERED STOOLS/CHAIRS ON STERN (KIT OF 2 BANQUETS)
TEAK TABLE ON STERN (PLATFORM EXTRA TABLE)
HEAVY DUTY FOLDING TABLE (COCKPIT)
BOW TENT (BIMINI TOP ON BOW)
HYDRAULIC UNDERWATER SWIM PLATFORM (**INBOARDS ONLY**)
CERAMIC MARBLE DECORATIVE WALL (HEAD)
MID SHIP CABIN ROOM ENCLOSURE (WOOD/DOOR)
MAIN CABIN ROOM ENCLOSURE (WOOD/DOOR)
MANUAL AFT SHADE (STOBAG)
ELECTRIC AFT SHADE (STOBAG)
GLASS DOOR ENCLOSURE FOR COCKPIT
LEATHER COVER PANEL (COMPLETE DASHBOARD & HELM)
ADJUSTABLE SINGLE SEAT - MANUAL
ADJUSTABLE SINGLE SEAT - ELECTRIC
LED MIRROR UPGRADE (BATHROOM)
BLACK EXTERIOR RAILING
DESIGN ITEMS SET (PILLOWS, BEDDING, CUSHIONS, TOWELS, ACCESSORIES)



ADDITIONAL UPGRADES

UNDERWATER LIGHTS (PAIR)
RGB CHANGING LIGHTS (COCKPIT)
GALVANIC ISOLATOR (ELECTRICAL PROTECTION)
FIREBOY - ADVANCED FIRE SUPPRESSION SYSTEM
LIVWELL (COCKPIT)
ADJ ENGINE PROTECTION RAILING W/ ROD HOLDERS
ADJ ENGINE PROTECTION RAILING
PPF (PAINT PROTECTION FILM)
YACHT CONTROLLER
STARLINK
ADDTL USB / ELECTRICAL OUTLETS



For Pricing and more Options
Contact us now:



www.hanoveryachts.com



sales@hanoveryachts.com



+1 954-355-9204



+1 (305) 452-0002

HANOVER OWNERSHIP PROGRAM

At Hanover, we ensure an exciting stress-free experience from the moment you discover our brand.

STRESS-FREE PRICING

Our entire lineup comes at our lowest price - no haggling needed. Leave the negotiations to used car salesmen, and enjoy a straightforward buying experience with us.

FIRST TRIP

We've got you covered! You'll receive thorough training, and a captain will accompany you until you feel fully confident at the helm. Enjoy the experience like a pro!

MAINTENANCE AND WARRANTY

Every Hanover vessel includes a 5-Year Premier Level Hull Warranty, 1 Year General, Mechanical and Components Warranty, All Accessories & Electrical Parts Under The Original Manufacturer's Warranty.

Cruise with complete confidence knowing you have a team of dedicated professionals at your service.

Don't just own a boat, be part of the Hanover Lifestyle.



Hanover

www.hanoveryachts.com