



*Hanover* / 415

hanoveryachts.com / 2025





The Hanover 415 has all the space and luxury you could ask for. The walkaround design gives you plenty of room to relax, while two spacious cabins and a fully equipped galley keep things comfortable. And with triple engines delivering serious speed, you won't need, or want, anything else.

---

*Hanover* 415

---



# AFT & COCKPIT



Hanover 415

2025



# GALLEY, CABINS, & HEAD.



*Hanover* 415



2025



# BOW & STERN.



Hanover 415

2025



# TECHNICAL SPECIFICATIONS



## LENGTH

Outboards: 43' 2" / 13.15 m  
Inboards: 41' 4" / 12.60 m



## BEAM

12' 2" / 3,70 m



## DRAFT

35.4" / 0.90m



## DRY WEIGHT

20,547 lbs / 9,320 kg



## FUEL TANK CAPACITY

370 gal / 1192 L



## WATER TANK CAPACITY

118 gal / 450 L



## HOLDING TANK

20 gal / 75 L



## CAPACITY

14 day / 5 Night



## CRUISING SPEED

25-27 mph / 40-43 kmh  
Range: 27 mph - 37 gal/h  
Idle: 6 mph - 15.5 gal/h (aprox.)



## WIDE OPEN THROTTLE

40-45 mph / 64-72 kmh  
Range: 45 mph - 75 gal/h



## DEADRISE

17°



## BRIDGE CLEARANCE

10'4" / 3.2 m  
12'4" / 3.8 m with accessories



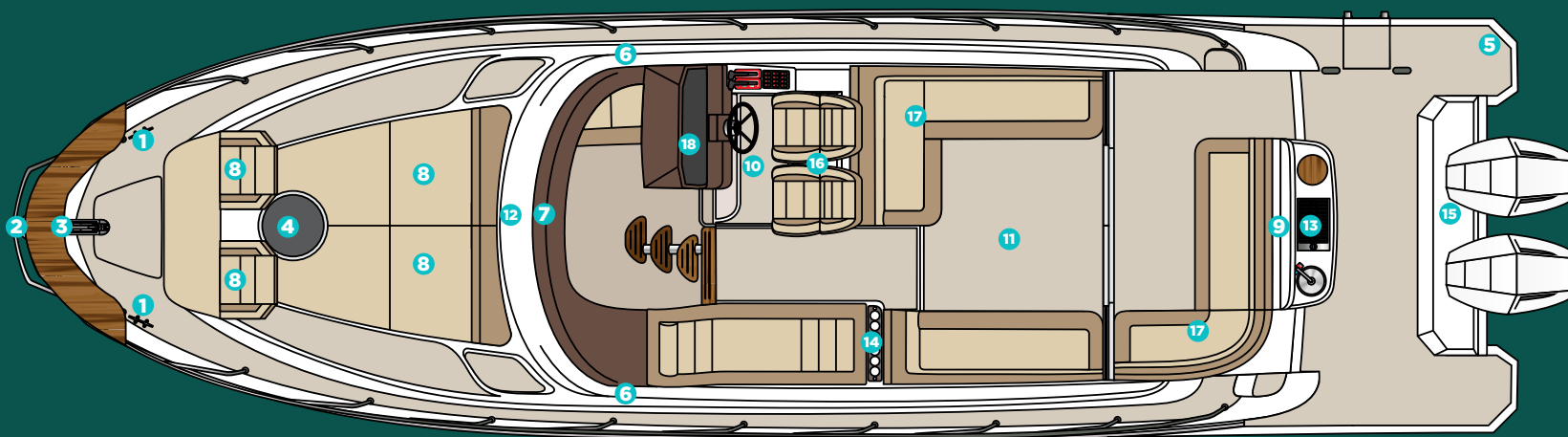
Hanover 415

2025



# HULL AND COCKPIT

- 1** 8" through bolted stainless steel cleats (06 count)
- 2** 1 bow eye
- 3** Stainless steel handrail with teak seat in the bow
- 4** 20" hatch in the bow from cabin to bow area
- 5** 4-step telescopic ladder on platform
- 6** 6 panoramic tempered glass windows
- 7** Tempered glass windshield and anodized aluminum frame
- 8** 4 adjustable sunpads on the bow
- 9** Handle stainless steel in the gourmet space

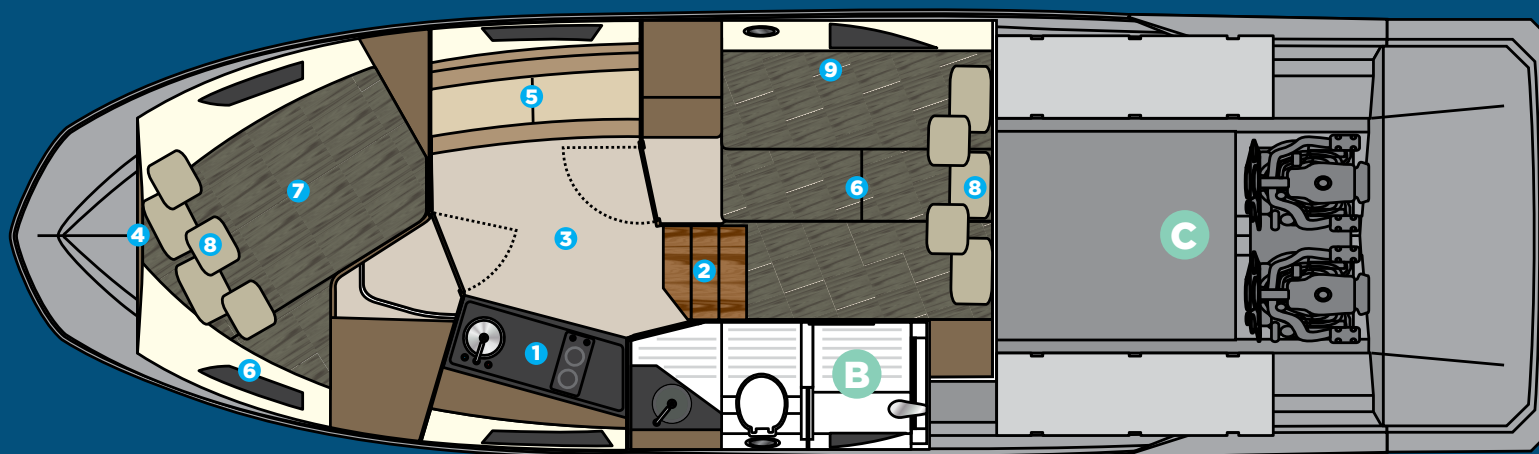


- 10** 4 compartments below the cockpit seats
- 11** Teak table
- 12** Teak steps to the bow
- 13** Gourmet space with top lid, sink and grill place
- 14** Acrylic cup holder in the cockpit
- 15** Compartment for fenders on the platform floor
- 16** Dual rider seat with standing or sitting
- 17** Two seating areas in the cockpit
- 18** Instrument panel that supports up to two 9" electronics with built-in compass



## A CABIN

- 1 Kitchen with sink, synthetic granite top, space for microwave, induction stove, fridge, 3 drawers and 3 cabinets
- 2 Staircase with 3 wide teak steps
- 3 Vinilic special flooring
- 4 Decorative mirror on the bow
- 5 Sofa for 3 people with Teak table
- 6 Sofa for 3 people convertibles into a double bed in the Middle ship cabin
- 7 Couple bed in the bow cabin
- 8 Luxury layette kit with 10 pillows



## B HEAD

- Electric toilet with 22 gallon waste box, macerator pump and external nozzle
- Cabinet with four doors, sink in synthetic granite with bowl overlaid in tempered glass
- Air cabinet with four mirrored doors
- Decorative coating with glass inserts
- Shower box free standing height 6'2" /1,88 min
- Tempered glass box
- Shower with mixer
- Non-slip floor

## C ENGINE

- Interior in gray gelcoat
- Non-slip sole, flat
- Insulation, acoustic and thermal
- Fire extinguisher
- Compartment, sealed, for air conditioning
- Compartment, sealed, for batteries
- Exhaust fans (2)
- Engine room hatch
- Access door with gas pistons and lock
- Fuel tank, aluminum, with level gauge



**CUSTOMIZE  
AND HAVE  
THE MOST  
UNIQUE  
VESSEL  
AT SEA.**

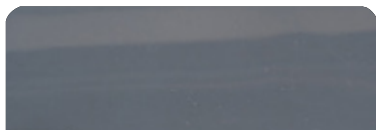




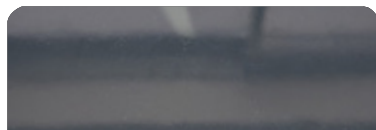


## EXTERIOR PAINT OPTIONS

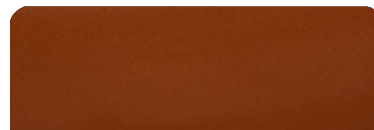
All options are available in either a high-gloss or matte finish.



Moonstone Gray



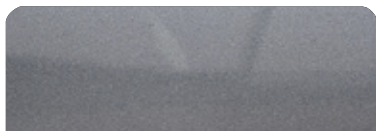
Pure Gray



Orange Pearl



Spring Blue



Orkney Gray



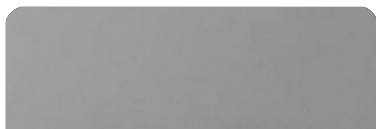
Ice Silver



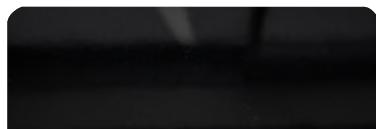
Moscou Red



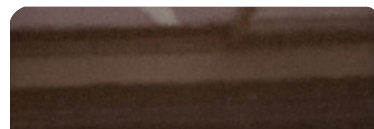
Heraldic Blue



Crayon Gray



Gales Black (Tuxedo)



Marrakesh Brown

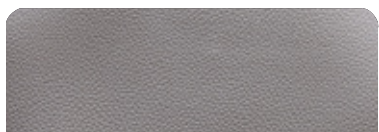


Macaw Blue

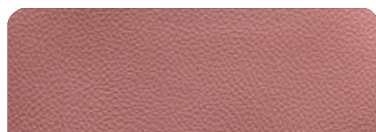




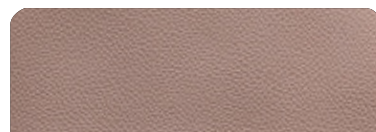
## UPHOLSTERY OPTIONS



Fern



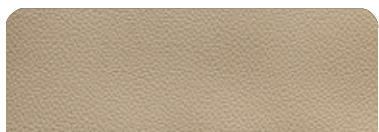
Terracota



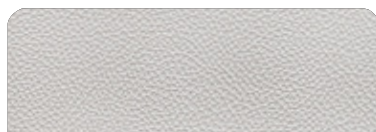
Caramello



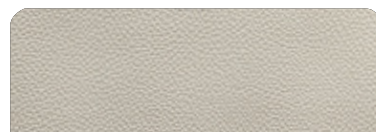
Black



Land Rover



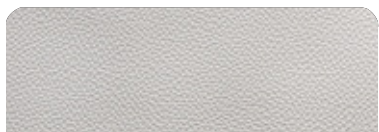
Taupe



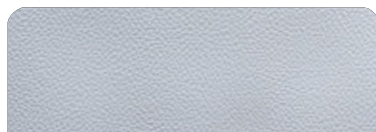
Ivory



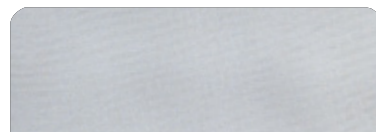
Orange



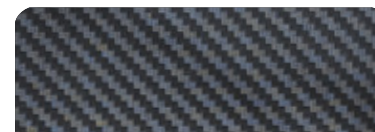
Off White



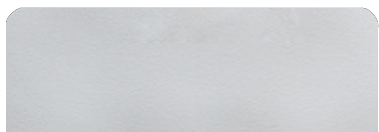
Gray



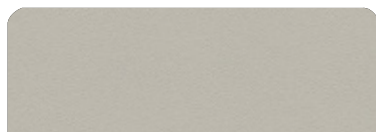
Silver



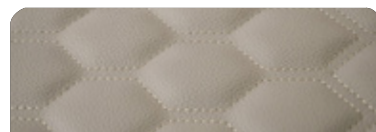
Carbon Fiber



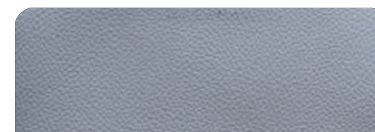
White



Beige



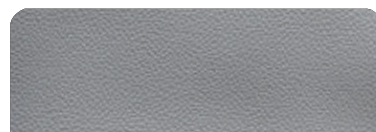
Matelasse Honeycomb



New Corolla



Blue



Corolla

*Hanover* 415

\*Additional options are available upon request.

2025



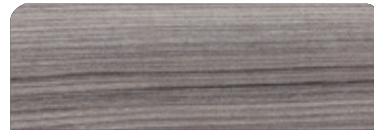
## FURNITURE VINYL OPTIONS



Salina



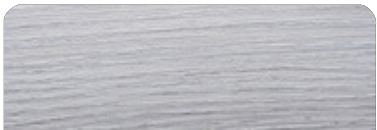
Massal



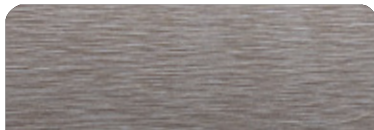
Cherry



Patina



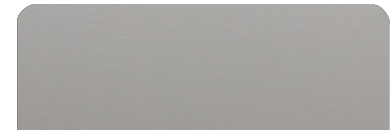
Alder



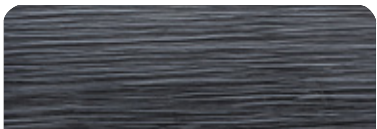
Bronze



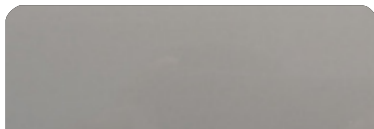
Freije



Taupe Super Matte



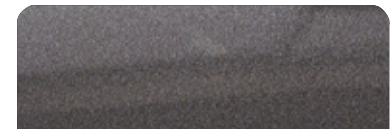
Black Line



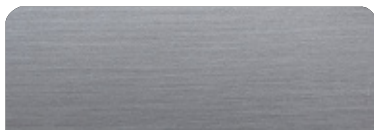
Taupe High Gloss



Canyon



Onix



Metallic



Gray Oak





## INTERIOR FLOORING OPTIONS



Alba



Almond



Pine



Amendola



Sand



Cement



Imbuia



Cumaru



Gray



Duna

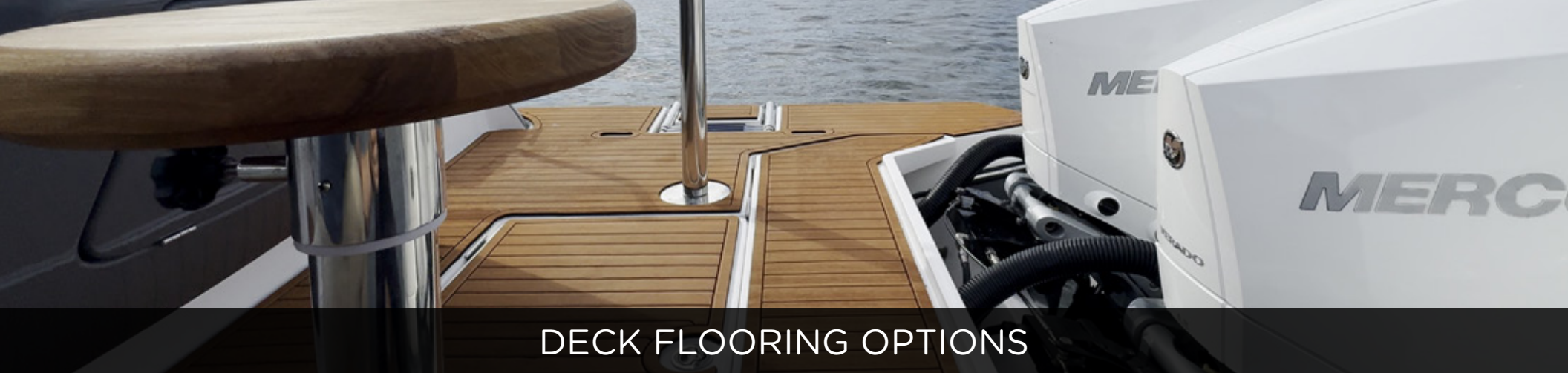


Vintage



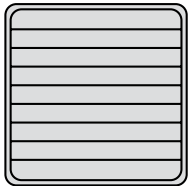
Kashmir



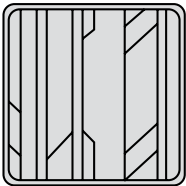


DECK FLOORING OPTIONS

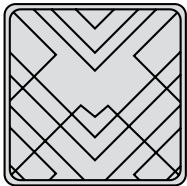
PATTERNS



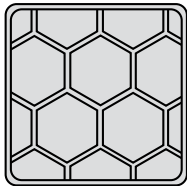
Classic



Aztec



Imperial



Beehive

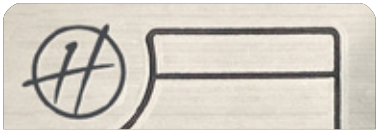
EVA



Tuscany



Ocher



Gray

SYNTHETIC  
TEAK



Gray



Madeira



Sand



# STANDARD EQUIPMENT

## HULL AND DECK

- 8" through bolted stainless steel cleats
- (06 count)
- 1 bow eye
- 2 eyes at the stern
- Stainless steel handrail with teak seat in the bow
- Self-draining floor
- 20" hatch in the bow from cabin to bow area
- 6 panoramic tempered glass windows
- Tempered glass windshield and anodized aluminum frame
- 4-step telescopic ladder on platform
- Double bow solarium with adjustable backrest
- Handle stainless steel in the gourmet space
- Compartment for fenders on the platform floor
- 4 compartments below the cockpit seats
- Teak table
- Upholstery in anti-mold leather
- Gourmet space with top lid, sink, cooler, cutting board and grill place
- Hard-Top with electric opening
- Acrylic cup holder in the cockpit
- Instrument panel that supports up to two 9" electronics with built-in compass
- Dual rider seat with standing or sitting
- Two seating areas in the cockpit
- Garbage Displacement

## PUMPS AND TANKS

- Water tank, potable
- Fresh water pump
- Bilge pumps, engine room, with automatic switches
- Bilge pump, at midships, with automatic switch
- Collection box for shower with pump
- Showerhead, aft, with mixer

## CABIN

- Staircase with 3 wide teak steps
- Ultra moisture resistant MDF furniture
- Kitchen with sink, synthetic granite top, space for microwave, induction stove, fridge, 3 drawers and 3 cabinets
- Vinilic special flooring
- Decorative mirror on the bow
- Sofa for 3 people with Teak table
- Sofa for 3 people convertibles into a double bed in the Middle ship cabin
- Couple bed in the bow cabin
- Coverings in waterproof fabric or anti-mold nautical leather
- Side walls covered with anti-mold foam and nautical leather
- Luxury layette kit with 10 pillows

## ENGINE ROOM

- Interior in gray gelcoat
- Non-slip sole, flat
- Insulation, acoustic and thermal
- Fire extinguisher
- Compartment, sealed, for air conditioning and batteries
- Exhaust fans (2)
- Engine room hatch
- Access door with gas pistons and lock
- Fuel tank, aluminum, with level gauge

## HEAD

- Electric toilet with 22 gallon waste box, macerator pump and external nozzle
- Cabinet with four doors, sink in synthetic granite with bowl overlaid in tempered glass
- Air cabinet with four mirrored doors
- Decorative coating with glass inserts
- Shower with mixer
- Tempered glass box
- Shower box free standing height 6'2" /1,88 m
- Non-slip floor

## ELECTRICAL

- Circuit breaker board
- Selector switch for pier/generator/inverter
- Electrical panel in the cockpit with special switches
- Navigation lights
- Anchoring lights
- Indirect LED lighting on the cockpit ceiling, bathroom, cabin, cabinet and under the sofas and dashboard
- LED spotlights on the cabin and cockpit ceiling
- Lighting in the engine room
- 120v sockets in the cockpit, cabin and bathroom
- 12v / USB sockets on the dashboard and in the cabin
- Shore power socket
- Individual master switches for accessory batteries and motors 2023

## OPTIONS INCLUDED

- Synthetic teak or EVA on bow, cockpit and swim platform
- Sound system
- Anchor Windlass Electric System
- Anchor, 22 lbs, with chain
- VHF Radio w/ Antenna
- Sunroof, electric opening
- Holding tank with macerator
- Air conditioning, 12,000 BTU
- Generator
- Refrigerator
- Trim tabs, electric
- Spotlights
- Shorepower
- Gourmet Area
- HardTop with an electric sunroof

An aerial, top-down view of a Hanover 415 motorboat on dark blue water. The boat's deck is finished with light-colored wood planking. A large, dark grey storage hatch is open on the left side of the cockpit. In the center, there is a white, rounded structure, likely a swim platform or part of the engine enclosure. At the stern, three white outboard motors are mounted on the transom. The boat's name, "Hanover", is written in a cursive script on the transom. The overall lighting is dim, suggesting dusk or dawn.

# OUTBOARD & INBOARD OPTIONS



2025 HANOVER 415

# OUTBOARD

ENGINES

## ESSENTIAL

PACKAGE

## PREMIUM

PACKAGE

Engine	Twin Mercury® VERADO 350hp V10 w/ Joystick Piloting	Twin Mercury® VERADO 400hp V10 w/ Joystick Piloting
GPS	GPS SIMRAD® Go9 (9")	GPS SIMRAD® Nss12 (12")
Exterior Painting	1 Color (Hull)	2 Colors or More (Hull, Deck or HT)
A/C	12,000 BTU (Cabin)	16,000 + 6,000 BTU (Cabin - Cockpit)
Refrigerator	79L Refrigerator - 110V	Isotherm® 65L Fridge 12V
VHF Radio	Uniden® VHF Radio w/ Antenna	SIMRAD® VHF Radio w/ Antenna
Power Generator	Kohler® 6KW	Kohler® 9KW
Sound System	Boss Sound Kit + 6 JBL Marine Speakers + Amplifier	Fusion® Marine Sound Kit + 6 Marine Speakers + Amplifier
Electric Trim Tabs (Flaps)	✓	✓
Headlights With Remote (Cruising Spotlight)	✓	✓
EVA Flooring (Cockpit, Platform, Bow)	✓	✓
Electric Anchor Windlass System - 1000w + 10kg Anchor And 40m Chain (35+)	✓	✓
Windshield Wipers	✓	✓
Macerator Pump And Holding Tank	✓	✓
Hot Water System - Heater (Shower)	✓	✓
Shore Power System	✓	✓
Shore Power Cord 50A	✓	✓
Power Charger 100A	✓	✓
Microwave Oven	✓	✓
Heavy Duty Folding Table (Cockpit)	✓	✓
Galvanic Isolator (Electrical Protection)	✓	✓
Induction Electric Stove (Cabin)		✓
LED 24" TV Set And Mounting		✓
Upholstered Stools/chairs On Stern (Kit Of 2 Banquets)		✓
Teak Table On Stern (Platform Extra Table)		✓
Leather Cover Panel (Complete Dashboard & Helm)		✓
Design Items Set (Pillows, Bedding, Cushions, Towels, Accessories)		✓

### \$621,835

### \$665,780

2025 HANOVER 415

# INBOARD

## ENGINES

# ESSENTIAL

## PACKAGE

# PREMIUM

## PACKAGE

Engine	Twin Mercury® Mercruiser Axis 350hp W/ Joystick Piloting	Twin Mercury® Mercruiser Axis 380hp W/ Joystick Piloting
GPS	GPS SIMRAD® Go9 (9")	GPS SIMRAD® Nss12 (12")
Exterior Painting	1 Color (Hull)	2 Colors or More (Hull, Deck or HT)
A/C	12,000 BTU (Cabin)	16,000 + 6,000 BTU (Cabin - Cockpit)
Refrigerator	79L Refrigerator - 110V	Isotherm® 65L Fridge 12V
VHF Radio	Uniden® VHF Radio w/ Antenna	SIMRAD® VHF Radio w/ Antenna
Power Generator	Kohler® 6KW	Kohler® 9KW
Sound System	Boss Sound Kit + 6 JBL Marine Speakers + Amplifier	Fusion® Marine Sound Kit + 6 Marine Speakers + Amplifier
Electric Trim Tabs (Flaps)	✓	✓
Headlights With Remote (Cruising Spotlight)	✓	✓
EVA Flooring (Cockpit, Platform, Bow)	✓	✓
Electric Anchor Windlass System - 1000w + 10kg Anchor And 40m Chain (35+)	✓	✓
Windshield Wipers	✓	✓
Macerator Pump And Holding Tank	✓	✓
Hot Water System - Heater (Shower)	✓	✓
Shore Power System	✓	✓
Shore Power Cord 50A	✓	✓
Power Charger 100A	✓	✓
Microwave Oven	✓	✓
Heavy Duty Folding Table (Cockpit)	✓	✓
Galvanic Isolator (Electrical Protection)	✓	✓
Induction Electric Stove (Cabin)		✓
LED 24" TV Set And Mounting		✓
Upholstered Stools/chairs On Stern (Kit Of 2 Banquets)		✓
Teak Table On Stern (Platform Extra Table)		✓
Leather Cover Panel (Complete Dashboard & Helm)		✓
Design Items Set (Pillows, Bedding, Cushions, Towels, Accessories)		✓

\$576,835

\$619,675





# BUILD YOUR BOAT.

Choose Upgrades  
Tailored to Your Lifestyle.

*Hanover* 415

2025



## ENGINES

**BUILD YOUR BOAT BY SELECTING ITEMS FROM THE LIST BELOW**

### **INBOARD**

MERCURY TWIN MERCUISER AXIUS 350HP W/ JOYSTICK PILOTING

MERCURY TWIN MERCUISER AXIUS 380HP W/ JOYSTICK PILOTING

VOLVO TWIN D6 380HP DIESEL

VOLVO TWIN D6 400HP DIESEL

VOLVO TWIN IPS 600 440HP DIESEL W/ JOYSTICK

VOLVO TWIN IPS 600 650HP DIESEL W/ JOYSTICK

### **OUTBOARD**

MERCURY TWIN VERADO 350HP V10 W/ JOYSTICK PILOTING

MERCURY TWIN VERADO 400HP V10 W/ JOYSTICK PILOTING

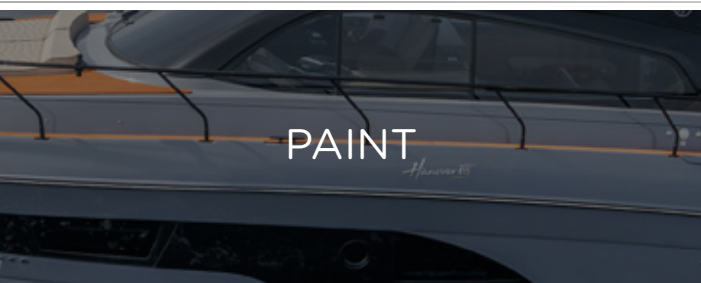
MERCURY TWIN VERADO 600HP V12 W/ JOYSTICK PILOTING

MERCURY TRIPLE VERADO 300HP V8 W/ JOYSTICK PILOTING

MERCURY TRIPLE VERADO 300R RACING W/ JOYSTICK PILOTING

MERCURY TRIPLE VERADO 350HP V10 W/ JOYSTICK PILOTING

MERCURY TRIPLE VERADO 400HP V10 OUTBOARDS W/ JOYSTICK PILOTING



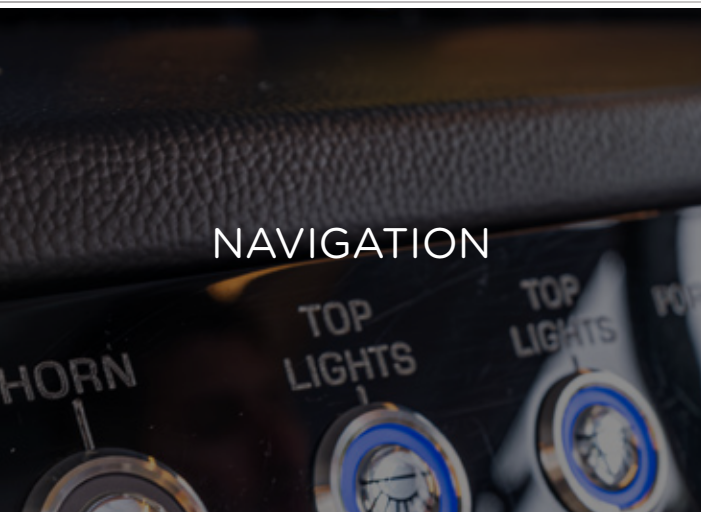
## PAINT

EXTERNAL SINGLE PAINTING (1 COLOR, HULL)

EXTERNAL DOUBLE PAINTING (2 OR MORE COLORS, HULL, DECK OR HT)

EXTERNAL COMPLETE SPECIAL PAINT AND OR SPECIAL COLOR SELECTION

BOTTOM PAINT - ANTIFOUL COPPERCOAT PAINT



## NAVIGATION

ELECTRIC TRIM TABS (FLAPS)

HUMPHREE AUTOMATIC TRIM TABS

ZIP WAKE AUTOMATIC TRIM TABS

HEAD LIGHTS WITH REMOTE (CRUISING SPOTLIGHT)

BOW THRUSTERS

MC<sup>2</sup> QUICK GYRO STABILIZERS (X10)

FLIR NIGHT VISION

ITALIAN STEERING WHEEL





## FLOORING

EVA FLOORING (COCKPIT, PLATFORM, BOW)  
SYNTHETIC TEAK FLOORING (COCKPIT, PLATFORM, BOW)  
REAL TEAK FLOORING (COCKPIT, PLATFORM, BOW)




## AUDIO

BOSS SOUND KIT + 6 JBL MARINE SPEAKERS + AMPLIFIER  
FUSION MARINE SOUND SYSTEM KIT + 6 MARINE SPEAKERS + AMPLIFIER  
JBL MARINE SUBWOOFER  
JBL MARINE AMPLIFIER (EXTRA) (2 CHANNELS)  
FUSION MARINE AMPLIFIER (EXTRA) (2 CHANNELS)  
JBL MARINE SPEAKERS (EXTRA PAIR)  
JL AUDIO KIT 1 - MEDIA MASTER + 6 SPEAKERS + AMP  
JL AUDIO KIT 2 - MEDIA MASTER + 8 SPEAKERS + AMP + SUBWOOFER



## ELECTRONICS

GPS RAYMARINE ELEMENT 7S (7")  
GPS RAYMARINE AXIOM 9"  
GPS RAYMARINE AXIOM 12"  
GPS SIMRAD Go7 (7")  
GPS SIMRAD Go9 (9")  
GPS SIMRAD NSS 10" EVO4 (10")  
GPS SIMRAD NSS12 (12")  
GPS SIMRAD NSX15 ULTRAWIDE (15")  
GPS SIMRAD NSS16 (16")  
GPS GARMIN 9"  
GPS GARMIN 12"  
MERCURY VESSEL VIEW 4"  
MERCURY VESSEL VIEW 7"  
MERCURY VESSEL VIEW 9"  
SIMRAD RADAR HALO20+  
RAYMARINE RADAR QUANTUM II  
GARMIN RADAR  
UNIDEN VHF RADIO W/ ANTENNA  
SIMRAD VHF RADIO W/ ANTENNA



## GENERATOR

KOHLER 6KW POWER GENERATOR  
KOHLER 9KW POWER GENERATOR  
KOHLER 11KW POWER GENERATOR




## COVERS

SET OF WEATHERIZED EXTERIOR SEAT COVERS  
SNAP-ON CANVAS COVER  
EISENGLASS ENCLOSURE



## AIR CONDITIONING

A/C SYSTEM - 6,000 BTU (COCKPIT)  
A/C SYSTEM - 9,000 BTU (COCKPIT)  
A/C SYSTEM - 12,000 BTU (CABIN)  
A/C SYSTEM - 16,000 BTU (CABIN)



## UTILITIES

ELECTRIC ANCHOR WINDLASS SYSTEM - 1000W + 10KG ANCHOR AND 40M CHAIN (35+)  
WINDSHIELD WIPERS  
MACERATOR PUMP AND HOLDING TANK  
HOT WATER SYSTEM - HEATER (SHOWER)  
SHORE POWER SYSTEM  
SHORE POWER CORD 50A  
POWER CHARGER 100A  
INDUCTION ELECTRIC STOVE (CABIN)  
MICROWAVE OVEN  
79L REFRIGERATOR - 110V  
ISOTHERM 65L FRIDGE 12V  
REFRIGERATED 12V DRAWER (COCKPIT)  
ISOTHERM ICE MAKER (CABIN)  
KENYON ELECTRIC GRILL (STERN)  
LED 24" TV SET AND MOUNTING  
ELECTRONIC OPENING TV SET (COCKPIT)  
USCG BOATING SAFETY KIT  
LINES & FENDERS





## COMFORT & DESIGN

ITALIAN PREMIUM UPHOLSTERY  
WOODEN STOOLS/CHAIRS ON STERN (KIT OF 2 BANQUETS)  
UPHOLSTERED STOOLS/CHAIRS ON STERN (KIT OF 2 BANQUETS)  
TEAK TABLE ON STERN (PLATFORM EXTRA TABLE)  
HEAVY DUTY FOLDING TABLE (COCKPIT)  
BOW TENT (BIMINI TOP ON BOW)  
HYDRAULIC UNDERWATER SWIM PLATFORM (**INBOARDS ONLY**)  
CERAMIC MARBLE DECORATIVE WALL (HEAD)  
MID SHIP CABIN ROOM ENCLOSURE (WOOD/DOOR)  
MAIN CABIN ROOM ENCLOSURE (WOOD/DOOR)  
MANUAL AFT SHADE (STOBAG)  
ELECTRIC AFT SHADE (STOBAG)  
GLASS DOOR ENCLOSURE FOR COCKPIT (415)  
LEATHER COVER PANEL (COMPLETE DASHBOARD & HELM)  
ADJUSTABLE SINGLE SEAT - MANUAL  
ADJUSTABLE SINGLE SEAT - ELECTRIC  
LED MIRROR UPGRADE (BATHROOM)  
BLACK EXTERIOR RAILING  
DESIGN ITEMS SET (PILLOWS, BEDDINES, CUSHIONS, TOWELS, ACCESSORIES)



## ADDITIONAL UPGRADES

UNDERWATER LIGHTS (PAIR)  
RGB CHANGING LIGHTS (COCKPIT)  
GALVANIC ISOLATOR (ELECTRICAL PROTECTION)  
FIREBOY - ADVANCED FIRE SUPPRESSION SYSTEM  
LIVWELL (COCKPIT)  
ADJ ENGINE PROTECTION RAILING W/ ROD HOLDERS  
ADJ ENGINE PROTECTION RAILING  
PPF (PAINT PROTECTION FILM)  
YACHT CONTROLLER  
STARLINK  
ADDTL USB / ELECTRICAL OUTLETS



For Pricing and more Options  
**Contact us now:**



[www.hanoveryachts.com](http://www.hanoveryachts.com)



[sales@hanoveryachts.com](mailto:sales@hanoveryachts.com)



+1 954-355-9204



+1 (305) 452-0002

# HANOVER OWNERSHIP PROGRAM

---

At Hanover, we ensure an exciting stress-free experience from the moment you discover our brand.

## **STRESS-FREE PRICING**

Our entire lineup comes at our lowest price - no haggling needed. Leave the negotiations to used car salesmen, and enjoy a straightforward buying experience with us.

## **FIRST TRIP**

We've got you covered! You'll receive thorough training, and a captain will accompany you until you feel fully confident at the helm. Enjoy the experience like a pro!

## **MAINTENANCE AND WARRANTY**

Every Hanover vessel includes a 5-Year Premier Level Hull Warranty, 1 Year General, Mechanical and Components Warranty, All Accessories & Electrical Parts Under The Original Manufacturer's Warranty.

Cruise with complete confidence knowing you have a team of dedicated professionals at your service.

**Don't just own a boat, be part of the Hanover Lifestyle.**





*Hanover*

[www.hanoveryachts.com](http://www.hanoveryachts.com)