



*Hanover* / 355

hanoveryachts.com / 2025



The Hanover 355 is a yacht that delivers a seamless blend of comfort, functionality, and luxury. Designed with Hanover's signature style, it offers an exceptional

onboard experience, allowing you to enjoy extended time on the water without feeling the need to return to shore.

*Hanover* 355

# AFT & COCKPIT



# GALLEY, CABINS, & HEAD.



*Hanover* 355



2025

# BOW & STERN.



# TECHNICAL SPECIFICATIONS



## LENGTH

Outboards: 37' 3" / 11.35 m  
Inboards: 35' 7" / 10.85 m



## BEAM

10' 6" / 3.2 m



## DRAFT

34" / 0.8 m



## DRY WEIGHT

13,889 lbs / 6,300 kg



## FUEL TANK CAPACITY

250 gal / 946 L



## WATER TANK CAPACITY

50 gal / 190 L



## HOLDING TANK

20 gal / 75 L



## CAPACITY

14 day / 4 Night



## CRUISING SPEED

22-24 mph / 31.3 kph



## WIDE OPEN THROTTLE

43-45 mph / 69.2-72.4 kph



## DEADRISE

16°



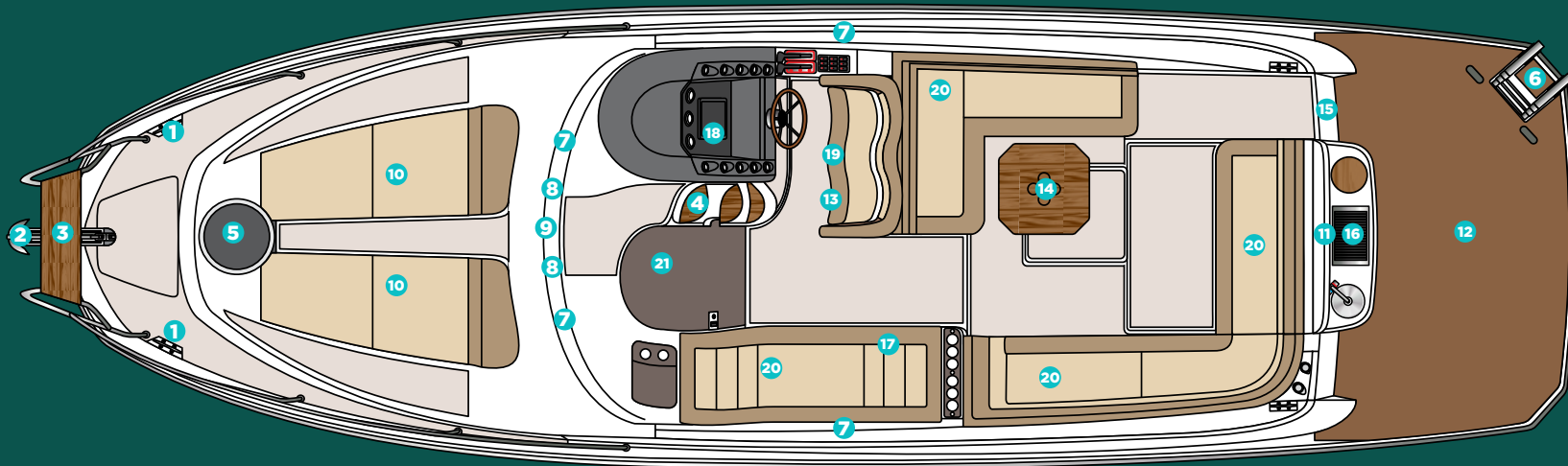
## BRIDGE CLEARANCE

10' 2" / 3 m  
12' 2" / 3.7 m with radar  
or anchor light



# HULL AND COCKPIT

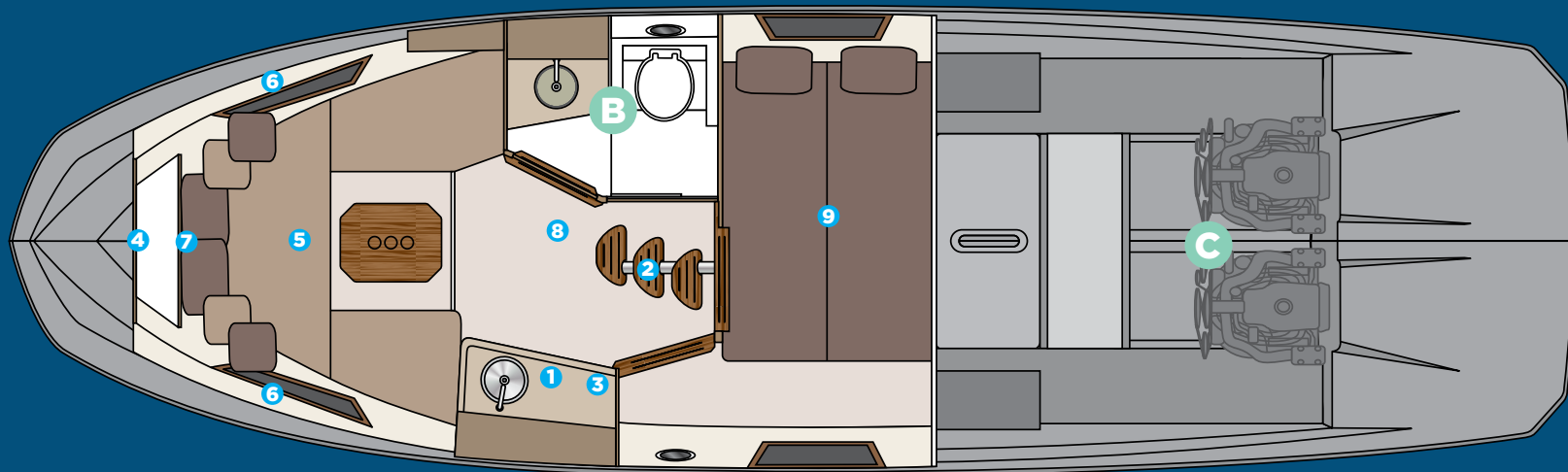
- 1** 8" through bolted stainless steel cleats (O6 count)
- 2** Anchor
- 3** Stainless steel handrail with teak seat in the bow
- 4** Teak steps to the bow
- 5** 20" hatch in the bow from cabin to bow area
- 6** 4-step telescopic ladder on platform
- 7** 4 panoramic tempered glass windows
- 8** 2 tilting tempered glass windows in the cockpit
- 9** Tempered glass windshield and anodized aluminum framebow area
- 10** Double bow solarium with adjustable backrest
- 11** Handle stainless steel in the gourmet space
- 12** Compartment for fenders on the platform floor



- 13** 5 compartments below the cockpit seats
- 14** Teak table
- 15** Acrylic hutch
- 16** Gourmet space with top lid and sink
- 17** Acrylic cup holder in the cockpit
- 18** Instrument panel that supports up to two 9" electronics with built-in compass
- 19** Dual rider seat with standing or sitting
- 20** Two seating areas in the cockpit and L-shaped sectional sofa in the stern
- 21** Acrylic access sliding door with lock and key

## A CABIN

- 1 Kitchen with sink, synthetic granite top, space for microwave, induction stove, fridge, 3 drawers and two cabinets
- 2 Stainless steel staircase with 3 wide teak steps
- 3 Storage under sink
- 4 Decorative mirror on the bow
- 5 U-shaped sofa for 3 people convertibles into a double bed, with teak retractable table
- 6 Shelves in the bow bed
- 7 Luxury layette kit with 10 cushions
- 8 Free standing up of 9' in cabin center
- 9 2 x single beds convertible to a King size bed.



## B HEAD

- Electric toilet with 22 gallon waste box, macerator pump and external nozzle
- Cabinet with two doors, sink in synthetic granite with bowl overlaid in tempered glass
- Air cabinet with two mirrored doors
- Decorative coating with glass
- Shower box free standing height 6'2" /1,88 min
- Tempered glass box
- Shower with mixer
- Non-slip floor

## C ENGINE

- Interior in gray gelcoat
- Non-slip sole, flat
- Insulation, acoustic and thermal
- Fire extinguisher
- Compartment, sealed, for air conditioning
- Compartment, sealed, for batteries
- Exhaust fans (2)
- Engine room hatch
- Access door with gas pistons and lock
- Fuel tank, aluminum, with level gauge



**CUSTOMIZE  
AND HAVE  
THE MOST  
UNIQUE  
VESSEL  
AT SEA.**

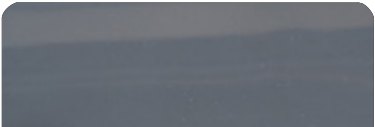
*Hanover* 355

2025

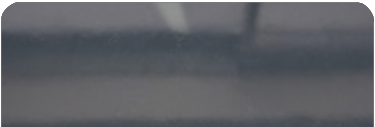


# EXTERIOR PAINT OPTIONS

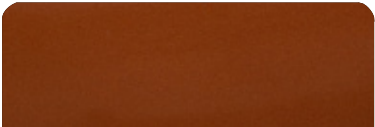
All options are available in either a high-gloss or matte finish.



Moonstone Gray



Pure Gray



Orange Pearl



Spring Blue



Orkney Gray



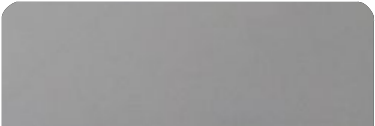
Ice Silver



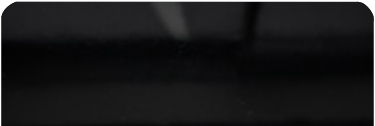
Moscou Red



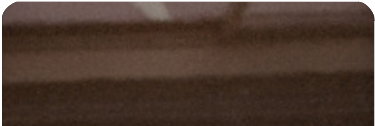
Heraldic Blue



Crayon Gray



Gales Black (Tuxedo)



Marrakesh Brown



Macaw Blue

*Hanover*

## UPHOLSTERY OPTIONS



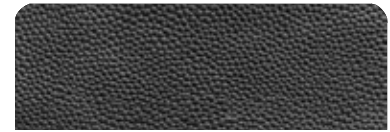
Fern



Terracota



Caramello



Black



Land Rover



Taupe



Ivory



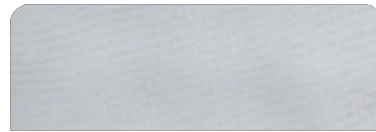
Orange



Off White



Gray



Silver



Carbon Fiber



White



Beige



Matelasse Honeycomb



New Corolla



Blue



Corolla

*Hanover* 355

\*Additional options are available upon request.

2025



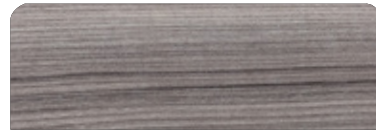
## FURNITURE VINYL OPTIONS



Salina



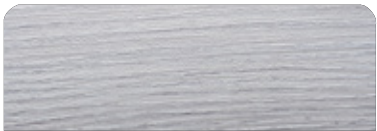
Massal



Cherry



Patina



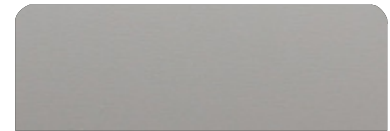
Alder



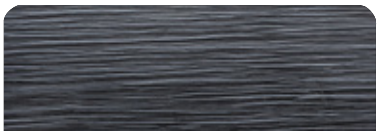
Bronze



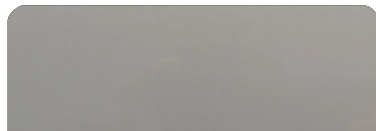
Freije



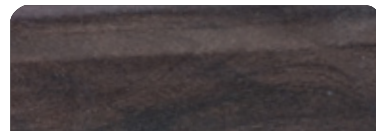
Taupe Super Matte



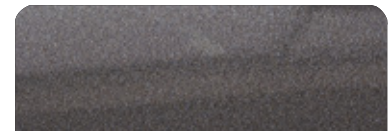
Black Line



Taupe High Gloss



Canyon



Onix



Metallic



Gray Oak



## INTERIOR FLOORING OPTIONS



Alba



Almond



Pine



Amendola



Sand



Cement



Imbuia



Cumaru



Gray



Duna



Vintage

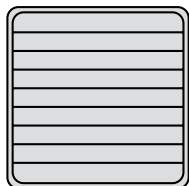


Kashmir

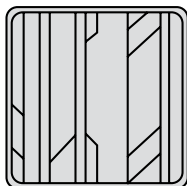


## DECK FLOORING OPTIONS

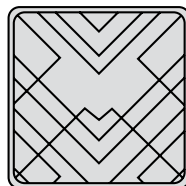
### PATTERNS



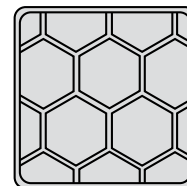
Classic



Aztec

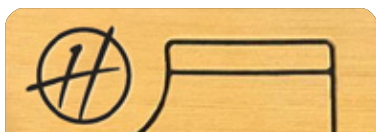


Imperial



Beehive

### EVA



Madeira



Gray



Ocher

### SYNTHETIC TEAK



Madeira



Gray



Sand

\*Additional options are available upon request.

# STANDARD EQUIPMENT

## HULL AND DECK

- Hardtop
- Cleats, 8" thru-bolted stainless steel
- Bow eye, two at stern
- Handrail, stainless steel with teak seat in the bow
- Floor, self-draining
- Hatch in the bow from cabin to bow area
- Windows, panoramic tempered glass
- Windows, tilting tempered glass, cockpit
- Windshield, tempered glass with anodized aluminum frame
- Ladder, 4-step telescopic, swim platform
- Sunbathing area, bow, with adjustable backrest
- Fender storage, platform sole
- Storage compartments below the cockpit seats
- Teak table
- Upholstery in anti-mold leather
- Gourmet cooking space with sink, and cutting board
- Hutch, acrylic
- Cup holder, acrylic, cockpit
- Instrument panel with built-in compass, supports up to two 9" electronics
- Seat, dual passenger, standing or sitting
- Seating areas (2), cockpit
- Sofa, L-shaped sectional, stern

## HEAD

- Head, marine electric, with 20 gal holding tank and macerator
- Cabinet with doors
- Sink, synthetic granite & tempered glass
- Vanity with mirrored doors
- Shower with tempered glass stall
- Sole, non-slip

## CABIN

- Sofa, U-shaped, converts to double bed
- Teak table, retractable
- Access door, sliding, with lock
- Staircase, stainless steel, with wide teak steps
- Furniture, ultra moisture resistant
- Galley with sink, refrigerator, synthetic granite top, stove, drawers & cabinets
- Shelves, forward bed
- Mirror, decorative
- Coverings in waterproof fabric or anti-mold nautical leather
- Side walls covered with anti-mold foam and nautical leather
- Basic bedding kit with ten pillows

## ENGINE ROOM

- Interior in gray gelcoat
- Non-slip sole, flat
- Insulation, acoustic and thermal
- Fire extinguisher
- Compartment, sealed, for air conditioning and batteries
- Exhaust fans (2)
- Engine room hatch
- Access door with gas pistons and lock
- Fuel tank, aluminum, with level gauge

## PUMPS AND TANKS

- Water tank, potable, 50 gal
- Fresh water pump
- Bilge pumps, engine room, with automatic switches
- Bilge pump, amidships, with automatic switch
- Collection box for shower with pump
- Showerhead, aft, with mixer

## ELECTRICAL

- Circuit breaker board
- Selector switch for dock/generator/inverter
- Electrical panel, cockpit
- Lights, navigation
- Lights, anchoring
- Lighting, indirect LED, throughout
- Spotlights, LED, cabin and cockpit ceiling
- Lighting, engine room
- Outlets, 120V, in the cockpit, cabin and head
- Outlets, 12V / USB, dashboard and cabin
- Shore power connection
- Master switches, individual, for accessory batteries and engines
- Battery charging relay, automatic
- Emergency departure
- Batteries (2), engines
- Battery, generator

## OPTIONS INCLUDED

- Synthetic teak or EVA on bow, cockpit and swim platform
- Sound system
- Anchor Windlass Electric System
- Anchor, 22 lbs, with chain
- VHF Radio w/ Antenna
- Sunroof, electric opening
- Holding tank with macerator
- Air conditioning, 12,000 BTU
- Generator
- Refrigerator, galley
- Trim tabs, electric
- Spotlights
- Shorepower
- Inverter and charger system + internal AC
- Gourmet Area

A photograph taken from the perspective of someone on a boat, looking back at two white Mercury outboard motors. The boat is moving through blue water, creating a white wake. In the distance, a small orange buoy is visible on the horizon under a clear blue sky. The Mercury logo is clearly visible on the side of both motors.

# OUTBOARD & INBOARD OPTIONS

*Hanover* 355

2025



2025 HANOVER 355



**ESSENTIAL**  
PACKAGE

**PREMIUM**  
PACKAGE

Engine	Twin Mercury® 225hp DTS V6	Twin Mercury® 250hp DTS V8
GPS	GPS SIMRAD® Go7 (7")	GPS SIMRAD® Go9 (9")
Exterior Painting	1 Color (Hull)	2 Colors or More (Hull, Deck or HT)
A/C	12,000 BTU (Cabin)	12,000 + 6,000 BTU (Cabin - Cockpit)
Refrigerator	79L Refrigerator - 110V	Isotherm® 65L Fridge 12V
VHF Radio	Uniden® VHF Radio w/ Antenna	SIMRAD® VHF Radio w/ Antenna
Power Generator	Onan® 5KW	Kohler® 9KW
Sound System	Boss Sound Kit + 6 JBL Marine Speakers + Amplifier	Fusion® Marine Sound Kit + 6 Marine Speakers + Amplifier
Electric Trim Tabs (Flaps)	✓	✓
Headlights With Remote (Cruising Spotlight)	✓	✓
EVA Flooring (Cockpit, Platform, Bow)	✓	✓
Electric Anchor Windlass System - 1000w + 10kg Anchor And 40m Chain (35+)	✓	✓
Macerator Pump And Holding Tank	✓	✓
Shore Power System	✓	✓
Shore Power Cord 50A	✓	✓
Power Charger 100A	✓	✓
Heavy Duty Folding Table (Cockpit)	✓	✓
Galvanic Isolator (Electrical Protection)	✓	✓
Lines & Fenders	✓	✓
USCG Boating Safety Kit	✓	✓
Windshield Wipers		✓
Italian Steering Wheel		✓
Hot Water System - Heater (Shower)		✓
Induction Electric Stove (Cabin)		✓
LED 24" TV Set And Mounting		✓
Upholstered Stools/Chairs On Stern (Kit Of 2 Banquets)		✓
Teak Table On Stern (Platform Extra Table)		✓
Design Items Set (Pillows, Bedding, Cushions, Towels, Accessories)		✓

\$356,545

\$395,475

2025 HANOVER 355

# INBOARD ENGINES

## ESSENTIAL PACKAGE

## PREMIUM PACKAGE

Engine	Single Mercury® Mercruiser Axius 380hp	Twin Mercury® Mercruiser Axius 250hp W/ Joystick Piloting
GPS	GPS SIMRAD® Go7 (7")	GPS SIMRAD® Go9 (9")
Exterior Painting	1 Color (Hull)	2 Colors or More (Hull, Deck or HT)
A/C	12,000 BTU (Cabin)	12,000 + 6,000 BTU (Cabin - Cockpit)
Refrigerator	79L Refrigerator - 110V	Isotherm® 65L Fridge 12V
VHF Radio	Uniden® VHF Radio w/ Antenna	SIMRAD® VHF Radio w/ Antenna
Power Generator	Onan® 5KW	Kohler® 9KW
Sound System	Boss Sound Kit + 6 JBL Marine Speakers + Amplifier	Fusion® Marine Sound Kit + 6 Marine Speakers + Amplifier
Electric Trim Tabs (Flaps)	✓	✓
Headlights With Remote (Cruising Spotlight)	✓	✓
EVA Flooring (Cockpit, Platform, Bow)	✓	✓
Electric Anchor Windlass System - 1000w + 10kg Anchor And 40m Chain (35+)	✓	✓
Macerator Pump And Holding Tank	✓	✓
Shore Power System	✓	✓
Shore Power Cord 50A	✓	✓
Power Charger 100A	✓	✓
Heavy Duty Folding Table (Cockpit)	✓	✓
Galvanic Isolator (Electrical Protection)	✓	✓
Lines & Fenders	✓	✓
USCG Boating Safety Kit	✓	✓
Windshield Wipers		✓
Italian Steering Wheel		✓
Hot Water System - Heater (Shower)		✓
Induction Electric Stove (Cabin)		✓
LED 24" TV Set And Mounting		✓
Upholstered Stools/Chairs On Stern (Kit Of 2 Banquets)		✓
Teak Table On Stern (Platform Extra Table)		✓
Design Items Set (Pillows, Bedding, Cushions, Towels, Accessories)		✓

\$332,495

\$394,725


# BUILD YOUR BOAT.

Choose Upgrades  
Tailored to Your Lifestyle.

*Hanover* 355

2025

## BUILD YOUR BOAT BY SELECTING ITEMS FROM THE LIST BELOW




### ENGINES

#### INBOARD

- MERCURY SINGLE MERCUISER AXIUS 380HP
- MERCURY TWIN MERCUISER AXIUS 250HP W/ JOYSTICK PILOTING
- MERCURY TWIN MERCUISER AXIUS 300HP W/ JOYSTICK PILOTING
- MERCURY TWIN MERCUISER AXIUS 350HP W/ JOYSTICK PILOTING
- VOLVO TWIN D6 380HP DIESEL
- VOLVO TWIN D6 400HP DIESEL

#### OUTBOARD

- MERCURY TWIN 225HP DTS V6 OUTBOARDS
- MERCURY TWIN 250HP DTS V8 OUTBOARDS
- MERCURY TWIN VERADO 250HP V8 OUTBOARDS W/ JOYSTICK PILOTING
- MERCURY TWIN 300HP DTS V8 OUTBOARDS
- MERCURY TWIN VERADO 300HP V8 OUTBOARDS W/ JOYSTICK PILOTING
- MERCURY TWIN VERADO 350HP V10 OUTBOARDS W/ JOYSTICK PILOTING
- MERCURY TWIN VERADO 400HP V10 OUTBOARDS W/ JOYSTICK PILOTING



### PAINT

- EXTERNAL SINGLE PAINTING (1 COLOR, HULL)
- EXTERNAL DOUBLE PAINTING (2 OR MORE COLORS, HULL, DECK OR HT)
- EXTERNAL COMPLETE SPECIAL PAINT AND OR SPECIAL COLOR SELECTION
- BOTTOM PAINT - ANTIFOUL COPPERCOAT PAINT



### NAVIGATION

- ELECTRIC TRIM TABS (FLAPS)
- HUMPHREE AUTOMATIC TRIM TABS
- ZIP WAKE AUTOMATIC TRIM TABS
- HEAD LIGHTS WITH REMOTE (CRUISING SPOTLIGHT)
- BOW THRUSTERS
- MC<sup>2</sup> QUICK GYRO STABILIZERS (X10)
- FLIR NIGHT VISION
- ITALIAN STEERING WHEEL



## FLOORING

- EVA FLOORING (COCKPIT, PLATFORM, BOW)
- SYNTHETIC TEAK FLOORING (COCKPIT, PLATFORM, BOW)
- REAL TEAK FLOORING (COCKPIT, PLATFORM, BOW)




## AUDIO

- BOSS SOUND KIT + 6 JBL MARINE SPEAKERS + AMPLIFIER
- JBL MARINE SPEAKERS (EXTRA PAIR)
- JBL MARINE SUBWOOFER
- JBL MARINE AMPLIFIER (EXTRA) (2 CHANNELS)
- FUSION MARINE AMPLIFIER (EXTRA) (2 CHANNELS)
- FUSION MARINE SOUND SYSTEM KIT + 6 MARINE SPEAKERS + AMPLIFIER
- JL AUDIO KIT 1 - MEDIA MASTER + 6 SPEAKERS + AMP
- JL AUDIO KIT 2 - MEDIA MASTER + 8 SPEAKERS + AMP + SUBWOOFER



## ELECTRONICS

- GPS RAYMARINE ELEMENT 7S (7")
- GPS RAYMARINE AXIOM 9"
- GPS RAYMARINE AXIOM 12"
- GPS SIMRAD Go7 (7")
- GPS SIMRAD Go9 (9")
- GPS SIMRAD NSS 10" EVO4 (10")
- GPS SIMRAD NSS12 (12")
- GPS SIMRAD NSX15 ULTRAWIDE (15")
- GPS SIMRAD NSS16 (16")
- GPS GARMIN 9"
- GPS GARMIN 12"
- MERCURY VESSEL VIEW 4"
- MERCURY VESSEL VIEW 7"
- MERCURY VESSEL VIEW 9"
- SIMRAD RADAR HALO20+
- RAYMARINE RADAR QUANTUM II
- GARMIN RADAR
- UNIDEN VHF RADIO W/ ANTENNA
- SIMRAD VHF RADIO W/ ANTENNA



## GENERATOR

ONAN 5KW POWER GENERATOR  
KOHLER 6KW POWER GENERATOR  
KOHLER 9KW POWER GENERATOR  
KOHLER 11KW POWER GENERATOR



## COVERS

SET OF WEATHERIZED EXTERIOR SEAT COVERS  
SNAP-ON CANVAS COVER  
EISENGLASS ENCLOSURE



## AIR CONDITIONING

A/C SYSTEM - 6,000 BTU (COCKPIT)  
A/C SYSTEM - 9,000 BTU (COCKPIT)  
A/C SYSTEM - 12,000 BTU (CABIN)  
A/C SYSTEM - 16,000 BTU (CABIN)  
BATTERY OPERATED A/C - 7,000 BTU (CABIN)



## UTILITIES

ELECTRIC ANCHOR WINDLASS SYSTEM - 1000W + 10KG ANCHOR AND 40M CHAIN  
WINDSHIELD WIPERS  
MACERATOR PUMP AND HOLDING TANK  
HOT WATER SYSTEM - HEATER (SHOWER)  
SHORE POWER SYSTEM  
SHORE POWER CORD 50A  
POWER CHARGER 100A  
POWER CHARGER/INVERTER 1800W  
POWER CHARGER/INVERTER 3000W  
INDUCTION ELECTRIC STOVE (CABIN)  
MICROWAVE OVEN  
79L REFRIGERATOR - 110V  
ISOTHERM 65L FRIDGE 12V  
REFRIGERATED 12V DRAWER (COCKPIT)  
ISOTHERM ICE MAKER  
KENYON ELECTRIC GRILL (STBD)  
LED 24" TV SET AND MOUNTING  
USCG BOATING SAFETY KIT  
LINES & FENDERS



## COMFORT & DESIGN

- GLASS DOOR ENCLOSURE FOR COCKPIT
- WOODEN STOOLS/CHAIRS ON STERN (KIT OF 2 BANQUETS)
- UPHOLSTERED STOOLS/CHAIRS ON STERN (KIT OF 2 BANQUETS)
- TEAK TABLE ON STERN (PLATFORM EXTRA TABLE)
- HEAVY DUTY FOLDING TABLE (COCKPIT)
- BOW TENT (BIMINI TOP ON BOW)
- HYDRAULIC UNDERWATER SWIM PLATFORM (INBOARD ONLY)
- CERAMIC MARBLE DECORATIVE WALL (HEAD)
- MID SHIP CABIN ROOM ENCLOSURE (WOOD/DOOR)
- MAIN CABIN ROOM ENCLOSURE (WOOD/DOOR)
- MANUAL AFT SHADE (STOBAG)
- ELECTRIC AFT SHADE (STOBAG)
- ITALIAN PREMIUM UPHOLSTERY
- LEATHER COVER PANEL (COMPLETE DASHBOARD & HELM)
- ADJUSTABLE SINGLE SEAT - MANUAL
- ADJUSTABLE SINGLE SEAT - ELECTRIC
- LED MIRROR UPGRADE (BATHROOM)
- BLACK EXTERIOR RAILING
- DESIGN ITEMS SET (PILLOWS, BEDDING, CUSHIONS, TOWELS, ACCESSORIES)



## ADDITIONAL UPGRADES

- UNDERWATER LIGHTS (PAIR)
- RGB CHANGING LIGHTS (COCKPIT)
- GALVANIC ISOLATOR (ELECTRICAL PROTECTION)
- FIREBOY - ADVANCED FIRE SUPPRESSION SYSTEM
- LIVWELL (COCKPIT)
- ADJ ENGINE PROTECTION RAILING W/ ROD HOLDERS
- ADJ ENGINE PROTECTION RAILING
- PPF (PAINT PROTECTION FILM) (355)
- YACHT CONTROLLER
- STARLINK
- ADDTL USB / ELECTRICAL OUTLETS
- REMOVABLE LADDER (BEACH CLUB)



For Pricing and more Options  
**Contact us now:**



[www.hanoveryachts.com](http://www.hanoveryachts.com)



[sales@hanoveryachts.com](mailto:sales@hanoveryachts.com)

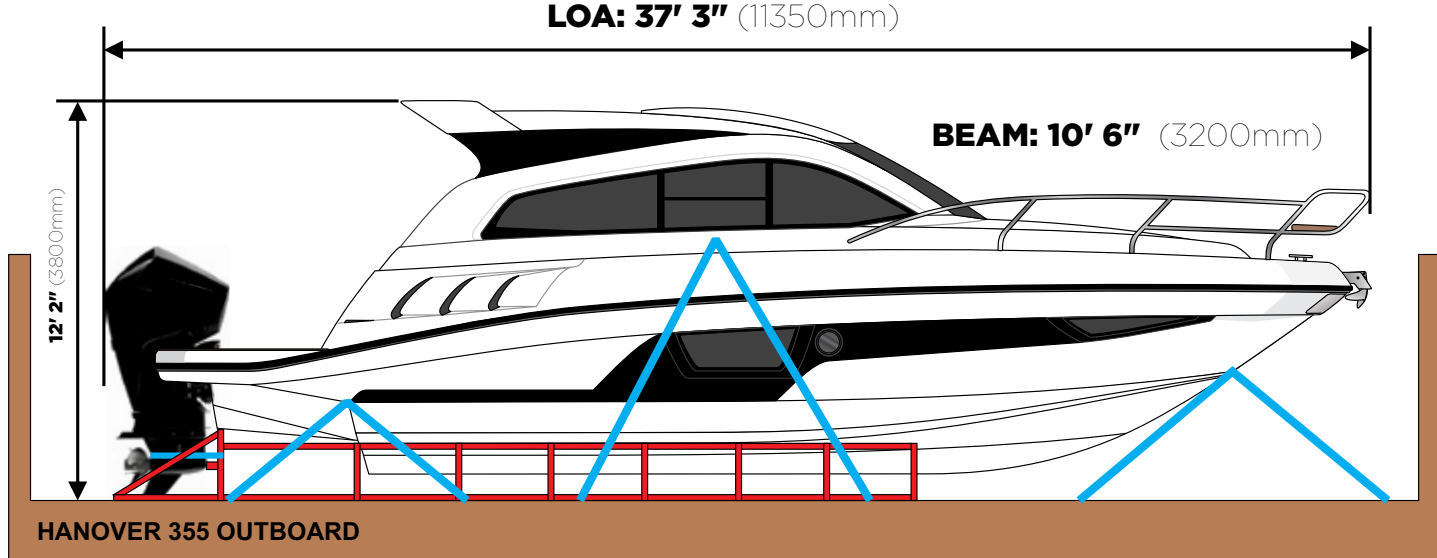
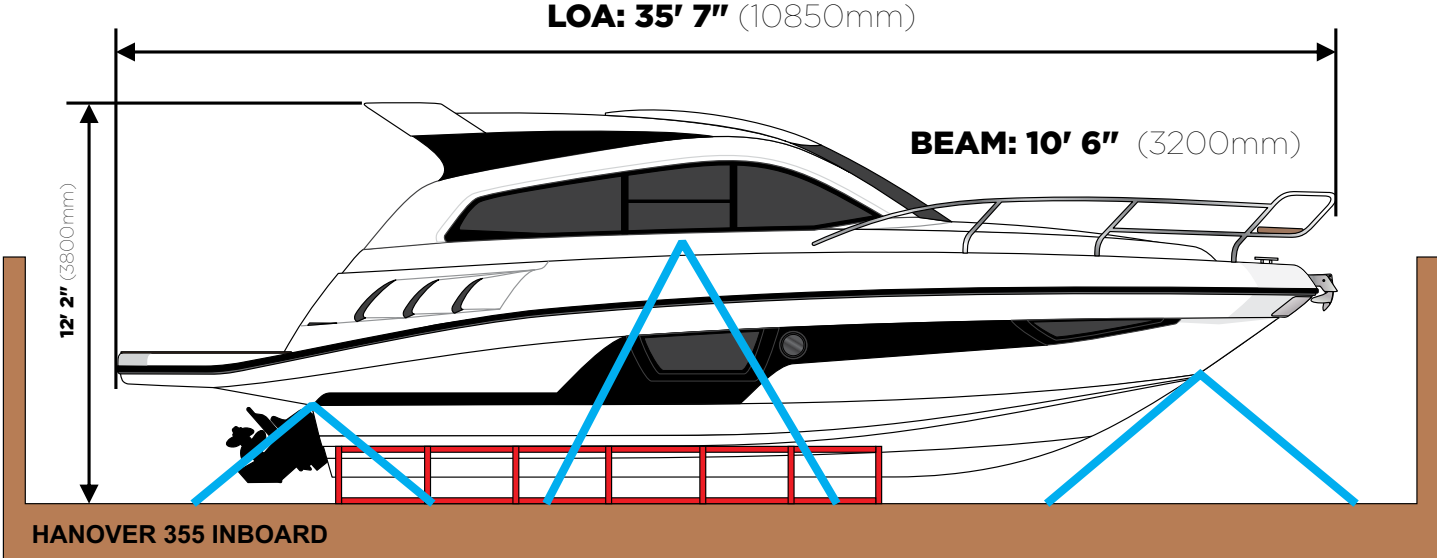


+1 954-355-9204



+1 (305) 452-0002

# SHIPPING DIMENSIONS





# HANOVER OWNERSHIP PROGRAM

---

At Hanover, we ensure an exciting stress-free experience from the moment you discover our brand.

## **STRESS-FREE PRICING**

Our entire lineup comes at our lowest price - no haggling needed. Leave the negotiations to used car salesmen, and enjoy a straightforward buying experience with us.

## **FIRST TRIP**

We've got you covered! You'll receive thorough training, and a captain will accompany you until you feel fully confident at the helm. Enjoy the experience like a pro!

## **MAINTENANCE AND WARRANTY**

Every Hanover vessel includes a 5-Year Premier Level Hull Warranty, 1 Year General, Mechanical and Components Warranty, All Accessories & Electrical Parts Under The Original Manufacturer's Warranty.

Cruise with complete confidence knowing you have a team of dedicated professionals at your service.

**Don't just own a boat, be part of the Hanover Lifestyle.**

*Hanover*

*Hanover*

[www.hanoveryachts.com](http://www.hanoveryachts.com)