




*Hanover* / 387

hanoveryachts.com / 2025



**First impressions Count, but you don't have to worry about that.**

The Hanover 387 has a sumptuous feel and a Hard-Top that stands out, delivering comfort, the greatest design, and durability, making your voyage truly unforgettable.

**MAKE MEMORIES LAST.**

---

*Hanover*

---



*Hanover* 387

2021



*Hanover* 387

2025



# TECHNICAL SPECIFICATIONS



## LENGTH OVERALL

37' 3" / 11.35 m



## BEAM

10' 10" / 3.30 m



## DRAFT

33" / 0.8m



## DRY WEIGHT

16,093 lbs / 7,300 kg



## FUEL TANK CAPACITY

265 gal / 946 L



## WATER TANK CAPACITY

50 gal / 190 L



## HOLDING TANK

20 gal / 75 L



## CAPACITY

15 day / 5 Night



## CRUISING SPEED

22-24 mph / 31.3 kph



## WIDE OPEN THROTTLE

43-45 mph / 69.2-72.4 kph



## DEADRISE

16°



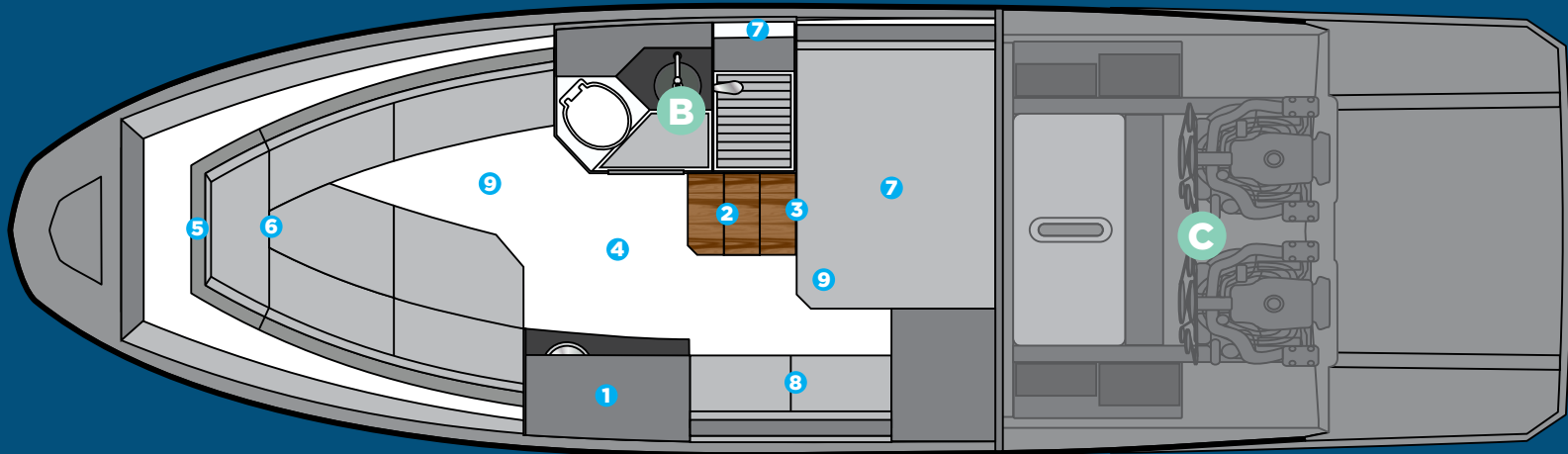
## BRIDGE CLEARANCE

10' 7" / 3.2 m  
12' 7" / 3.8 m with radar  
or anchor light



## A CABIN

- 1 Kitchen with sink, synthetic granite top, space for microwave, induction stove, fridge, 3 drawers and two cabinets
- 2 Stainless steel staircase with 3 wide teak steps
- 3 Acrylic access sliding door with lock and key
- 4 High Quality Laminate Flooring
- 5 Decorative mirror on the bow
- 6 U-shaped sofa for 3 people that converts into a double bed, with teak retractable table
- 7 Double bed in the middle ship cabin
- 8 Sofa in the middle ship cabin
- 9 Free standing up of 9' in cabin center



## B BATHROOM

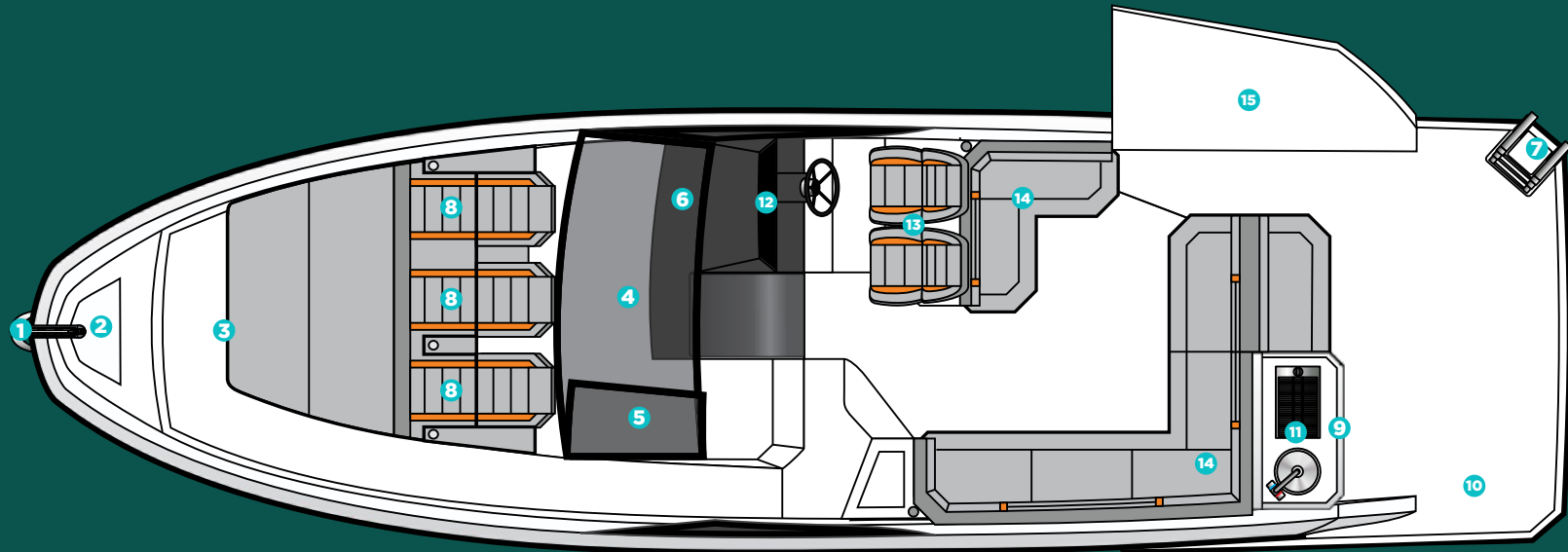
- Electric toilet with 22 gallon waste box, macerator pump and external nozzle
- Cabinet with two doors, sink in synthetic granite with bowl overlaid in tempered glass
- Air cabinet with two mirrored doors
- Decorative coating with glass inserts
- Shower box free standing height 6'2" /1,88 min
- Tempered glass box
- Shower with mixer
- Non-slip floor

## C ENGINE

- Interior in gray gelcoat
- Non-slip sole, flat
- Insulation, acoustic and thermal
- Fire extinguisher
- Compartment, sealed, for air conditioning
- Compartment, sealed, for batteries
- Exhaust fans (2)
- Engine room hatch
- Access door with gas pistons and lock
- Fuel tank, aluminum, with level gauge

# HULL AND COCKPIT

- 1 bow eye
- 2 Stainless steel handrail with teak seat in the bow
- 3 20" hatch in the bow from cabin to bow area
- 4 4 panoramic tempered glass windows
- 5 2 tilting tempered glass windows in the cockpit
- 6 Tempered glass windshield and anodized aluminum frame
- 7 4-step telescopic ladder on platform
- 8 Triple bow solarium with adjustable backrest
- 9 Handle stainless steel in the gourmet space



- 10 Teak table
- 11 Gourmet space with top lid and sink
- 12 Instrument panel that supports up to two 9" electronics with built-in compass
- 13 Dual rider seat with standing or sitting
- 14 Two L-shaped sectional sofa in the cockpit and another in the stern
- 15 Electric Opening Lateral Deck - Beach Club System



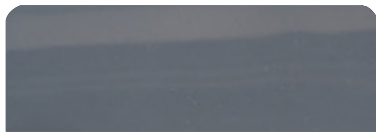


**CUSTOMIZE AND  
HAVE THE MOST UNIQUE  
VESSEL AT SEA**

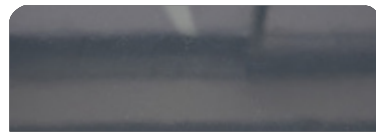


# EXTERIOR PAINT OPTIONS

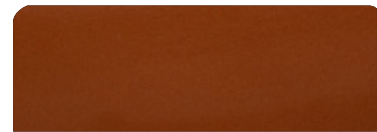
All options are available in either a high-gloss or matte finish.



Moonstone Gray



Pure Gray



Orange Pearl



Spring Blue



Orkney Gray



Ice Silver



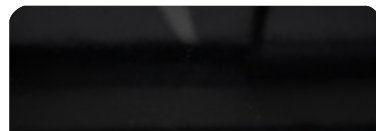
Moscou Red



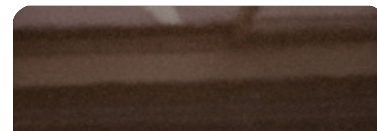
Heraldic Blue



Crayon Gray



Gales Black (Tuxedo)



Marrakesh Brown



Macaw Blue



# UPHOLSTERY OPTIONS



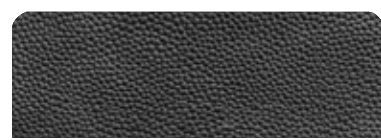
Fern



Terracota



Caramello



Black



Land Rover



Taupe



Ivory



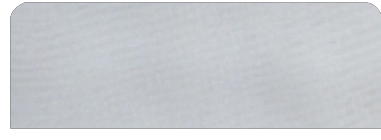
Orange



Off White



Gray



Silver



Carbon Fiber



White



Beige



Matelasse Honeycomb



New Corolla



Blue



Corolla

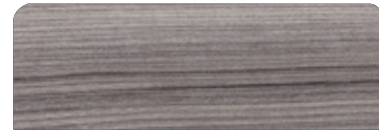
# FURNITURE VINYL OPTIONS



Salina



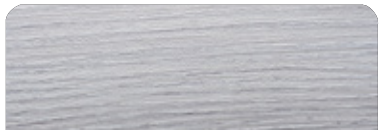
Massal



Cherry



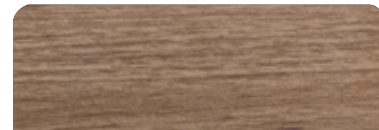
Patina



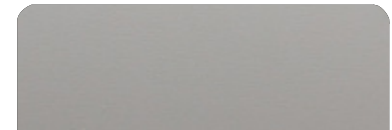
Alder



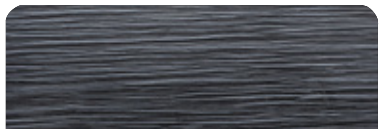
Bronze



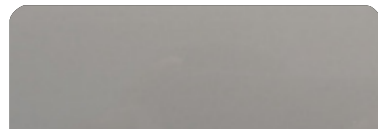
Freije



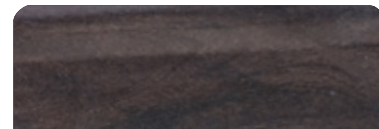
Taupe Super Matte



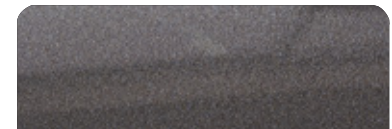
Black Line



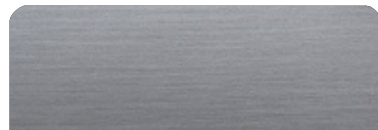
Taupe High Gloss



Canyon



Onix



Metallic



Gray Oak

# INTERIOR FLOORING OPTIONS



Alba



Sand



Gray



Almond



Cement



Duna



Pine



Imbuia



Vintage



Amendola



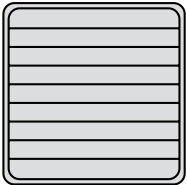
Cumaru



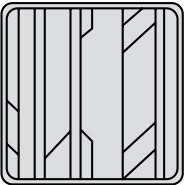
Kashmir

# DECK FLOORING OPTIONS

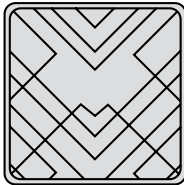
## PATTERNS



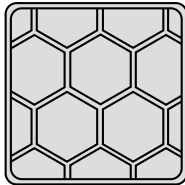
Classic



Aztec



Imperial

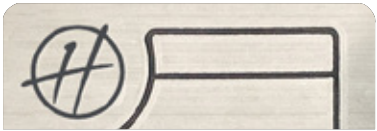


Beehive

## EVA



Madeira



Gray



Ocher

## SYNTHETIC TEAK



Madeira



Gray



Sand



# PREMIUM COMFORT

---

There's plenty of room for sunbathing on the bow and a hangout area at the stern, so bring your friends and family; there's only good times on the HANOVER 387.

With the Hard-Top you have convenience and privacy to feel more comfortable while at sea.

Create and share memories that will last a lifetime.  
The choice is yours.







*Hanover* 387

2025

# STANDARD EQUIPMENT

## HULL AND DECK

- 8" through bolted stainless steel cleats (06 count)
- 1 bow eye
- 2 eyes at the stern
- Stainless steel handrail with teak seat in the bow
- Self-draining floor
- 20" hatch in the bow from cabin to bow area
- 4 panoramic tempered glass windows
- 2 tilting tempered glass windows in the cockpit
- Tempered glass windshield and anodized aluminum frame
- 4-step telescopic ladder on platform
- Double bow solarium with adjustable backrest
- Handle stainless steel in the gourmet space
- Compartment for fenders on the platform floor
- 5 compartments below the cockpit seats
- Teak table
- Upholstery in anti-mold leather
- Gourmet space with top lid and sink
- Hard-Top
- Storage, acrylic
- Acrylic cup holder in the cockpit
- Instrument panel that supports up to two 9" electronics with built-in compass
- Dual rider seat with standing or sitting
- Two seating areas in the cockpit
- Cooler
- Garbage Displacement
- Electric Opening Lateral Deck - Beach Club System

## HEAD

- Electric toilet with 22 gallon waste box, macerator pump and external nozzle
- Cabinet with two doors, sink in synthetic granite with bowl overlaid in tempered glass
- Air cabinet with two mirrored doors
- Decorative coating with glass inserts
- Shower with mixer
- Tempered glass box
- Shower box free standing height 6'2" /1,88 m
- Non-slip floor

## CABIN

- Acrylic access sliding door with lock and key
- Stainless steel staircase with 3 wide teak steps
- Ultra moisture resistant MDF furniture
- Kitchen with sink, synthetic granite top, space for microwave, induction stove, fridge, 3 drawers and two cabinets
- High Quality Laminate Flooring
- Decorative mirror on the bow
- U-shaped sofa for 3 people that converts into a double bed, with teak retractable table
- Double bed in the middle ship cabin
- Sofa in the middle ship cabin
- Coverings in waterproof fabric or anti-mold nautical leather
- Side walls covered with anti-mold foam and nautical leather
- Luxury layette kit with 10 pillows
- Free standing up of 9' in cabin center

## ENGINE ROOM

- Interior in gray gelcoat
- Non-slip sole, flat
- Insulation, acoustic and thermal
- Fire extinguisher
- Compartment, sealed, for air conditioning and batteries
- Exhaust fans (2)
- Engine room hatch
- Access door with gas pistons and lock
- Fuel tank, aluminum, with level gauge

## PUMPS AND TANKS

- Water tank, potable, 50 gal
- Fresh water pump
- Bilge pumps, engine room, with automatic switches
- Bilge pump, amidships, with automatic switch
- Collection box for shower with pump
- Showerhead, aft, with mixer

## ELECTRICAL

- Circuit breaker board
- Selector switch for pier/generator/inverter
- Electrical panel in the cockpit with special switches
- Navigation lights
- Anchoring lights
- Indirect LED lighting on the cockpit ceiling, bathroom, cabin, cabinet and under the sofas and dashboard
- LED spotlights on the cabin and cockpit ceiling
- Lighting in the engine room
- 120v sockets in the cockpit, cabin and bathroom
- 12v / USB sockets on the dashboard and in the cabin
- Shore power socket
- Individual master switches for accessory batteries and motors

## OPTIONS INCLUDED

- Synthetic teak or EVA on bow, cockpit and swim platform
- Sound system
- Anchor Windlass Electric System
- Anchor, 22 lbs, with chain
- VHF Radio w/ Antenna
- Sunroof, electric opening
- Holding tank with macerator
- Air conditioning, 12,000 BTU
- Generator
- Refrigerator,
- Trim tabs, electric
- Spotlights
- Shorepower
- Gourmet Area

# ESSENTIAL

PACKAGE

## TWIN MERCURY MERCUISER AXIUS 300HP W/ JOYSTICK PILOTING

# PREMIUM

PACKAGE

## TWIN MERCURY MERCUISER AXIUS 350HP W/ JOYSTICK PILOTING

Engine

GPS

Sound System

Exterior Painting

A/C

Refrigerator

VHF Radio

Power Generator Kohler® 6KVA

Complete EVA Flooring

Anchor Windlass Electric System

Electric Trim Tabs (Flaps)

Fenders & Lines

USCG Boating Safety Kit

Shore Power + Shore Cord 50A

Macerator Pump and Holding Tank

GPS SIMRAD® GO7 (7")

BOSS® SOUND SYSTEM +  
6 JBL® Marine Speakers + Amplifier

1 Color (Hull)

12,000 BTU (Cabin)

Refrigerator - 110V

Uniden® VHF Radio w/ Antenna



GPS SIMRAD® GO9 (9")

FUSION® SOUND SYSTEM +  
6 Marine Speakers + Amplifier

2 Colors or More  
(Hull, Deck or HT)

12,000 + 6,000 BTU  
(CABIN - COCKPIT)

ISOTHERM® 65L FRIDGE 12V

SIMRAD® VHF RADIO W/ ANTENNA



Galvanic Isolator (Electrical Protection)	✓	✓
Windshield Wipers	✓	✓
Heavy Duty Folding Table (Cockpit)	✓	✓
Electric Opening Sunroof	✓	✓
Power Charger 100A	✓	✓
Italian Steering Wheel	✓	✓
Headlights w/ Remote (Cruising Spotlight)		✓
LED 24" TV Set and Mounting		✓
Design Items Set (Pillows, Beddings, Cushions, Towels, Accessories)		✓
Teak Table On Stern (Platform Extra Table)		✓
Bar Stools/chairs On Stern (Kit Of 2 Banquets)		✓
Hot Water System - Heater (Shower)		✓
Induction Electric Stove (Cabin)		✓

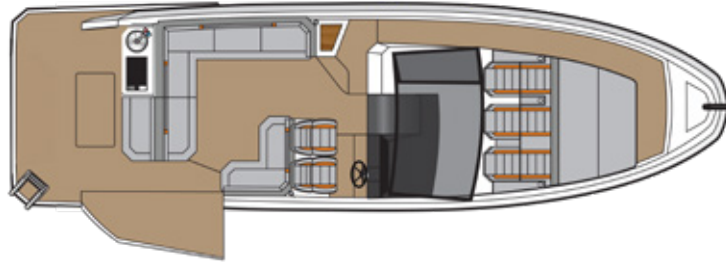
**\$447,915**

**\$480,115**

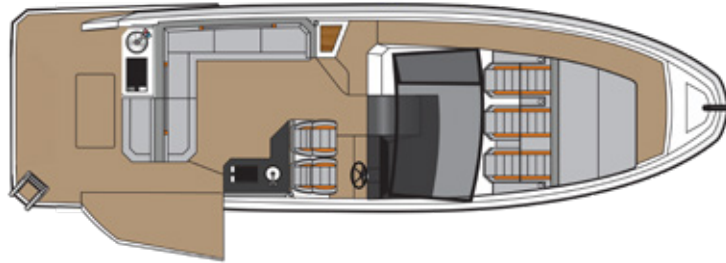


# LAYOUT OPTIONS

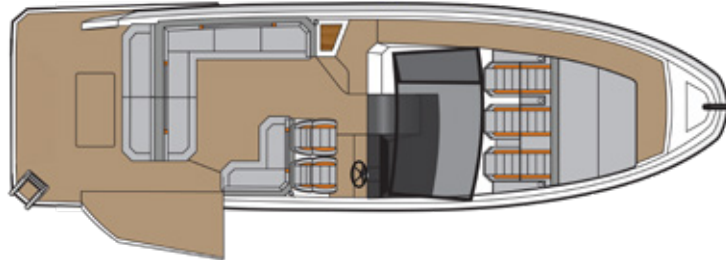
Aft-Grill  
**Included**



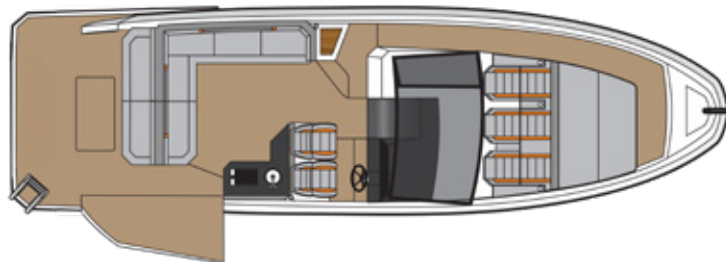
Starboard Kitchen  
and Aft-Grill  
**\$3,350**



Aft-Sundeck  
**\$3,750**



Starboard Kitchen  
and Aft-Sundeck  
**\$4,550**



# UPGRADES

**PREMIUM** Got ESSENTIAL but want more?  
Upgrade to our PREMIUM options.

**PREMIUM+** Got PREMIUM but want more?  
Upgrade to our PREMIUM+ options.

## ENGINES

Mercury® Twin Mercruiser Axius 350hp W/ Joystick Piloting	\$6,000 PREMIUM
Mercury® Twin Mercruiser Axius 380hp W/ Joystick Piloting	\$9,975 PREMIUM+
Mercury® Twin Mercruiser Axius 320hp - Diesel	\$30,000 PREMIUM+
Mercury® Twin Mercruiser Axius 350hp - Diesel	\$45,000 PREMIUM+
Volvo® Twin D4 320hp Diesel	\$80,000 PREMIUM+
Volvo® Twin D6 380hp Diesel	\$94,500 PREMIUM+

## VESSEL VIEW

Mercury® Vessel View 4"	\$2,995
Mercury® Vessel View 5"	\$3,250
Mercury® Vessel View 7"	\$3,950
Mercury® Vessel View 9"	\$4,500

## NAVIGATION

Raymarine® Element 7s (7")	\$2,250
Raymarine® Axiom 9" (Including Interface And Connections With Engines)	\$4,950
Raymarine® Axiom 12" (Including Interface And Connections With Engines)	\$7,950
SIMRAD® Go7 (7")	\$3,200
SIMRAD® Go9 (9")	\$4,395
SIMRAD® Nss12 (12")	\$6,950 PREMIUM+
SIMRAD® Nss16 (16")	\$8,450 PREMIUM+
GARMIN® 9"	\$4,995
GARMIN® 12"	\$8,750

## SOUND SYSTEM

Fusion® Marine Sound System Kit + 6 Marine Speakers + Amplifier	\$1,800 PREMIUM
JL Audio® Kit 1 - Media Master + 6 Speakers + Amp	\$2,000 PREMIUM+
JL Audio® Kit 2 - Media Master + 8 Speakers + Amp + Subwoofer	\$5,000 PREMIUM+

## SOUND ADD-ON

JBL® Marine Speakers (Extra Pair)	\$695
Fusion® Marine Speakers (Extra Pair)	\$895
JBL® Marine Amplifier (Extra) (2 Channels)	\$1,395
Fusion® Marine Amplifier (Extra) (2 Channels)	\$1,595

## ENCLOSURE & SHADE

Electric Aft Shade (Stobag)	\$5,200
Manual Aft Shade (Stobag)	\$3,950
Manual Aft Shade W/ 2 Poles	\$2,950
Bow Tent (Bimini Top On Bow)	\$2,450
Eisenglass Enclosure	\$5,500
Mid Ship Cabin Room Enclosure (Wood/door)	\$4,500
Main Cabin Room Enclosure (Wood/door)	\$6,500

## AIR CONDITIONING

A/C System - 6,000 BTU (Cockpit)	\$4,750 PREMIUM
A/C System - 9,000 BTU (Cockpit)	\$1,150 PREMIUM+
A/C System - 16,000 BTU (Cabin)	\$500 PREMIUM
A/C System - 25,000 BTU (Cabin)	\$4,000 PREMIUM+

## DRIVER AIDES

MC² Quick Gyro Stabilizers (X10)	\$46,500
Bow Thruster	\$14,000
Head Lights With Remote (Cruising Spotlight)	\$1,350
SIMRAD® Radar Halo20+	\$6,750
Raymarine® Radar Quantum II	\$7,250
GARMIN® Radar	\$7,750
SIMRAD® VHF Radio W/ Antenna	\$1,295
Humphree® Automatic Trim Tabs	\$5,295
Zipwake® Automatic Trim Tabs	\$9,950
FLIR® Night Vision	\$5,500

## DESIGN & PROTECTION

Design Items Set (Pillows, Beddings, Cushions, Towels, Accessories)	\$4,250
Set of Weatherized Exterior Seat Covers	\$3,500
Dashboard Cover (Helm)	\$495
Snap-on Canvas Cover	\$3,500
Leather Cover Panel (Dashboard Top Part)	\$1,250
Leather Cover Panel (Complete Dashboard & Helm)	\$3,495
RGB Changing Lights (Cockpit)	\$2,750
LED Mirror Upgrade (Bathroom)	\$950
Underwater Lights (Pair)	\$1,895
Upgraded Upholstery (Italian Fabric)	\$3,800

## ELECTRONICS

Microwave Oven	\$795
Kenyon® Electric Grill (Stern)	\$3,750
Induction Electric Stove (Cabin)	\$795 PREMIUM
LED 24" TV Set And Mounting	\$1,095 PREMIUM
Isotherm® 65L Fridge 12v	\$3,695
Refrigerated 12v Drawer (Cockpit)	\$2,950
Isotherm Ice Maker (Cabin)	\$3,975 PREMIUM
Hot Water System - Heater (Shower)	\$3,700 PREMIUM
Additional USB Extra Socket	\$350

## POWER

Kohler® 9KW Power Generator	\$2,500 PREMIUM
Kohler® 11KW Power Generator	\$6,000 PREMIUM+

## FLOORING

Standard Fiberglass Flooring (Cockpit, Platform, Bow)	-\$3,200
Synthetic Teak Flooring (Cockpit, Platform, Bow)	\$995



## SEATING & TABLE

Teak Table On Stern (Platfrom Extra Table)	\$975 PREMIUM
Adjustable Driver Single Seat - Electric	\$3,065
Adjustable Driver Single Seat - Manual	\$1,395
Bar Stools/chairs On Stern (Kit Of 2 Banquets)	\$1,250 PREMIUM
Upholstered Bar Stools/chairs On Stern (Kit Of 2 Banquets)	\$500 PREMIUM+

## ADDITIONAL OPTIONS

Fireboy® - Advanced Anti-fire System	\$9,500
Boat Trailer	\$19,000
External Double Painting (2 Or More Colors, Hull, Deck Or Ht)	\$5,500 PREMIUM
Botton Paint - Antifoul Coppercoat Paint	\$9,500
Livewell (Cockpit)	\$1,950
Removable Ladder (Beach Club)	\$825
Hydraulic Underwater Swim Platform	\$28,000
Fun Deck Electric Stairs On Platform (Stern)	\$19,500

# HANOVER OWNERSHIP PROGRAM

---

At Hanover, we ensure an exciting stress-free experience from the moment you discover our brand.

## **STRESS-FREE PRICING**

Our entire lineup comes at our lowest price - no haggling needed. Leave the negotiations to used car salesmen, and enjoy a straightforward buying experience with us.

## **FIRST TRIP**

We've got you covered - you will get training and your first cruise comes with a captain by your side (up to 4 hours). Feel like a pro and make the most of your experience!

## **MAINTENANCE AND WARRANTY**

Every Hanover vessel includes a 5-Year Premier Level Hull Warranty, 1 Year General, Mechanical and Components Warranty, All Accessories & Electrical Parts Under The Original Manufacturer's Warranty.

Sail with complete confidence knowing you have a team of dedicated professionals at your service.

**Don't just own a boat, be part of the Hanover Lifestyle.**

*Hanover*

*Hanover*

[www.hanoveryachts.com](http://www.hanoveryachts.com)