



Hanover / **355**

hanoveryachts.com / **2024**





TECHNICAL SPECIFICATIONS



LENGTH

35' 10" / 10.7 m



BEAM

10' 5" / 3.2 m



DRAFT

34" / 0.8 m



DRY WEIGHT

15,145 lbs / 6,870 kg



FUEL TANK CAPACITY

250 gal / 946 L



WATER TANK CAPACITY

50 gal / 190 L



HOLDING TANK

20 gal / 75 L



CAPACITY

14 day / 4 Night



CRUISING SPEED

22-24 mph / 31.3 kph



WIDE OPEN THROTTLE

43-45 mph / 69.2-72.4 kph



DEADRISE

16°



BRIDGE CLEARANCE

10' 2" / 3 m
12' 2" / 3.7 m with radar
or anchor light

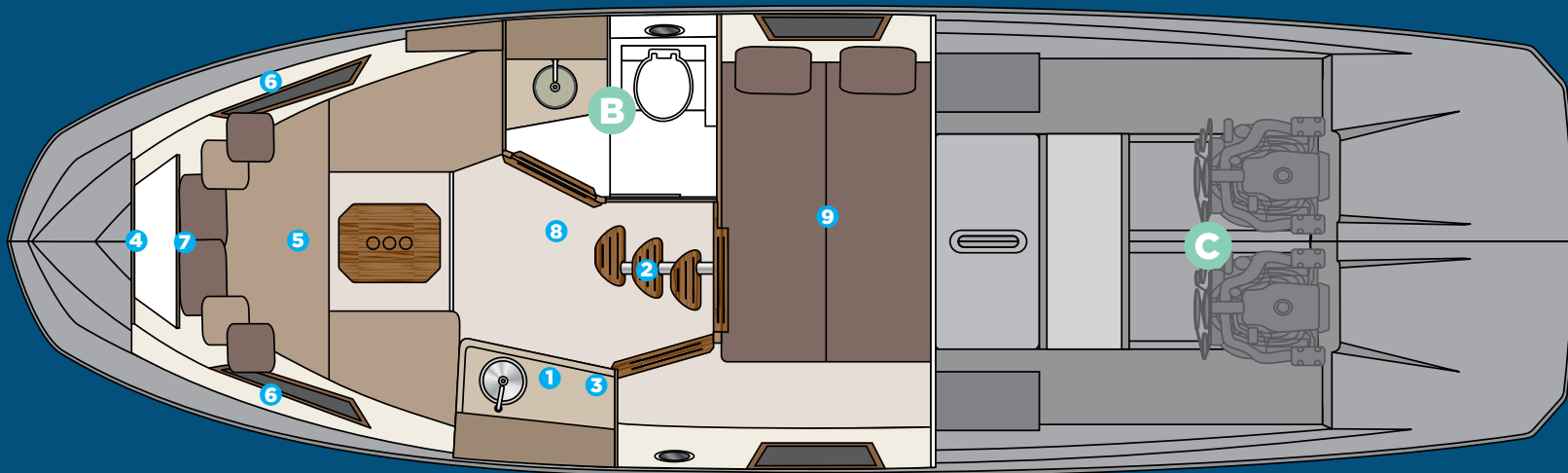


Hanover 355

2024

A CABIN

- 1 Kitchen with sink, synthetic granite top, space for microwave, induction stove, fridge, 3 drawers and two cabinets
- 2 Stainless steel staircase with 3 wide teak steps
- 3 Storage under sink
- 4 Decorative mirror on the bow
- 5 U-shaped sofa for 3 people convertibles into a double bed, with teak retractable table
- 6 Shelves in the bow bed
- 7 Luxury layette kit with 10 cushions
- 8 Free standing up of 9' in cabin center
- 9 2 x single beds convertible to a King size bed.



B BATHROOM

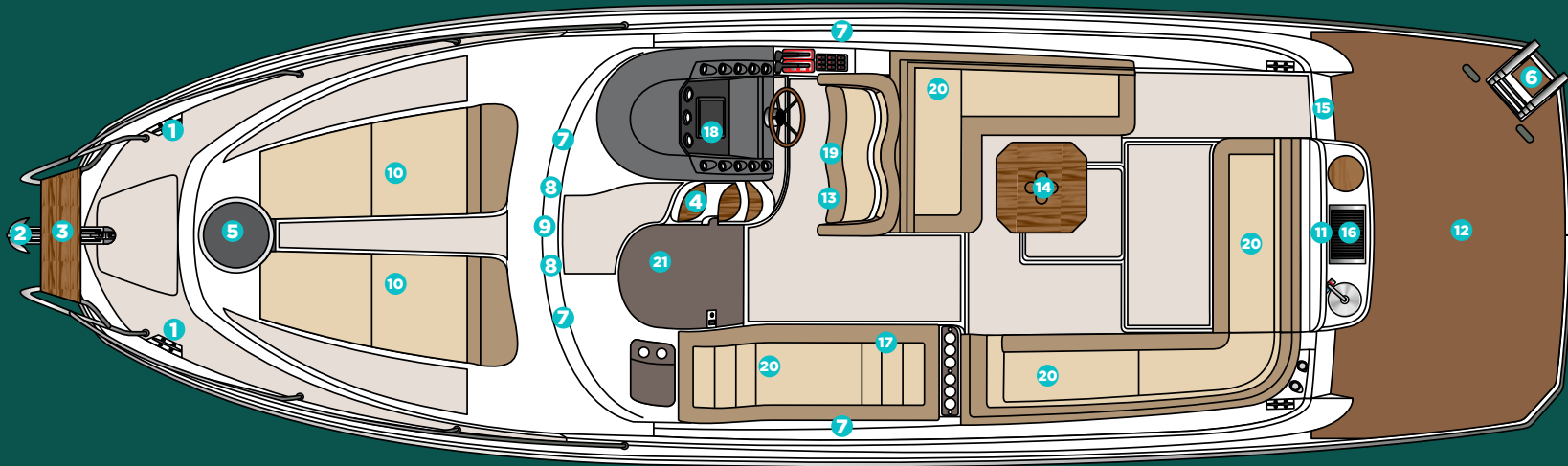
- Electric toilet with 22 gallon waste box, macerator pump and external nozzle
- Cabinet with two doors, sink in synthetic granite with bowl overlaid in tempered glass
- Air cabinet with two mirrored doors
- Decorative coating with glass
- Shower box free standing height 6'2" /1,88 min
- Tempered glass box
- Shower with mixer
- Non-slip floor

C ENGINE

- Interior in gray gelcoat
- Non-slip sole, flat
- Insulation, acoustic and thermal
- Fire extinguisher
- Compartment, sealed, for air conditioning
- Compartment, sealed, for batteries
- Exhaust fans (2)
- Engine room hatch
- Access door with gas pistons and lock
- Fuel tank, aluminum, with level gauge

HULL AND COCKPIT

- 1** 8" through bolted stainless steel cleats (O6 count)
- 2** Anchor
- 3** Stainless steel handrail with teak seat in the bow
- 4** Teak steps to the bow
- 5** 20" hatch in the bow from cabin to bow area
- 6** 4-step telescopic ladder on platform
- 7** 4 panoramic tempered glass windows
- 8** 2 tilting tempered glass windows in the cockpit
- 9** Tempered glass windshield and anodized aluminum framebow area
- 10** Double bow solarium with adjustable backrest
- 11** Handle stainless steel in the gourmet space
- 12** Compartment for fenders on the platform floor



- 13** 5 compartments below the cockpit seats
- 14** Teak table
- 15** Acrylic hutch
- 16** Gourmet space with top lid and sink
- 17** Acrylic cup holder in the cockpit
- 18** Instrument panel that supports up to two 9" electronics with built-in compass
- 19** Dual rider seat with standing or sitting
- 20** Two seating areas in the cockpit and L-shaped sectional sofa in the stern
- 21** Acrylic access sliding door with lock and key

The image shows the interior of a motor yacht, viewed from the stern looking forward. In the foreground, there is a large, white, rectangular hot tub with a silver handle and a circular logo on the front. Behind the hot tub, there are several rows of grey upholstered seating with black and white striped cushions. The yacht has a white hull with black trim around the windows and doors. The ceiling is white with recessed lighting. In the background, the helm station is visible with a steering wheel and various instruments. The overall atmosphere is clean, modern, and luxurious.

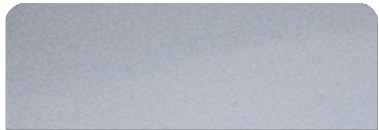
**CUSTOMIZE AND
HAVE THE MOST UNIQUE
VESSEL AT SEA**

Hanover 355

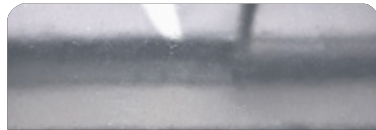
2024



EXTERIOR PAINT OPTIONS



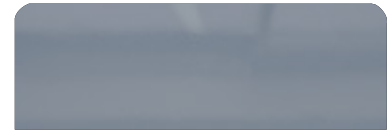
Grigio Silver



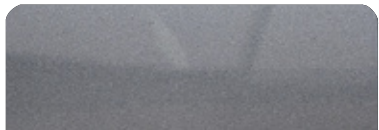
Tungsten Silver



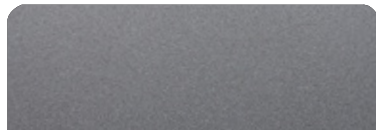
Pure Gray



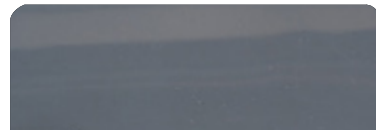
Nardo Gray



Orkney Gray (Highgloss)



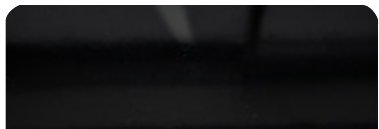
Orkney Gray (Matte)



Moonstone Gray



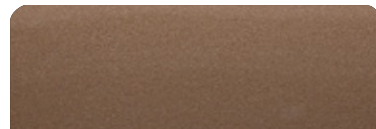
Sequin Blue



Gales Black (Tuxedo) (Highgloss)



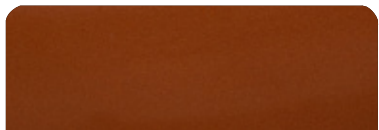
Gales Black (Tuxedo) (Matte)



Havanna Brown



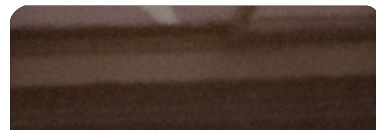
Heraldic Blue



Orange Pearl



Moscou Red



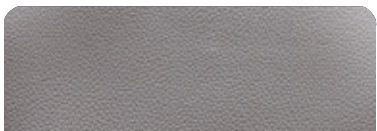
Marrakesh Brown



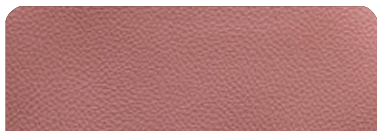
Macaw Blue



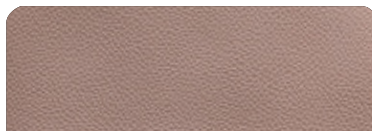
UPHOLSTERY OPTIONS



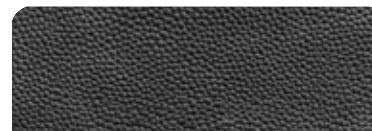
Fern



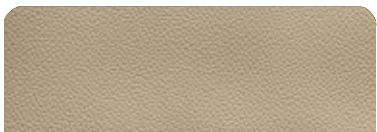
Terracota



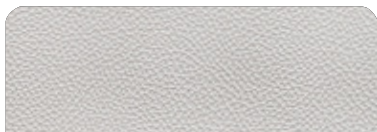
Caramello



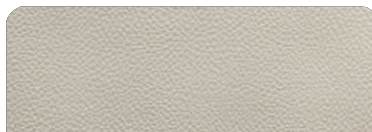
Black



Land Rover



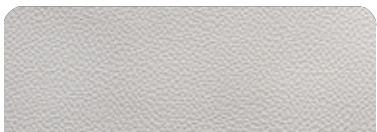
Taupe



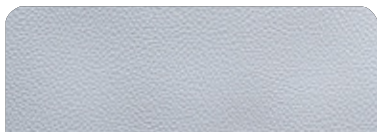
Ivory



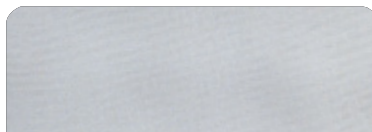
Orange



Off White



Gray



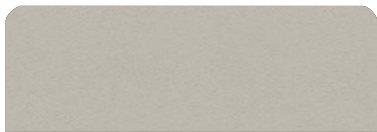
Silver



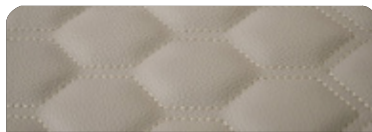
Carbon Fiber



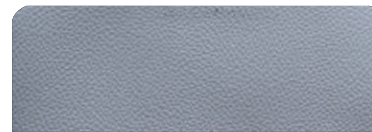
White



Beige



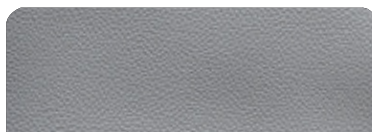
Matelasse Honeycomb



New Corolla



Blue

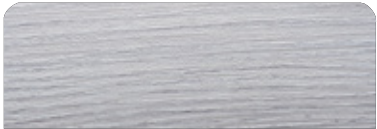


Corolla

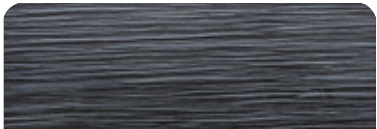
FURNITURE VINYL OPTIONS



Salina



Alder



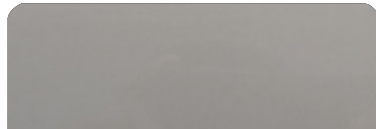
Black Line



Massal



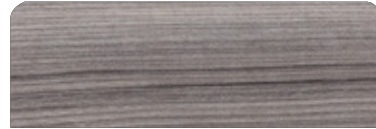
Bronze



Taupe High Gloss



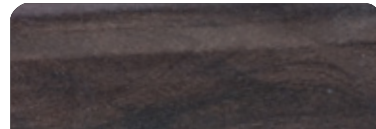
Metallic



Cherry



Freije



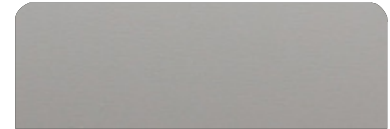
Canyon



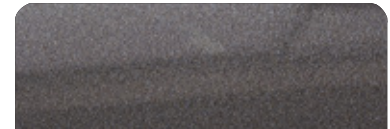
Gray Oak



Patina



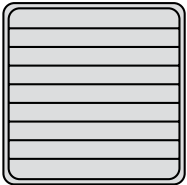
Taupe Super Matte



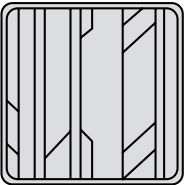
Onix

DECK FLOORING OPTIONS

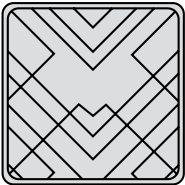
PATTERNS



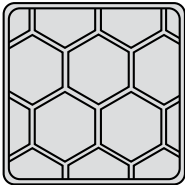
Classic



Aztec



Imperial



Beehive

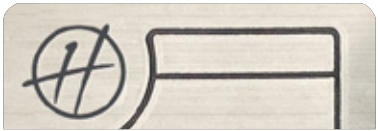
EVA



Tuscany



Ocher



Gray

SYNTHETIC
TEAK



Gray



Madeira



Sand

INTERIOR PAINT OPTIONS



Ivory Beige



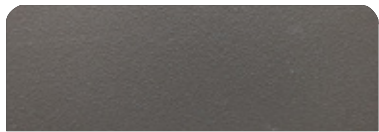
Mist Beige



Corolla Gray



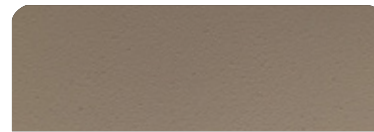
Black



Terra Brown



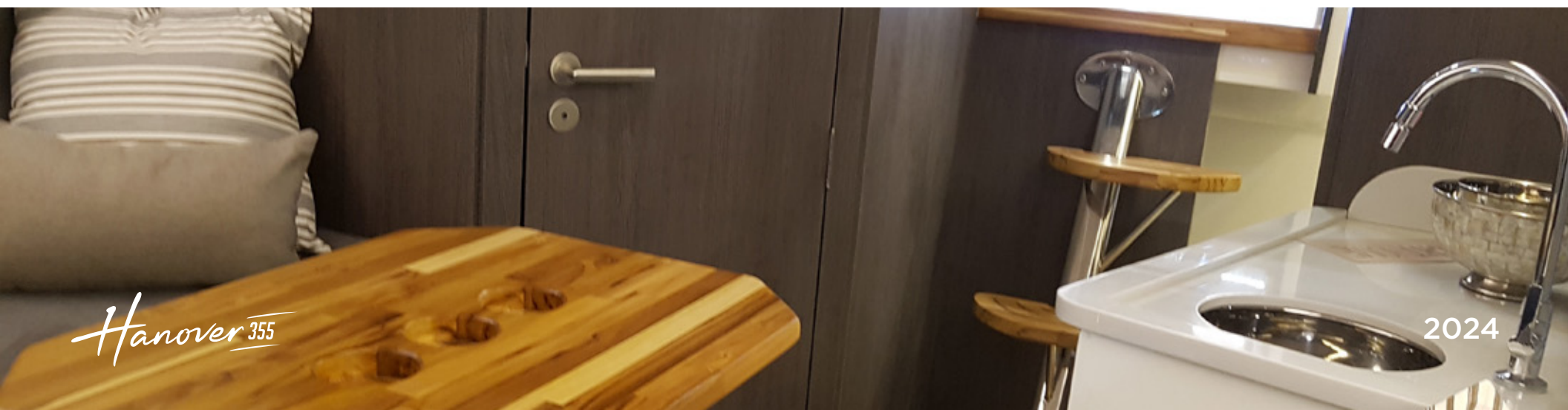
White



Land Rover



Compass Gray





Hanover 355



2024

STANDARD EQUIPMENT

HULL AND DECK

- Hardtop
- Cleats, 8" thru-bolted stainless steel
- Bow eye, two at stern
- Handrail, stainless steel with teak seat in the bow
- Floor, self-draining
- Hatch in the bow from cabin to bow area
- Windows, panoramic tempered glass
- Windows, tilting tempered glass, cockpit
- Windshield, tempered glass with anodized aluminum frame
- Ladder, 4-step telescopic, swim platform
- Sunbathing area, bow, with adjustable backrest
- Fender storage, platform sole
- Storage compartments below the cockpit seats
- Teak table
- Upholstery in anti-mold leather
- Gourmet cooking space with sink, and cutting board
- Hutch, acrylic
- Cup holder, acrylic, cockpit
- Instrument panel with built-in compass, supports up to two 9" electronics
- Seat, dual passenger, standing or sitting
- Seating areas (2), cockpit
- Sofa, L-shaped sectional, stern

HEAD

- Head, marine electric, with 20 gal holding tank and macerator
- Cabinet with doors
- Sink, synthetic granite & tempered glass
- Vanity with mirrored doors
- Shower with tempered glass stall
- Sole, non-slip

CABIN

- Sofa, U-shaped, converts to double bed
- Teak table, retractable
- Access door, sliding, with lock
- Staircase, stainless steel, with wide teak steps
- Furniture, ultra moisture resistant
- Galley with sink, refrigerator, synthetic granite top, stove, drawers & cabinets
- Shelves, forward bed
- Mirror, decorative
- Coverings in waterproof fabric or anti-mold nautical leather
- Side walls covered with anti-mold foam and nautical leather
- Basic bedding kit with ten pillows

ENGINE ROOM

- Interior in gray gelcoat
- Non-slip sole, flat
- Insulation, acoustic and thermal
- Fire extinguisher
- Compartment, sealed, for air conditioning and batteries
- Exhaust fans (2)
- Engine room hatch
- Access door with gas pistons and lock
- Fuel tank, aluminum, with level gauge

PUMPS AND TANKS

- Water tank, potable, 50 gal
- Fresh water pump
- Bilge pumps, engine room, with automatic switches
- Bilge pump, amidships, with automatic switch
- Collection box for shower with pump
- Showerhead, aft, with mixer

ELECTRICAL

- Circuit breaker board
- Selector switch for dock/generator/inverter
- Electrical panel, cockpit
- Lights, navigation
- Lights, anchoring
- Lighting, indirect LED, throughout
- Spotlights, LED, cabin and cockpit ceiling
- Lighting, engine room
- Outlets, 120V, in the cockpit, cabin and head
- Outlets, 12V / USB, dashboard and cabin
- Shore power connection
- Master switches, individual, for accessory batteries and engines
- Battery charging relay, automatic
- Emergency departure
- Batteries (2), engines
- Battery, generator

OPTIONS INCLUDED

- Synthetic teak or EVA on bow, cockpit and swim platform
- Sound system
- Anchor Windlass Electric System
- Anchor, 22 lbs, with chain
- VHF Radio w/ Antenna
- Sunroof, electric opening
- Holding tank with macerator
- Air conditioning, 12,000 BTU
- Generator
- Refrigerator, galley
- Trim tabs, electric
- Spotlights
- Shorepower
- Inverter and charger system + internal AC
- Gourmet Area

ESSENTIAL PACKAGE

PREMIUM PACKAGE

TWIN MERCURY MERCUISER AXIUS 250HP DTS

TWIN MERCURY MERCUISER AXIUS 300HP W/ JOYSTICK PILOTING

Engine

GPS

Sound System

Exterior Painting

Power Generator

A/C

Refrigerator

Power Charger 100A

VHF Radio w/ Antenna

Synthetic Teak or EVA Flooring

Electric Anchor Windlass System

Electric Trim Tabs (Flaps)

Fenders & Lines

USCG Boating Safety Kit

Shore Power + Shore Cord 50A

Macerator Pump and Holding Tank

GPS SIMRAD® GO7 (7")

BOSS® SOUND SYSTEM +
6 JBL® Marine Speakers + Amplifier

1 Color (Hull)

ONAN® 5KVA

12,000 BTU (Cabin)

Standard Refrigerator



GPS SIMRAD® GO9 (9")

FUSION® SOUND SYSTEM +
6 Marine Speakers + Amplifier

2 Colors or More
(Hull, Deck or HT)

KOHLER® 6KVA

16,000 + 6,000 BTU
(Cabin - Cockpit)

ISOTHERM® Fridge 12V



Windshield Wipers	✓	✓
Galvanic Isolator (Electrical Protection)	✓	✓
Cradle for Transport	✓	✓
Electric Opening Sunroof	✓	✓
Headlights w/ Remote (Cruising Spotlight)		✓
Mosaic / Glass Cover (Kitchen Wall)		✓
LED 24" TV Set and Mounting		✓
Italian Steering Wheel		✓
Hot Water System - Heater (Shower)		✓
Induction Electric Stove (Cabin)		✓
Bar Stools/chairs On Stern (Kit Of 2 Banquets)		✓
Teak Table On Stern (Platform Extra Table)		✓
Design Items Set (Pillows, Beddings, Cushions, Towels, Accessories)		✓

\$359,000

\$405,000



ADDITIONAL UPGRADES



Electric Fun
Deck Platform

\$14,500



Hydraulic Underwater
Swim Platform

\$23,500



MC² Quick Gyro X10
Stabilizers

\$46,500



Raymarine
Radar Quantum I

\$6,750



Raymarine
Radar Quantum II

\$7,250



GPS Raymarine®
Element 7s (7")
(Additional Screen)

\$2,250



GPS Raymarine®
AXIOM (9")
(Additional Screen)

\$4,950



GPS Raymarine®
AXIOM (12")
(Additional Screen)

\$7,950



GPS Garmin® MAP 923xsv
NMEA & Transducer (9")
(Additional Screen)

\$4,995



GPS Garmin® MAP 1242xsv
NMEA & Transducer (12")
(Additional Screen)

\$8,750



GPS SIMRAD®
Go7 (7")
(Additional Screen)

\$3,295



GPS SIMRAD®
Go9 (9")
(Additional Screen)

\$4,350



GPS SIMRAD®
NSS12 (12")
(Additional Screen)

\$6,950



Mercury®
Vessel View (7")
(Additional Screen)

\$3,950



Mercury®
Vessel View (9")
(Additional Screen)

\$4,500

ADDITIONAL UPGRADES



Manual Aft Shade
w/ 2 Poles

\$2,950



Manual Aft Shade
(Stobag)

\$3,200



Electric Aft Shade
(Stobag)

\$4,200



Bow Tent
(Bimini Top On Bow)

\$1,250



Eisenglass
Enclosure

\$3,200



Glass Door Enclosure
For Cockpit

\$14,500



Fusion® Marine Amplifier
(Extra) (2 Channels)

\$1,595



Fusion® Marine
Speakers (Extra Pair)

\$895



JBL® Marine Amplifier
(Extra) (2 Channels)

\$1,395



JBL® Marine Speakers
(Extra Pair)

\$695



Underwater Lights
(Pair)

\$1,500



Bow
Thrusters

\$14,000



Bottom Paint
Anti-fouling Coppercoat Paint

\$9,500



Mid Ship Cabin Room
Enclosure (Wood)

\$3,750



Main Cabin Room
Enclosure (Wood)

\$4,995

ADDITIONAL UPGRADES



Leather Cover Panel
(Dashboard Top Part)

\$1,250



Leather Cover Panel
(Complete Dashboard & Helm)

\$2,995



Waterproof Dashboard
Cover (Helm)

\$550



Set of Waterproof
Exterior Seat Covers

\$2,350



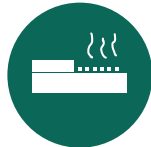
Complete Branded
Boat Nylon Cover

\$3,200



Fireboy® - Advanced
Automatic Anti-fire System

\$9,500



Kenyon Electric Grill
(Stern)

\$3,750



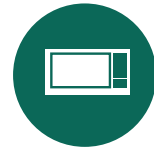
Refrigerated 12V
Drawer (Cockpit)

\$2,950



Ice Maker
(Cabin)

\$3,495



Microwave

\$750



RGB Changing Lights
(Cockpit)

\$2,750

PREMIUM UPGRADES

Got Essential but want more?
Upgrade to our **Premium** options.



Twin Mercury® Mercruiser Axis
300HP w/ Joystick Piloting

\$19,500



A/C System 6,000 BTU
(Extra Unit - Cockpit)

\$4,245



A/C System 16,000 BTU
(Upgrade from 12,000 BTU - Cabin)

\$1,200



Kohler® 6KVA
Power Generator

\$2,250



GPS SIMRAD®
Go9 (9")

\$1,250



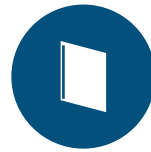
Fusion® Marine Sound System Kit
+ 6 Speakers + Amplifier

\$2,450



External Double Painting
(2 Or More Colors, Hull, Deck Or HT)

\$2,500



Mosaic / Glass Cover
(Head Wall)

\$750



LED 24" TV Set
And Mounting

\$950



Induction Electric
Stove (Cabin)

\$950



Isotherm 65L
Fridge 12v

\$2,500



Italian Steering
Wheel

\$750



Hot Water System
Heater (Shower)

\$3,950



Bar Stools/Chairs on Stern
(Kit Of 2 Banquets)

\$950



Design Items Set
(Pillows, Beddings, Cushions,
Towels, Accessories)

\$3,295

Hanover 355



Teak Table On Stern (Platform Extra Table) **\$850**

2024

PREMIUM+ UPGRADES

Got **Premium** but want more?
Upgrade to our **Premium+** options.



Twin Mercury® Mercruiser Axis
350HP w/ Joystick Piloting

\$8,975



Twin Mercury® Mercruiser
Axis 270HP Diesel

\$47,975



Twin Mercury® Mercruiser
Axis 320HP Diesel

\$59,000



Volvo Twin D4
320HP Diesel

\$79,975



Volvo Twin D6
380HP Diesel

\$99,750



A/C System
9,000 BTU (Cockpit)

\$750



External Complete
Special Paint And Or
Color Selection

\$2,950



JL AUDIO KIT 1
Media Master,
6 Speakers, AMP

\$2,050



JL AUDIO KIT 2
Media Master, 8 Speakers,
Media Controller, AMP, SUB

\$6,950



GPS SIMRAD®
NSS12 (12")

\$2,600



GPS SIMRAD®
NSO EVO3 (16")

\$4,950



Kohler® 9KVA
Power Generator

\$6,950



Kohler® 11KVA
Power Generator

\$12,950

HANOVER OWNERSHIP PROGRAM

At Hanover, we ensure an exciting stress-free experience from the moment you discover our brand.

STRESS-FREE PRICING

Our entire lineup comes at our lowest price - no haggling needed. Leave the negotiations to used car salesmen, and enjoy a straightforward buying experience with us.

FIRST TRIP

We've got you covered - you will get training and your first cruise comes with a captain by your side (up to 4 hours). Feel like a pro and make the most of your experience!

MAINTENANCE AND WARRANTY

Every Hanover vessel includes a 5-Year Premier Level Hull Warranty, 1 Year General, Mechanical and Components Warranty, All Accessories & Electrical Parts Under The Original Manufacturer's Warranty.

Sail with complete confidence knowing you have a team of dedicated professionals at your service.

Don't just own a boat, be part of the Hanover Lifestyle.

Hanover

Hanover

www.hanoveryachts.com