



*Hanover* / 347

hanoveryachts.com / 2025



Experience a unique design and functionality with the Hanover 347. Our innovative approach ensures optimal space utilization for its category, delivering intuitive features designed to enhance performance while prioritizing your comfort.

**TIME TO EXCEED EXPECTATIONS**

---

*Hanover*

---



*Hanover* 347

2025





*Hanover* 347



2025



DESIGN HANOVER ANSCHLIESSTUNG  
für Wohnraum

# TECHNICAL SPECIFICATIONS



## LENGTH

34' 7" / 10.60 m



## BEAM

9' 8" / 3 m



## DRAFT

33" / 0.8m



## DRY WEIGHT

15,145 lbs / 6,734 kg



## FUEL TANK CAPACITY

185 gal / 700 L



## WATER TANK CAPACITY

52 gal / 200 L



## HOLDING TANK

20 gal / 75 L



## CAPACITY

12 day / 4 Night



## CRUISING SPEED

22-24 mph / 31.3 kph



## WIDE OPEN THROTTLE

43-45 mph / 69.2-72.4 kph



## DEADRISE

16°



## BRIDGE CLEARANCE

9' 5" / 2.9 m

*Hanover* 347

2025



# HULL AND COCKPIT

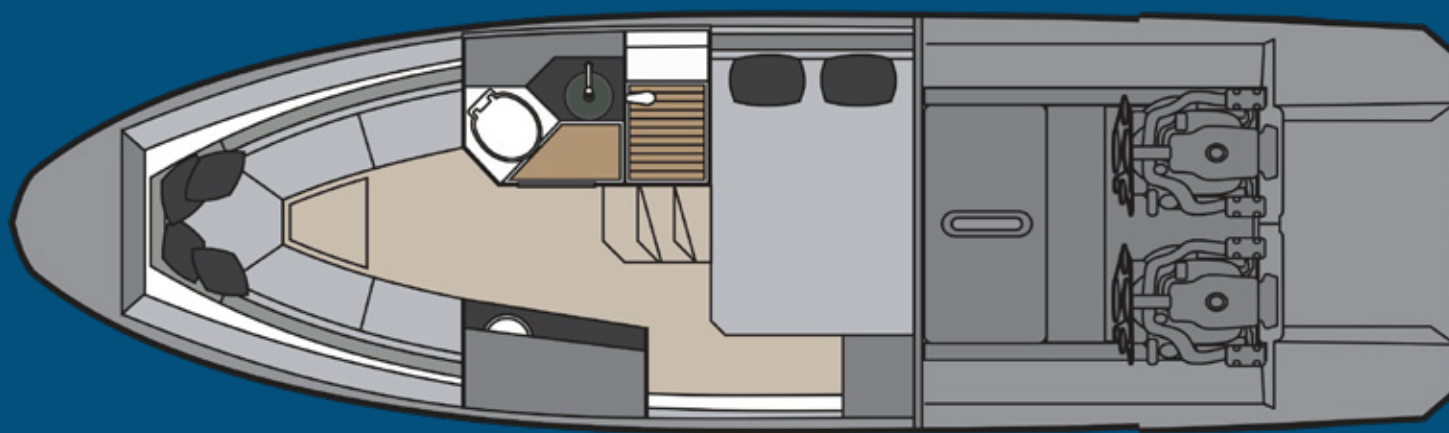
---





# CABIN

---

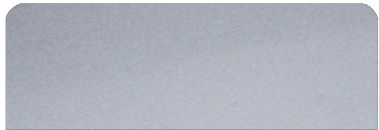


The image shows the interior of a boat cabin, likely a motor yacht. In the foreground, there is a wooden table with four circular cutouts. To the left, there is a grey upholstered seat with a dark pillow. To the right, there is a kitchen counter with a sink and a faucet. In the background, there are wooden steps leading up to a larger area, possibly a cockpit or another part of the boat. The lighting is soft and even, highlighting the clean and modern design of the interior.

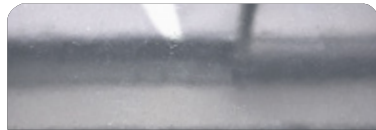
**CUSTOMIZE AND  
HAVE THE MOST UNIQUE  
VESSEL AT SEA**



# EXTERIOR PAINT OPTIONS



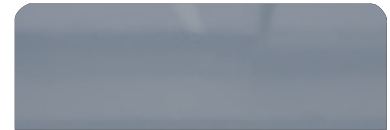
Grigio Silver



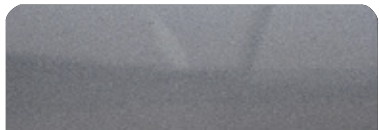
Tungsten Silver



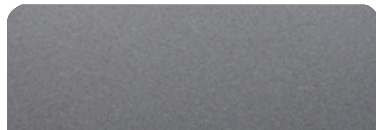
Pure Gray



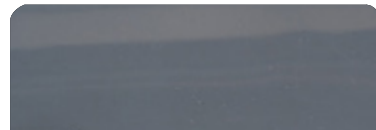
Nardo Gray



Orkney Gray (Highgloss)



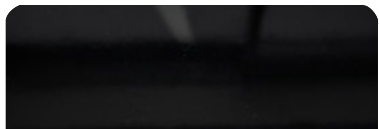
Orkney Gray (Matte)



Moonstone Gray



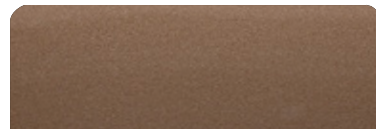
Sequin Blue



Gales Black (Tuxedo) (Highgloss)



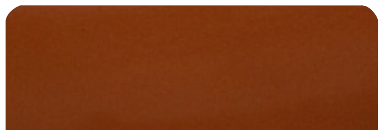
Gales Black (Tuxedo) (Matte)



Havanna Brown



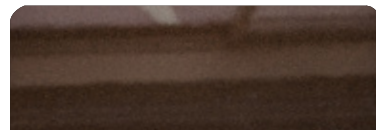
Heraldic Blue



Orange Pearl



Moscou Red



Marrakesh Brown



Macaw Blue

# UPHOLSTERY OPTIONS



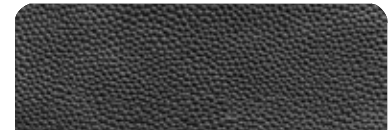
Fern



Terracota



Caramello



Black



Land Rover



Taupe



Ivory



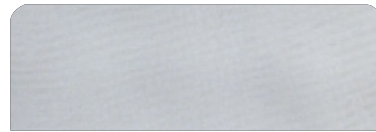
Orange



Off White



Gray



Silver



Carbon Fiber



White



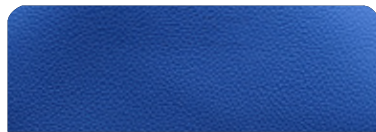
Beige



Matelasse Honeycomb



New Corolla



Blue



Corolla

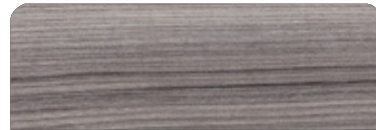
# FURNITURE VINYL OPTIONS



Salina



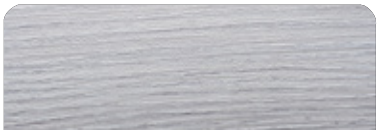
Massal



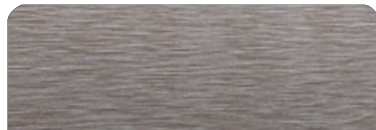
Cherry



Patina



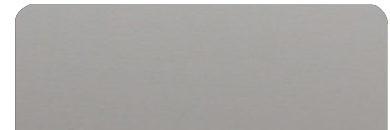
Alder



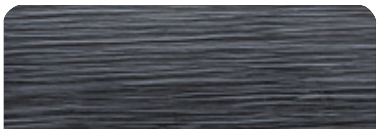
Bronze



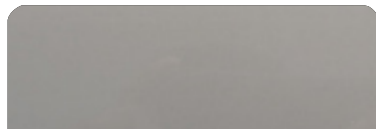
Freije



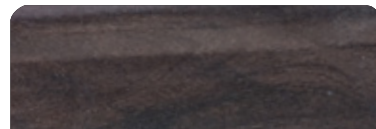
Taupe Super Matte



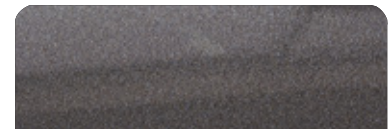
Black Line



Taupe High Gloss



Canyon



Onix



Metallic



Gray Oak

# INTERIOR FLOORING OPTIONS



Alba



Almond



Pine



Amendola



Sand



Cement



Imbuia



Cumaru



Gray



Duna



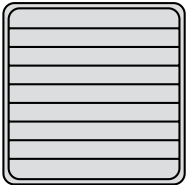
Vintage



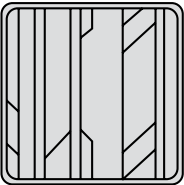
Kashmir

# DECK FLOORING OPTIONS

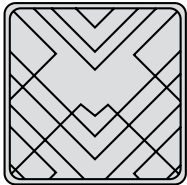
## PATTERNS



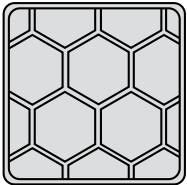
Classic



Aztec



Imperial



Beehive

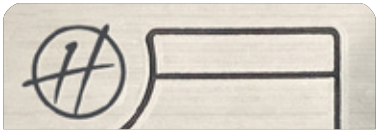
EVA



Tuscany



Ocher



Gray

SYNTHETIC  
TEAK



Gray



Madeira



Sand



# INTERIOR PAINT OPTIONS



Ivory Beige



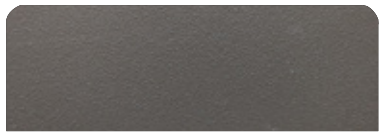
Mist Beige



Corolla Gray



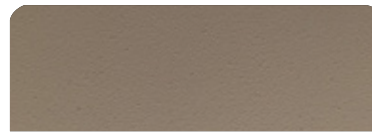
Black



Terra Brown



White



Land Rover



Compass Gray





# ONE-OF-A-KIND DESIGN

---

You'll be astounded by the generous space aboard the Hanover 347. The moment you step onboard, it becomes evident that this isn't your ordinary boat, and you'll find yourself extending your stay longer than you thought.

*Hanover*<sup>347</sup>

2025



*Hanover* 347

2025



*Hanover* 347



2025

# ESSENTIAL PACKAGE

# PREMIUM PACKAGE

## SINGLE MERCUISER 380HP DTS

## TWIN MERCUISER AXIUS 250HP W/ JOYSTICK PILOTING

Engine

GPS

Sound System

Exterior Painting

ONAN® 5KVA Generator

A/C 12,000 BTU (Cabin)

Anchor Windlass Electric System

VHF Radio w/ Antenna

Synthetic Teak or EVA Flooring

Macerator Pump and Holding Tank

Cradle for Transport

Electric Trim Tabs (Flaps)

Shore Power + Shore Cord 50A

Galvanic Isolator (Electrical Protection)

Fenders & Lines

USCG Boating Safety Kit

GPS SIMRAD® GO7 (7")

BOSS® SOUND SYSTEM +  
6 JBL® Marine Speakers + Amplifier

1 Color (Hull)



GPS SIMRAD® GO9 (9")

FUSION® SOUND SYSTEM +  
6 Marine Speakers + Amplifier

2 Colors or More  
(Hull, Deck or HT)



Windshield Wipers	✓	✓
Mosaic / Glass Cover (Kitchen Wall)		✓
Electrical Opening Beach Club		✓
Headlights w/ Remote (Cruising Spotlight)		✓
LED 24" TV Set and Mounting		✓
Induction Electric Stove (Cabin)		✓
Design Items Set (Pillows, Beddings, Cushions, Towels, Accessories)		✓
Italian Steering Wheel		✓
Hot Water System - Heater (Shower)		✓
Isotherm® 65L Fridge 12V (Cockpit)		✓
	<b>\$314,000</b>	<b>\$374,000</b>



# ADDITIONAL UPGRADES



Electric Fun Deck Platform

**\$14,500**



Hydraulic Underwater Swim Platform

**\$23,500**



MC<sup>2</sup> Quick Gyro X10 Stabilizers

**\$46,500**



Raymarine Radar Quantum I

**\$6,750**



Raymarine Radar Quantum II

**\$7,250**



GPS Raymarine® Element 7s (7")  
(Additional Screen)

**\$2,250**



GPS Raymarine® AXIOM (9")  
(Additional Screen)

**\$4,950**



GPS Raymarine® AXIOM (12")  
(Additional Screen)

**\$7,950**



GPS Garmin® MAP 923xsv NMEA & Transducer (9")  
(Additional Screen)

**\$4,995**



GPS Garmin® MAP 1242xsv NMEA & Transducer (12")  
(Additional Screen)

**\$8,750**



GPS SIMRAD® Go7 (7")  
(Additional Screen)

**\$3,295**



GPS SIMRAD® Go9 (9")  
(Additional Screen)

**\$4,350**



GPS SIMRAD® NSS12 (12")  
(Additional Screen)

**\$6,950**



Mercury® Vessel View (7")  
(Additional Screen)

**\$3,950**



Mercury® Vessel View (9")  
(Additional Screen)

**\$4,500**

# ADDITIONAL UPGRADES

---



Manual Aft Shade  
w/ 2 Poles

**\$2,950**



Manual Aft Shade  
(Stobag)

**\$3,200**



Electric Aft Shade  
(Stobag)

**\$4,200**



Bow Tent  
(Bimini Top On Bow)

**\$1,250**



Eisenglass  
Enclosure

**\$3,200**



RGB Changing Lights  
(Cockpit)

**\$2,750**



Fusion® Marine Amplifier  
(Extra) (2 Channels)

**\$1,595**



Fusion® Marine  
Speakers (Extra Pair)

**\$895**



JBL® Marine Amplifier  
(Extra) (2 Channels)

**\$1,395**



JBL® Marine Speakers  
(Extra Pair)

**\$695**



Underwater Lights  
(Pair)

**\$1,500**



Bow  
Thrusters

**\$14,000**



Bottom Paint  
Anti-fouling Coppercoat Paint

**\$9,500**



Mid Ship Cabin Room  
Enclosure (Wood)

**\$3,750**



Main Cabin Room  
Enclosure (Wood)

**\$4,995**

# ADDITIONAL UPGRADES

---



Leather Cover Panel  
(Dashboard Top Part)

**\$1,250**



Leather Cover Panel  
(Complete Dashboard & Helm)

**\$2,995**



Waterproof Dashboard  
Cover (Helm)

**\$550**



Set of Waterproof  
Exterior Seat Covers

**\$2,200**



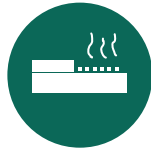
Complete Branded  
Boat Nylon Cover

**\$3,200**



Fireboy® - Advanced  
Automatic Anti-fire System

**\$9,500**



Kenyon Electric Grill  
(Stern)

**\$3,750**



Refrigerated 12V  
Drawer (Cockpit)

**\$2,950**



A/C System  
16,000 BTU (Cabin)

**\$3,495**



Microwave

**\$750**



# PREMIUM UPGRADES

Got Essential but want more?  
Upgrade to our **Premium** options.



Twin Mercury® Mercruiser Axius  
250HP w/ Joystick Piloting

**\$33,500**



Electrical Opening  
Beach Club

**\$7,500**



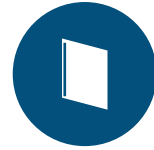
GPS SIMRAD®  
Go9 (9")

**\$1,250**



Fusion® Marine Sound System Kit  
+ 6 Speakers + Amplifier

**\$2,450**



Mosaic / Glass Cover  
(Head Wall)

**\$750**



LED 24" TV Set  
And Mounting

**\$950**



External Double Painting  
(2 Or More Colors, Hull, Deck Or HT)

**\$1,500**



Italian Steering  
Wheel

**\$750**



Design Items Set  
(Pillows, Beddings, Cushions,  
Towels, Accessories)

**\$3,295**



Induction Electric  
Stove (Cabin)

**\$950**



Isotherm 65L  
Fridge 12v (Cockpit)

**\$2,500**



Hot Water System  
Heater (Shower)

**\$3,950**

# PREMIUM+ UPGRADES

Got **Premium** but want more?  
Upgrade to our **Premium+** options.



Twin Mercury® Mercruiser  
Axius 300HP  
w/ Joystick Piloting

**\$8,975**



Twin Mercury® Mercruiser  
Axius 350HP  
w/ Joystick Piloting

**\$17,950**



Twin Mercury® Mercruiser  
Axius 380HP  
w/ Joystick Piloting

**\$26,950**



Twin Mercury® Mercruiser  
Axius 270HP Diesel  
w/ Joystick Piloting

**\$39,975**



Twin Mercury® Mercruiser  
Axius 320HP Diesel  
w/ Joystick Piloting

**\$49,975**



Twin Mercury® Mercruiser  
Axius 350HP Diesel  
w/ Joystick Piloting

**\$65,000**



Volvo Twin D4  
320HP Diesel

**\$85,975**



Volvo Twin D6  
380HP Diesel

**\$105,970**



GPS SIMRAD®  
NSS12 (12")

**\$2,600**



External Complete  
Special Paint And Or  
Color Selection

**\$2,950**



Kohler® 6KVA  
Power Generator

**\$4,950**



Kohler® 9KVA  
Power Generator

**\$9,950**



Kohler® 11KVA  
Power Generator

**\$15,950**



JL AUDIO KIT 1  
Media Master,  
6 Speakers, AMP

**\$2,050**



JL AUDIO KIT 2  
Media Master, 8 Speakers,  
Media Controller, AMP, SUB

**\$6,950**

# HANOVER OWNERSHIP PROGRAM

---

At Hanover, we ensure an exciting stress-free experience from the moment you discover our brand.

## **STRESS-FREE PRICING**

Our entire lineup comes at our lowest price - no haggling needed. Leave the negotiations to used car salesmen, and enjoy a straightforward buying experience with us.

## **FIRST TRIP**

We've got you covered - you will get training and your first cruise comes with a captain by your side (up to 4 hours). Feel like a pro and make the most of your experience!

## **MAINTENANCE AND WARRANTY**

Every Hanover vessel includes a 5-Year Premier Level Hull Warranty, 1 Year General, Mechanical and Components Warranty, All Accessories & Electrical Parts Under The Original Manufacturer's Warranty.

Sail with complete confidence knowing you have a team of dedicated professionals at your service.

**Don't just own a boat, be part of the Hanover Lifestyle.**

*Hanover*

*Hanover*

[www.hanoveryachts.com](http://www.hanoveryachts.com)