



Hanover / **415 OUTBOARD**

hanoverachts.com / 2024



With nearly 42 feet this Yacht has all the space to spend days comfortably at sea. Luxury, Privacy and Craftsmanship at its finest,

WHAT ELSE COULD YOU ASK FOR?

Hanover



Hanover 415
OUTBOARD

2024



Hanover 415
OUTBOARD

2024



Hanover 415
OUTBOARD

2024



Hanover 415
OUTBOARD

2024

TECHNICAL SPECIFICATIONS



LENGTH

43' / 13.10 m



BEAM

12' 2" / 3,70 m



DRAFT

35.4" / 0.90m



DRY WEIGHT

20,547 lbs / 9,320 kg



FUEL TANK CAPACITY

370 gal / 1192 L



WATER TANK CAPACITY

118 gal / 450 L



HOLDING TANK

20 gal / 75 L



CAPACITY

14 day / 5 Night



CRUISING SPEED

25-27 mph / 40-43 kmh
Range: 27 mph - 37 gal/h
Idle: 6 mph - 15.5 gal/h (aprox.)



WIDE OPEN THROTTLE

40-45 mph / 64-72 kmh
Range: 45 mph - 75 gal/h



DEADRISE

17°



BRIDGE CLEARANCE

10'4" / 3.2 m
12'4" / 3.8 m with accessories

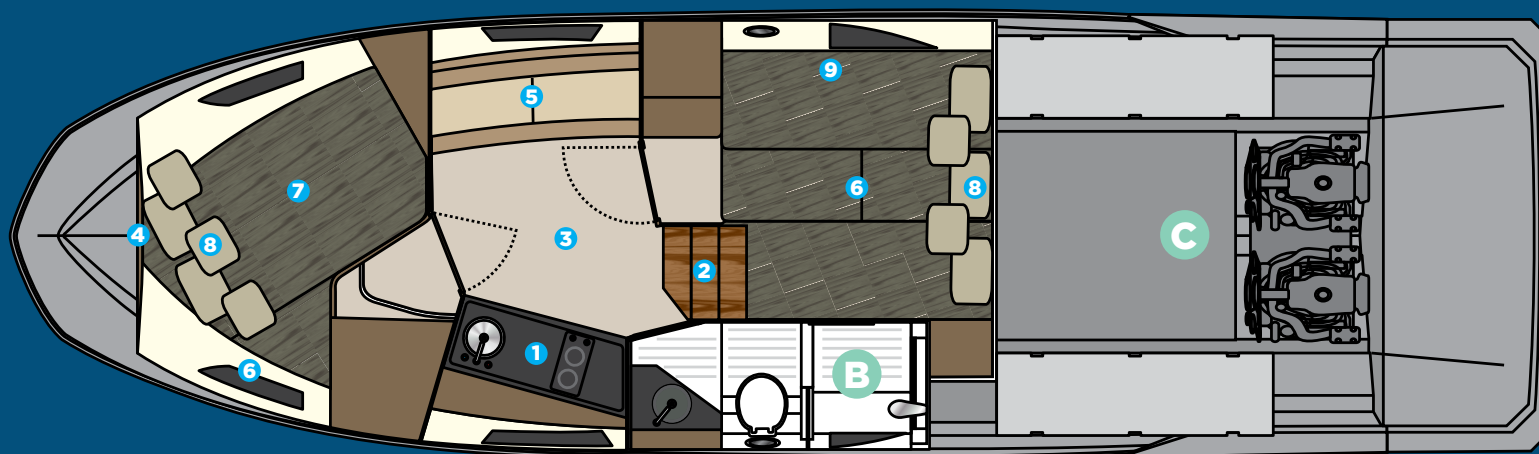


Hanover 415
OUTBOARD

2024

A CABIN

- 1 Kitchen with sink, synthetic granite top, space for microwave, induction stove, fridge, 3 drawers and 3 cabinets
- 2 Staircase with 3 wide teak steps
- 3 Vinilic special flooring
- 4 Decorative mirror on the bow
- 5 Sofa for 3 people with Teak table
- 6 Sofa for 3 people convertibles into a double bed in the Middle ship cabin
- 7 Couple bed in the bow cabin
- 8 Luxury layette kit with 10 pillows



B BATHROOM

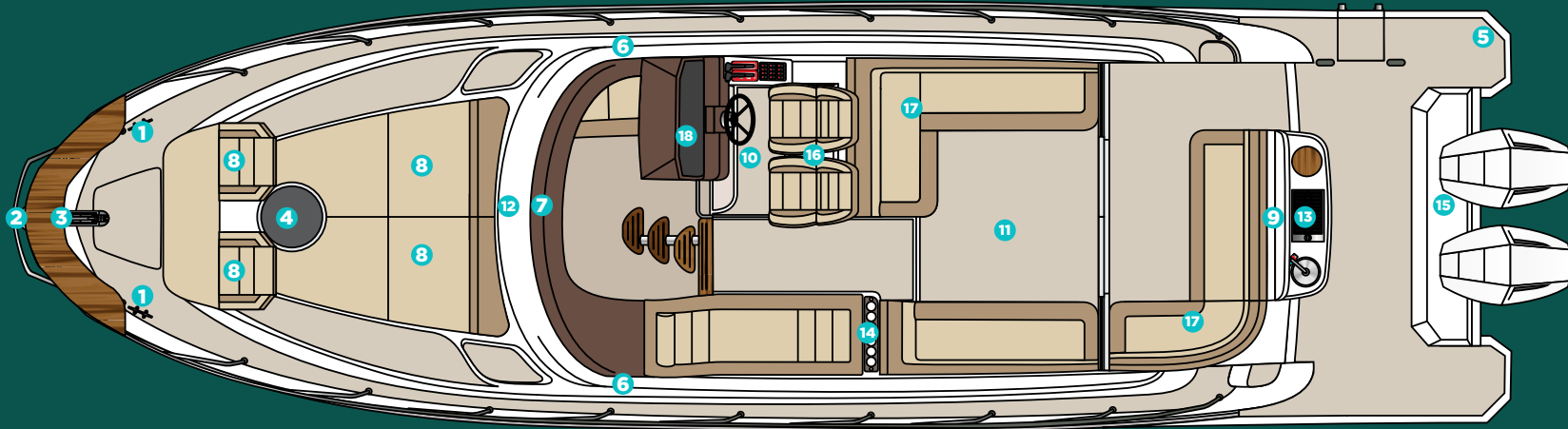
- Electric toilet with 22 gallon waste box, macerator pump and external nozzle
- Cabinet with four doors, sink in synthetic granite with bowl overlaid in tempered glass
- Air cabinet with four mirrored doors
- Decorative coating with glass inserts
- Shower box free standing height 6'2" /1,88 min
- Tempered glass box
- Shower with mixer
- Non-slip floor

C ENGINE

- Interior in gray gelcoat
- Non-slip sole, flat
- Insulation, acoustic and thermal
- Fire extinguisher
- Compartment, sealed, for air conditioning
- Compartment, sealed, for batteries
- Exhaust fans (2)
- Engine room hatch
- Access door with gas pistons and lock
- Fuel tank, aluminum, with level gauge

HULL AND COCKPIT

- 1** 8" through bolted stainless steel cleats (06 count)
- 2** 1 bow eye
- 3** Stainless steel handrail with teak seat in the bow
- 4** 20" hatch in the bow from cabin to bow area
- 5** 4-step telescopic ladder on platform
- 6** 6 panoramic tempered glass windows
- 7** Tempered glass windshield and anodized aluminum frame
- 8** 4 adjustable sunpads on the bow
- 9** Handle stainless steel in the gourmet space



- 10** 4 compartments below the cockpit seats
- 11** Teak table
- 12** Teak steps to the bow
- 13** Gourmet space with top lid, sink and grill place
- 14** Acrylic cup holder in the cockpit
- 15** Compartment for fenders on the platform floor
- 16** Dual rider seat with standing or sitting
- 17** Two seating areas in the cockpit
- 18** Instrument panel that supports up to two 9" electronics with built-in compass

A photograph of the stern of a boat, showing three outboard motors. The central motor has a prominent wooden throttle plate. The motors are white with black accents. The background is a vast, blue ocean under a clear sky. The text "CUSTOMIZE AND HAVE THE MOST UNIQUE VESSEL AT SEA" is overlaid in the center in a bold, white, sans-serif font.

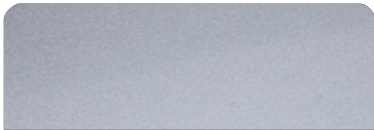
**CUSTOMIZE AND
HAVE THE MOST UNIQUE
VESSEL AT SEA**

Hanover 415
OUTBOARD

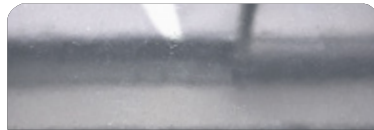
2024



EXTERIOR PAINT OPTIONS



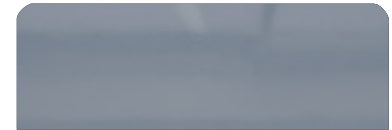
Grigio Silver



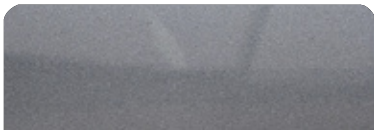
Tungsten Silver



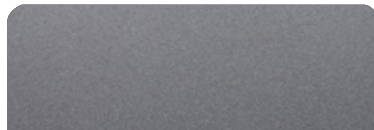
Pure Gray



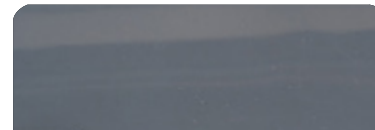
Nardo Gray



Orkney Gray (Highgloss)



Orkney Gray (Matte)



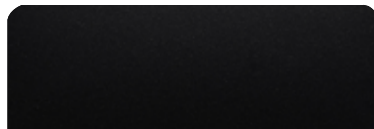
Moonstone Gray



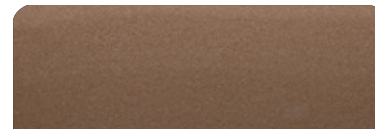
Sequin Blue



Gales Black (Tuxedo) (Highgloss)



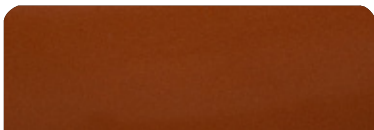
Gales Black (Tuxedo) (Matte)



Havanna Brown



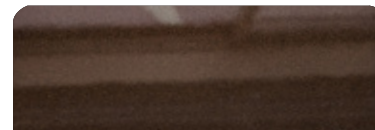
Heraldic Blue



Orange Pearl



Moscou Red



Marrakesh Brown



Macaw Blue

UPHOLSTERY OPTIONS



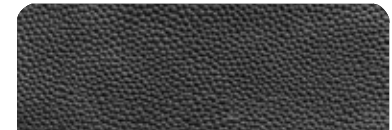
Fern



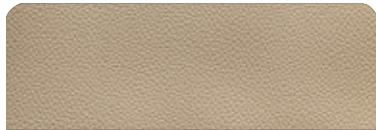
Terracota



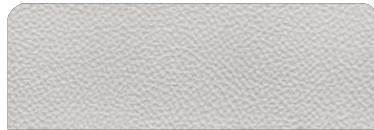
Caramello



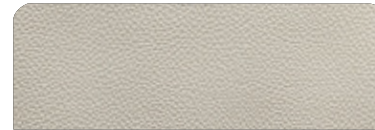
Black



Land Rover



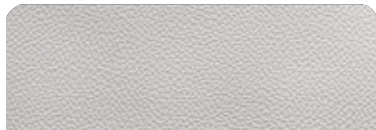
Taupe



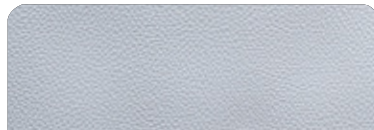
Ivory



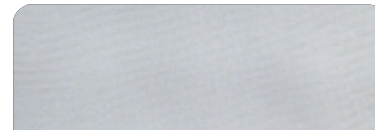
Orange



Off White



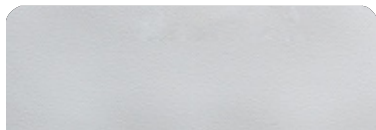
Gray



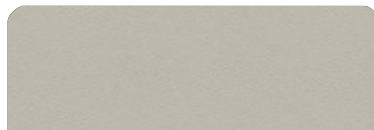
Silver



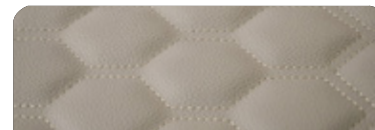
Carbon Fiber



White



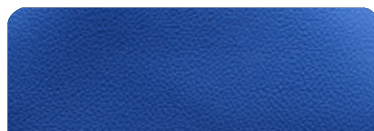
Beige



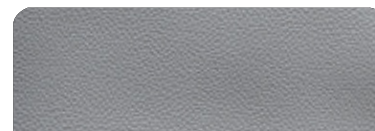
Matelasse Honeycomb



New Corolla



Blue



Corolla

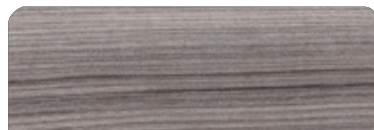
FURNITURE VINYL OPTIONS



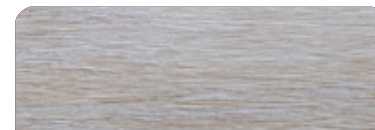
Salina



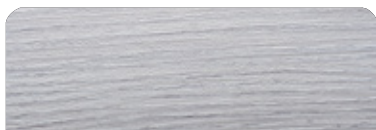
Massal



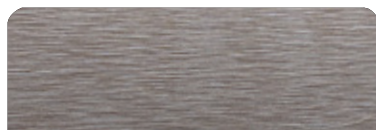
Cherry



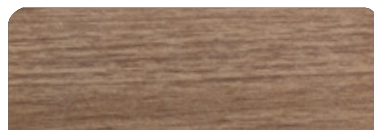
Patina



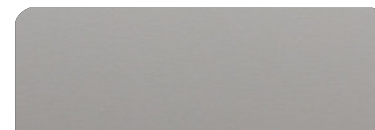
Alder



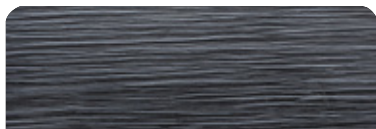
Bronze



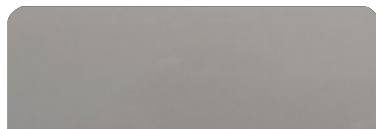
Freije



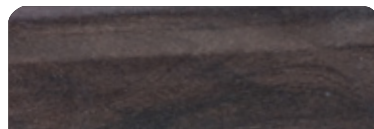
Taupe Super Matte



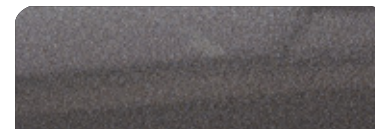
Black Line



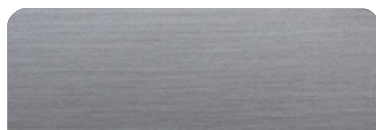
Taupe High Gloss



Canyon



Onix



Metallic



Gray Oak

INTERIOR FLOORING OPTIONS



Alba



Almond



Pine



Amendola



Sand



Cement



Imbuia



Cumaru



Gray



Duna



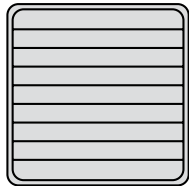
Vintage



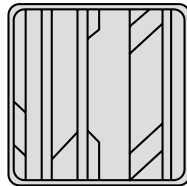
Kashmir

DECK FLOORING OPTIONS

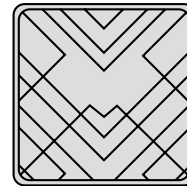
PATTERNS



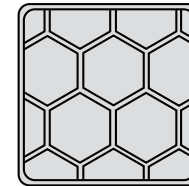
Classic



Aztec

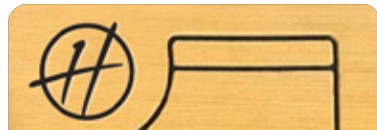


Imperial

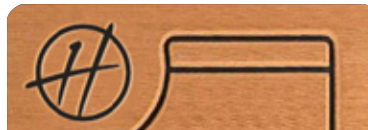


Beehive

EVA



Tuscany



Ocher

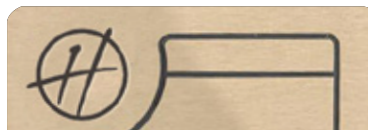


Gray

SYNTHETIC TEAK



Gray

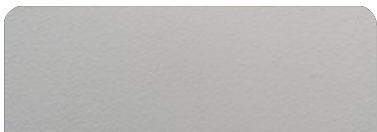


Madeira

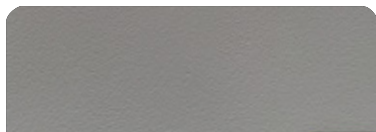


Sand

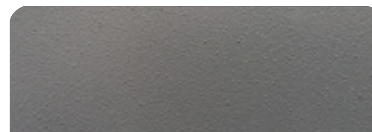
INTERIOR PAINT OPTIONS



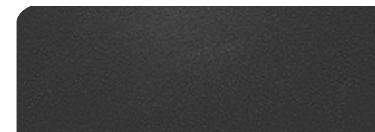
Ivory Beige



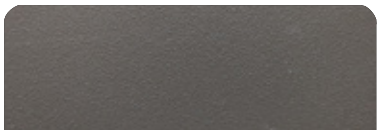
Mist Beige



Corolla Gray



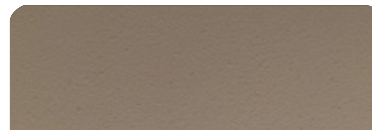
Black



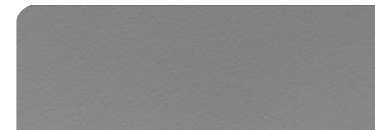
Terra Brown



White



Land Rover



Compass Gray



Hanover 415
OUTBOARD

2024

STANDARD EQUIPMENT

HULL AND DECK

- 8" through bolted stainless steel cleats
- (06 count)
- 1 bow eye
- 2 eyes at the stern
- Stainless steel handrail with teak seat in the bow
- Self-draining floor
- 20" hatch in the bow from cabin to bow area
- 6 panoramic tempered glass windows
- Tempered glass windshield and anodized aluminum frame
- 4-step telescopic ladder on platform
- Double bow solarium with adjustable backrest
- Handle stainless steel in the gourmet space
- Compartment for fenders on the platform floor
- 4 compartments below the cockpit seats
- Teak table
- Upholstery in anti-mold leather
- Gourmet space with top lid, sink, cooler, cutting board and grill place
- Hard-Top with electric opening
- Acrylic cup holder in the cockpit
- Instrument panel that supports up to two 9" electronics with built-in compass
- Dual rider seat with standing or sitting
- Two seating areas in the cockpit
- Garbage Displacement

PUMPS AND TANKS

- Water tank, potable
- Fresh water pump
- Bilge pumps, engine room, with automatic switches
- Bilge pump, at midships, with automatic switch
- Collection box for shower with pump
- Showerhead, aft, with mixer

CABIN

- Staircase with 3 wide teak steps
- Ultra moisture resistant MDF furniture
- Kitchen with sink, synthetic granite top, space for microwave, induction stove, fridge, 3 drawers and 3 cabinets
- Vinilic special flooring
- Decorative mirror on the bow
- Sofa for 3 people with Teak table
- Sofa for 3 people convertibles into a double bed in the Middle ship cabin
- Couple bed in the bow cabin
- Coverings in waterproof fabric or anti-mold nautical leather
- Side walls covered with anti-mold foam and nautical leather
- Luxury layette kit with 10 pillows

ENGINE ROOM

- Interior in gray gelcoat
- Non-slip sole, flat
- Insulation, acoustic and thermal
- Fire extinguisher
- Compartment, sealed, for air conditioning and batteries
- Exhaust fans (2)
- Engine room hatch
- Access door with gas pistons and lock
- Fuel tank, aluminum, with level gauge

HEAD

- Electric toilet with 22 gallon waste box, macerator pump and external nozzle
- Cabinet with four doors, sink in synthetic granite with bowl overlaid in tempered glass
- Air cabinet with four mirrored doors
- Decorative coating with glass inserts
- Shower with mixer
- Tempered glass box
- Shower box free standing height 6'2" /1,88 m
- Non-slip floor

ELECTRICAL

- Circuit breaker board
- Selector switch for pier/generator/inverter
- Electrical panel in the cockpit with special switches
- Navigation lights
- Anchoring lights
- Indirect LED lighting on the cockpit ceiling, bathroom, cabin, cabinet and under the sofas and dashboard
- LED spotlights on the cabin and cockpit ceiling
- Lighting in the engine room
- 120v sockets in the cockpit, cabin and bathroom
- 12v / USB sockets on the dashboard and in the cabin
- Shore power socket
- Individual master switches for accessory batteries and motors 2023

OPTIONS INCLUDED

- Synthetic teak or EVA on bow, cockpit and swim platform
- Sound system
- Anchor Windlass Electric System
- Anchor, 22 lbs, with chain
- VHF Radio w/ Antenna
- Sunroof, electric opening
- Holding tank with macerator
- Air conditioning, 12,000 BTU
- Generator
- Refrigerator
- Trim tabs, electric
- Spotlights
- Shorepower
- Gourmet Area
- T-Top with an electric sunroof

ESSENTIAL PACKAGE

**TWIN MERCURY® VERADO 350HP
OUTBOARDS W/ JOYSTICK PILOTING**

PREMIUM PACKAGE

**TWIN MERCURY® VERADO 400HP V10
OUTBOARDS W/ JOYSTICK PILOTING**

Engine		
GPS	GPS SIMRAD® GO9 (9")	GPS SIMRAD® NSS12 (12")
Sound System	BOSS® SOUND SYSTEM + 6 JBL® Marine Speakers + Amplifier	FUSION® SOUND SYSTEM + 6 Marine Speakers + Amplifier
Exterior Painting	1 Color (Hull)	2 Colors or More (Hull, Deck or HT)
Power Generator	KOHLER® 6KVA	KOHLER® 9KVA
A/C	12,000 BTU (Cabin)	16,000 + 6,000 BTU (CABIN - COCKPIT)
Power Charger 100A	✓	✓
VHF Radio w/ Antenna	✓	✓
Synthetic Teak or EVA Flooring	✓	✓
Anchor Windlass Electric System	✓	✓
Electric Trim Tabs (Flaps)	✓	✓
Fenders & Lines	✓	✓
USCG Boating Safety Kit	✓	✓
Shore Power + Shore Cord 50A	✓	✓
Macerator Pump and Holding Tank	✓	✓

Headlights w/ Remote (Cruising Spotlight)	✓	✓
Galvanic Isolator (Electrical Protection)	✓	✓
Cradle for Transport	✓	✓
Windshield Wipers	✓	✓
Heavy Duty Folding Table (Cockpit)	✓	✓
Hot Water System - Heater (Shower)	✓	✓
Induction Electric Stove (Cabin)	✓	✓
Electric Opening Sunroof	✓	✓
LED 24" TV Set and Mounting		✓
Isotherm® 65L Fridge 12V		✓
Design Items Set (Pillows, Beddings, Cushions, Towels, Accessories)		✓
Italian Steering Wheel		✓
Teak Table On Stern (Platform Extra Table)		✓
Bar Stools/chairs On Stern (Kit Of 2 Banquets)		✓
Mosaic / Glass Cover (Kitchen Wall)		✓
\$550,000		\$595,000



ADDITIONAL UPGRADES



Mercury®
Vessel View (7")
(Additional Screen)

\$3,950



Mercury®
Vessel View (9")
(Additional Screen)

\$4,500



MC² Quick Gyro X10
Stabilizers

\$46,500



Raymarine
Radar Quantum I

\$6,750



Raymarine
Radar Quantum II

\$7,250



GPS Raymarine®
Element 7s (7")
(Additional Screen)

\$2,250



GPS Raymarine®
AXIOM (9")
(Additional Screen)

\$4,950



GPS Raymarine®
AXIOM (12")
(Additional Screen)

\$7,950



GPS Garmin® MAP 923xsv
NMEA & Transducer (9")
(Additional Screen)

\$4,995



GPS Garmin® MAP 1242xsv
NMEA & Transducer (12")
(Additional Screen)

\$8,750



GPS SIMRAD®
Go7 (7")
(Additional Screen)

\$3,295



GPS SIMRAD®
Go9 (9")
(Additional Screen)

\$4,350



GPS SIMRAD®
NSS12 (12")
(Additional Screen)

\$6,950



Underwater Lights
(Pair)

\$1,500



Bow
Thrusters

\$14,000

ADDITIONAL UPGRADES



Manual Aft Shade
w/ 2 Poles

\$2,950



Manual Aft Shade
(Stobag)

\$3,200



Electric Aft Shade
(Stobag)

\$4,200



Bow Tent
(Bimini Top On Bow)

\$1,450



Eisenglass
Enclosure

\$3,900



RGB Changing Lights
(Cockpit)

\$2,750



Fusion® Marine Amplifier
(5 Channels) 1600W

\$1,595



Fusion® Marine
Speakers (Extra Pair)

\$895



JBL® Marine Amplifier
(Extra) (2 Channels)

\$1,395



JBL® Marine Speakers
(Extra Pair)

\$695



Set of Waterproof
Exterior Seat Covers

\$2,200



Complete Branded
Boat Nylon Cover

\$3,200



Bottom Paint
Anti-fouling Coppercoat Paint

\$10,950



Mid Ship Cabin Room
Enclosure (Wood)

\$3,750



Main Cabin Room
Enclosure (Wood)

\$4,995

ADDITIONAL UPGRADES



Glass Door Enclosure
For Cockpit

\$14,500



Electronic Opening
TV Set

\$3,950



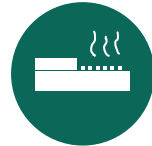
Waterproof Dashboard
Cover (Helm)

\$550



Fireboy® - Advanced Automatic
Anti-fire System

\$9,500



Kenyon Electric Grill
(Stern)

\$3,750



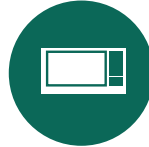
Refrigerated 12V
Drawer (Cockpit)

\$2,950



Ice Maker
(Cabin)

\$3,495



Microwave

\$750

PREMIUM UPGRADES

Got Essential but want more?
Upgrade to our **Premium** options.



Twin Mercury® Verado 400HP V10
Outboards w/ Joystick Piloting

\$9,500



A/C System 6,000 BTU
(Extra Unit - Cockpit)

4,245



A/C System 16,000 BTU
(Upgrade from 12,000 BTU - Cabin)

\$1,200



Kohler® 9KVA
Power Generator

\$6,950



GPS SIMRAD®
NSS12 (12")

\$2,600



Fusion® Marine Sound System Kit
+ 6 Speakers + Amplifier

\$2,594



External Double Painting
(2 Or More Colors, Hull, Deck Or HT)

\$2,500



Mosaic / Glass Cover
(Head Wall)

\$750



LED 24" TV Set
And Mounting

\$950



Leather Cover Panel
(Complete Dashboard & Helm)

\$2,950



Isotherm 65L
Fridge 12v

\$2,500



Italian Steering
Wheel

\$750



Teak Table On Stern
(Platform Extra Table)

\$850



Bar Stools/Chairs on Stern
(Kit Of 2 Banquets)

\$950



Design Items Set
(Pillows, Beddings, Cushions,
Towels, Accessories)

\$3,295

PREMIUM+ UPGRADES

Got **Premium** but want more?
Upgrade to our **Premium+** options.



Triple Mercury® Verado
300HP V8 Outboards
w/ Joystick Piloting

\$29,500



Triple Mercury® Verado
350HP V10 Outboards
w/ Joystick Piloting

\$59,950



Triple Mercury® Verado
400HP V10 Outboards
w/ Joystick Piloting

\$75,000



Twin Mercury® Verado
600HP V12 Outboards
w/ Joystick Piloting

\$85,000



Kohler® 11KVA
Power Generator

\$12,950



A/C System
9,000 BTU (Cockpit)

\$750



A/C System
12,000 BTU (Cockpit)

\$995



A/C System
16,000 BTU (Cockpit)

\$1,250



JL AUDIO KIT 1
Media Master,
6 Speakers, AMP

\$2,050



JL AUDIO KIT 2
Media Master, 8 Speakers,
Media Controller, AMP, SUB

\$6,950



External Complete Special Paint
And Or Color Selection

\$2,950



GPS SIMRAD®
NSO EVO3 (16")

\$4,950

HANOVER OWNERSHIP PROGRAM

At Hanover, we ensure an exciting stress-free experience from the moment you discover our brand.

STRESS-FREE PRICING

Our entire lineup comes at our lowest price - no haggling needed. Leave the negotiations to used car salesmen, and enjoy a straightforward buying experience with us.

FIRST TRIP

We've got you covered - you will get training and your first cruise comes with a captain by your side (up to 4 hours). Feel like a pro and make the most of your experience!

MAINTENANCE AND WARRANTY

Every Hanover vessel includes a 5-Year Premier Level Hull Warranty, 1 Year General, Mechanical and Components Warranty, All Accessories & Electrical Parts Under The Original Manufacturer's Warranty.

Sail with complete confidence knowing you have a team of dedicated professionals at your service.

Don't just own a boat, be part of the Hanover Lifestyle.

Hanover

Hanover

www.hanoveryachts.com